

APPENDIX G

PRE-2002 GROUNDWATER LEVEL
CONTOUR MAPS

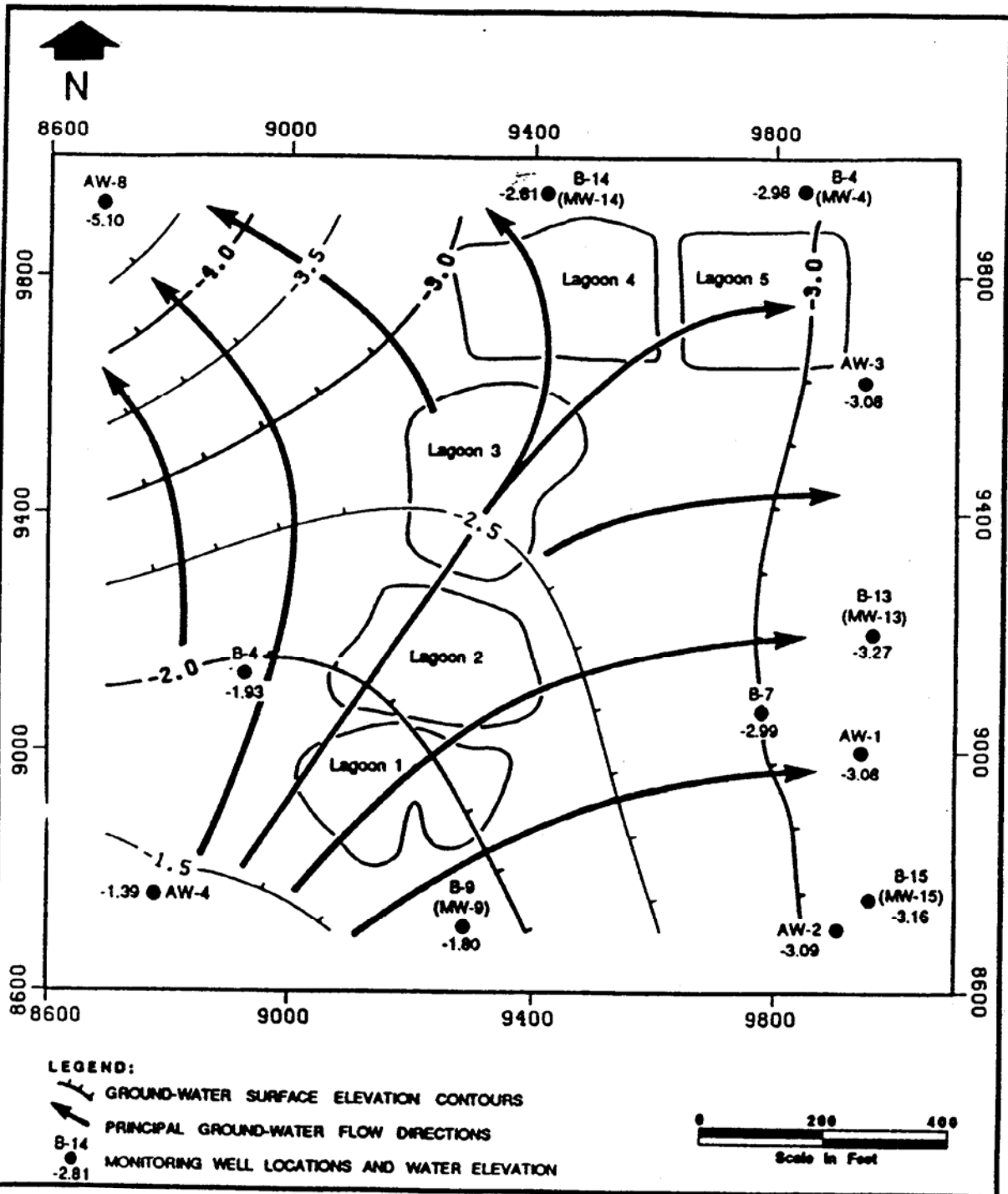
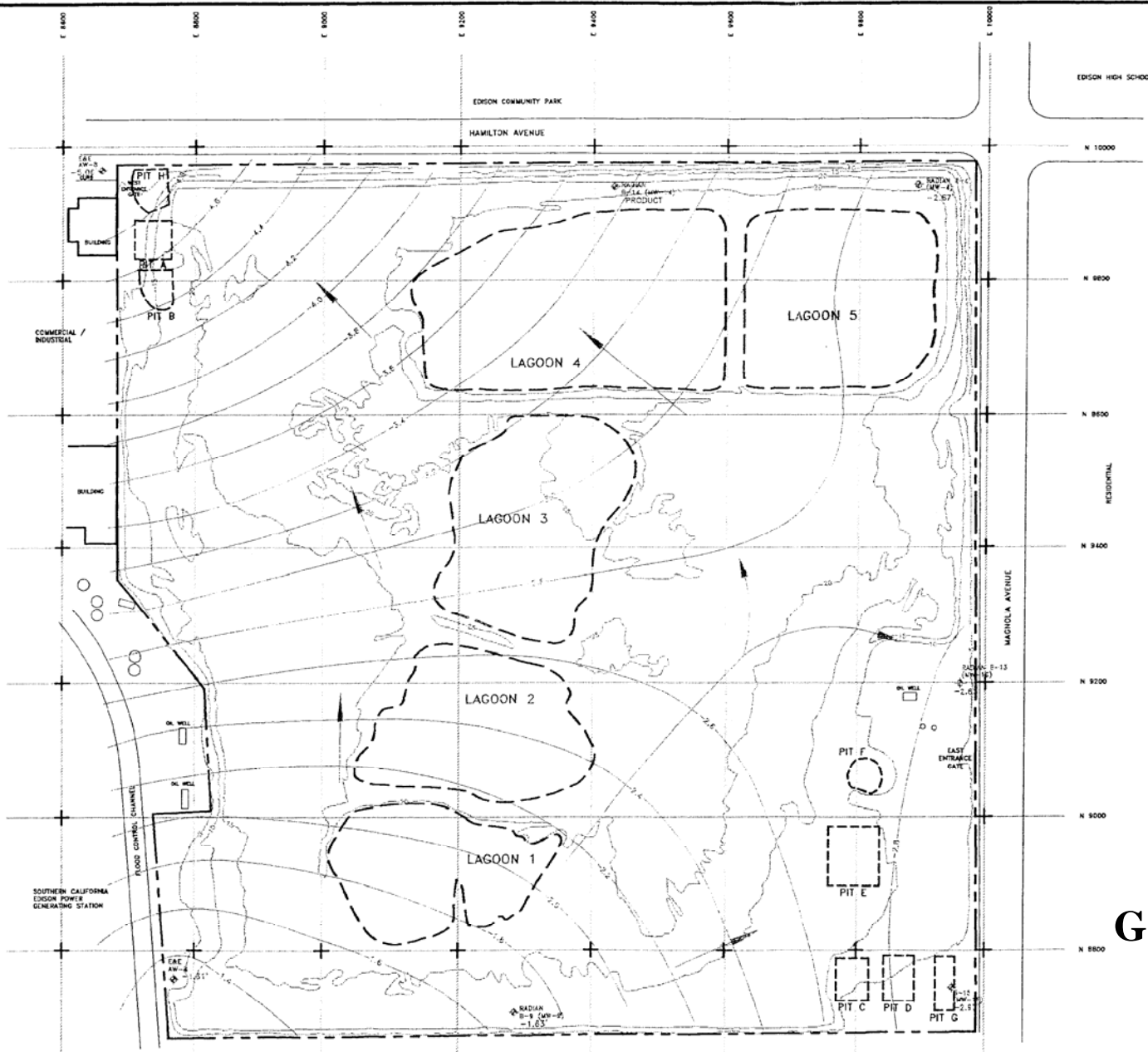


Figure G-1 Ground-water Surface and Flow Directions at the Ascon Landfill Site.
 (September 22, 1988, Elevations Measured from Mean Sea Level.)



EXPLANATION

- PROPERTY BOUNDARY
- 20- TOPOGRAPHIC CONTOUR (ELEVATION IN FEET ABOVE MEAN SEA LEVEL)
- 2.0' GROUNDWATER MONITORING WELL AND ELEVATION OF GROUNDWATER SURFACE ABOVE MEAN SEA LEVEL
- ONLY WELLS GAUGED ON JANUARY 15, 1996 ARE SHOWN ON MAP
- 2.0- LINE OF EQUAL GROUNDWATER ELEVATION
- DIRECTION OF GROUNDWATER FLOW
- E&E - E&E - ECOLOGY & ENVIRONMENT - 1983
- RADIAN - RADIAN CORPORATION - 1988
- - - ESTIMATED BOUNDARY OF WASTE LAGOON
- - - ESTIMATED BOUNDARY OF WASTE PIT
- N9000/E9000 LOCAL SURVEY REFERENCE GRID

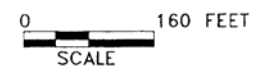
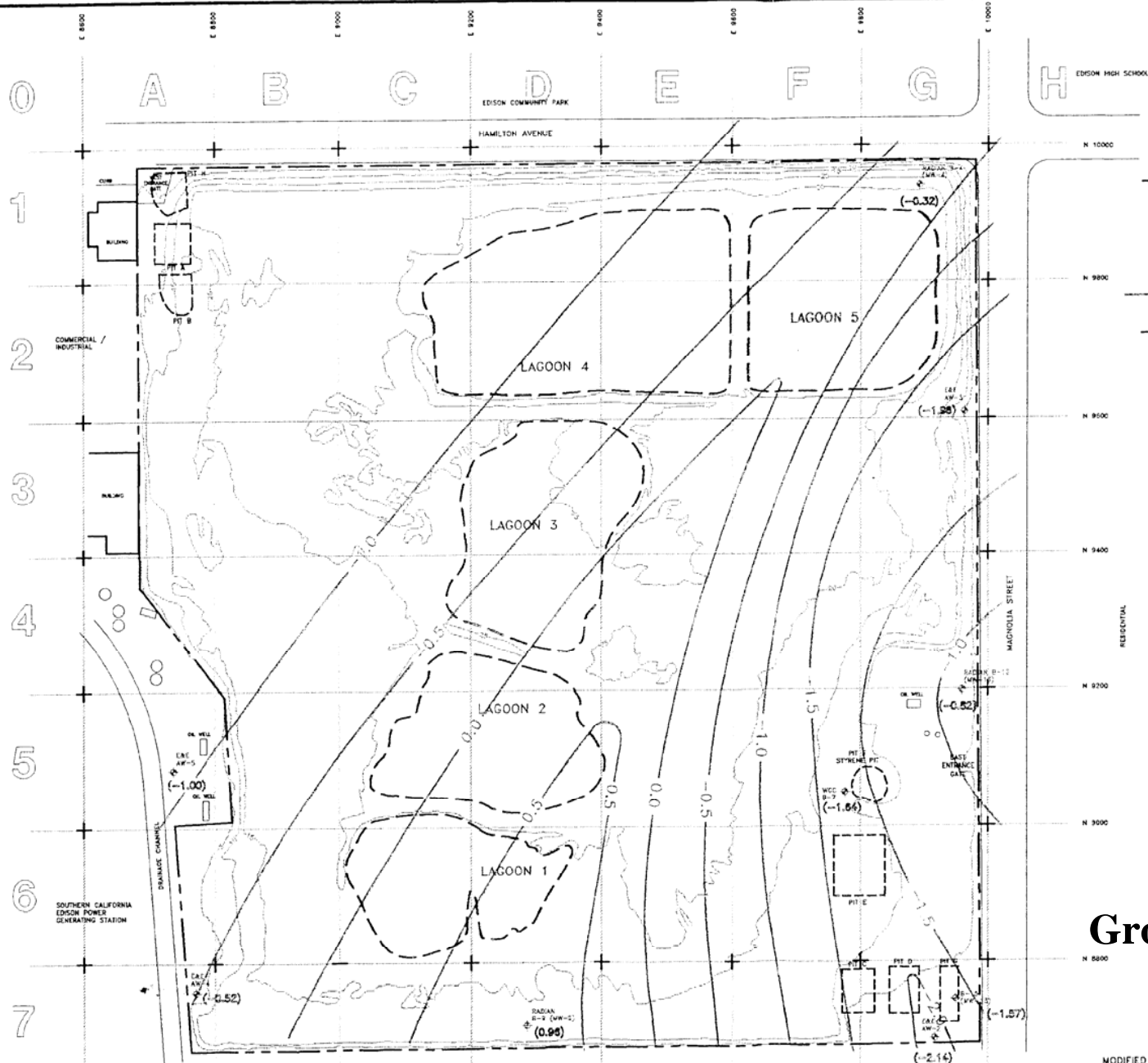


Figure G-2
Groundwater Elevation Map
January 15, 1996

Source: 1997 Remedial Investigation Report, ESE.

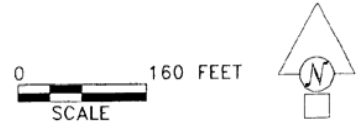


EXPLANATION

- PROPERTY BOUNDARY
- TOPOGRAPHIC CONTOUR (ELEVATION IN FEET ABOVE MEAN SEA LEVEL)
- GROUNDWATER MONITORING WELL
- ELEVATION OF GROUNDWATER SURFACE IN FEET RELATIVE TO MEAN SEA LEVEL (MSL)
- LINE OF APPROXIMATELY EQUAL ELEVATION OF WATER SURFACE IN FEET RELATIVE TO MSL
- ESTIMATED BOUNDARY OF WASTE LAGOON
- ESTIMATED BOUNDARY OF WASTE PIT
- LOCAL SURVEY REFERENCE GRID
- GRID REFERENCE

PREVIOUS STUDIES

- PSI - PSI ENGINEERING - 1966
- SMITH-EMERY - 1979
- DOHE - DEPARTMENT OF HEALTH SERVICES - 1980, 81
- DEWAL - SANJOSE OFFSHORE PLANTS ENVIRONMENTAL MANAGEMENT AGENCY - 1980
- WCC - WOODWARD CLIFTON CONSULTANTS - 1983
- E&E - ECOLOGY & ENVIRONMENT - 1983
- PSR - ALL 1983 INVESTIGATION - 1983
- JWB - J.W. BARRINGTON / TRUESDAL LABORATORIES - 1985
- MSL - MSL LABORATORIES - 1985
- RADIAN - RADIAN CORPORATION - 1986
- SI - SICO INDUSTRIES/ITARA ENGINEERS, 1992, 1997
- ESE - ENVIRONMENTAL SCIENCE AND ENGINEERING, INC. 1996
- ESE97 - ENVIRONMENTAL SCIENCE AND ENGINEERING, INC. 1997



**Figure G-3
Groundwater Elevation Map
March 12, 1997**

MODIFIED FROM RADIAN, 1988

Source: 1997 Remedial Investigation Report, ESE.