

# Ascon Huntington Beach Groundwater Monitoring

January 2020

A safer, cleaner future for the community

**In coordination with the community, the Ascon Landfill Site is undergoing a comprehensive cleanup effort.** As part of this project, the Ascon team is working to protect the health and safety of the community, including monitoring the groundwater at the Site. All work is conducted under the oversight of the California Department of Toxic Substances Control (DTSC).

## Groundwater background

During the oil boom in Huntington Beach, the Ascon Site, a permitted landfill, received drilling waste from oil production and industrial waste from 1938 to 1971, and from the disposal of construction debris from 1971 to 1984. Groundwater at the Ascon property has been monitored as far back as 1982, when the landfill was still operational. Monitoring during the temporary shutdown is conducted by collecting groundwater samples from wells located offsite in the surrounding neighborhood. Sampling and investigations conducted since 2002 found that impacts to shallow groundwater are contained within the Site boundaries. All drinking water production wells in Huntington Beach are at least three miles from the Site. Long-term groundwater monitoring for the community will continue after the cleanup, using both existing offsite monitoring wells and new replacement onsite wells.

## Monitoring during and after remediation



\* Map is for illustrative purposes only. Boundaries and locations shown are approximate.

The groundwater monitoring plan approved by DTSC for the property includes the following actions:

### OFFSITE MONITORING WELLS

- **Five offsite wells** are monitored during cleanup activities (four will continue to be monitored once the cleanup is complete).

### ONSITE MONITORING WELLS

- **Onsite wells have been removed** to accommodate soil cleanup and installation of the environmental cap.
- **Four new replacement onsite wells** will be installed for long-term monitoring once the cleanup is complete.

**Site boundary**    **Offsite well**    **Onsite well post-remediation**  
 **Groundwater flow** in north-northwest direction

## Validating sampling results



Semi-annual groundwater monitoring samples are collected and sent to state-certified labs.



The labs' analyses are validated with strict quality control and quality assurance methods.



All groundwater monitoring results are provided to DTSC and posted on EnviroStor.com.

## Subsurface conditions help protect groundwater

### Conditions at the Site help to limit impacts to groundwater:

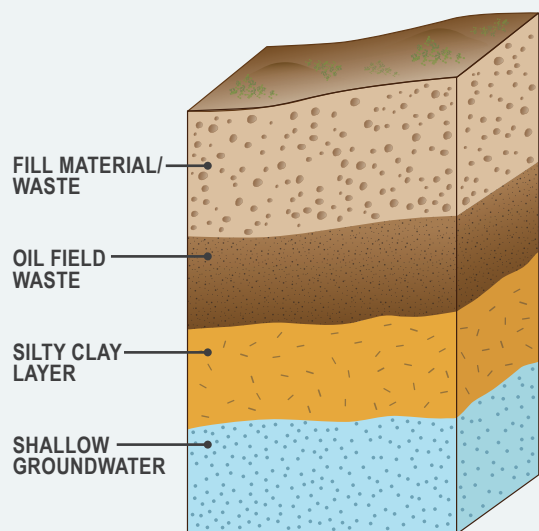
- A silty clay layer has acted as a geological barrier separating landfill materials deposited on the surface from groundwater.
- Groundwater flows slowly (approximately 10 feet per year under most areas of the Site).

### Note on water

**Groundwater** is the water found underground in the cracks and spaces in soil, sand and rock.

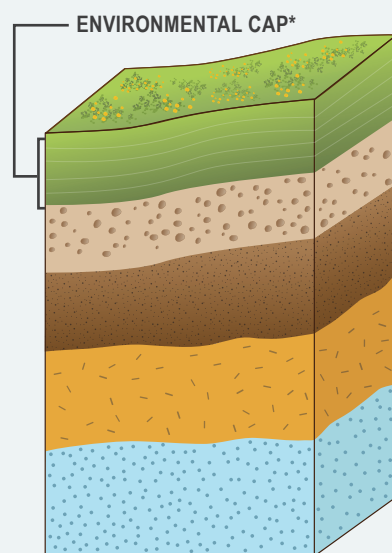
**Stormwater** is the surface water runoff from heavy rain.

#### Simplified cross-section of the Ascon Site during remediation



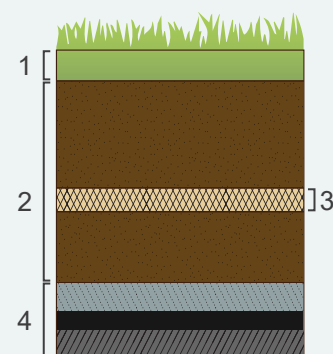
*Schematic depiction is for illustrative purposes only.*

#### After remediation



*\*Environmental cap prevents stormwater from reaching groundwater under the Site.*

#### Environmental cap



#### KEY:

1. VEGETATION
2. CLEAN SOIL COVER
3. PLASTIC NETTING TO PROTECT AGAINST WILDLIFE DIGGING/BURROWING
4. MULTI-LAYERED LOW PERMEABILITY GEOMEMBRANE AND GEOFABRIC



## Frequently asked questions

**Does the Ascon Site impact my drinking water?** No, the Ascon Site has no impact on drinking water. All impacts to groundwater are contained within the Site. Additionally, due to seawater intrusion, there are no drinking water production wells within three miles of the Site. Any drinking water wells are under the jurisdiction of the Orange County Health Officer.

**Could fruits and vegetables grown in my backyard be impacted by groundwater at the Ascon Site?** No. Groundwater testing at the Ascon Site as far back as 1982 has shown impacts to groundwater are limited and are contained within, and not leaving, the Site boundaries.

**What are you monitoring for in groundwater?** Groundwater monitoring tests for impacts typically found at the Site, including volatile organic compounds (VOCs), semivolatile organic compounds (SVOCs) and metals. The results of monitoring are posted by DTSC on EnviroStor.com.

## Want more information? Questions? Concerns?

To learn more about the Ascon cleanup, and to sign up for our weekly project update email newsletter, visit our website at [Asconhb.com](http://Asconhb.com) or call the Ascon Community Information Line at (714) 388-1825.