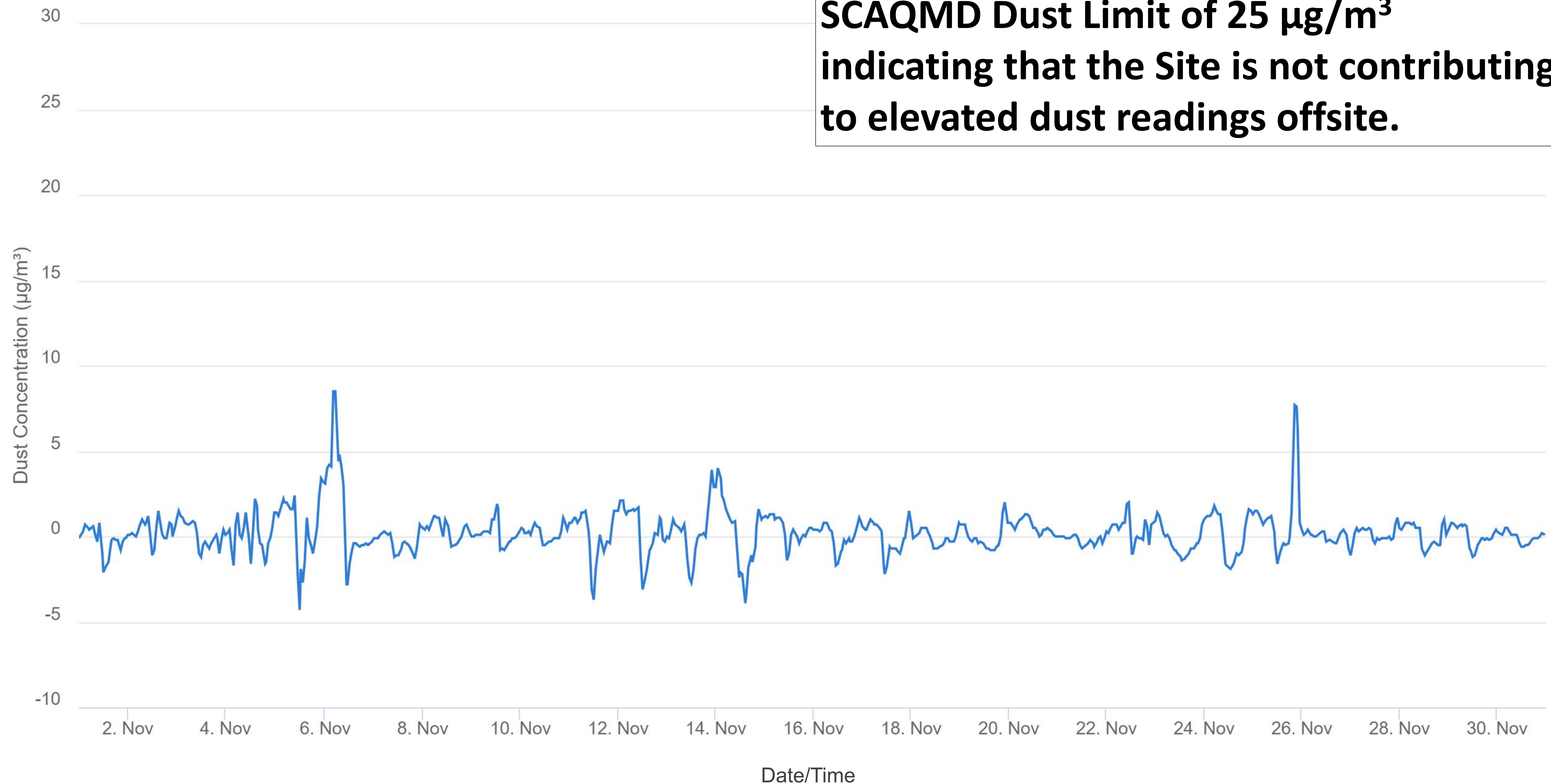


Onsite Dust Monitoring

11/1/2023 – 11/30/2023

Net Dust (All Downwind Stations)

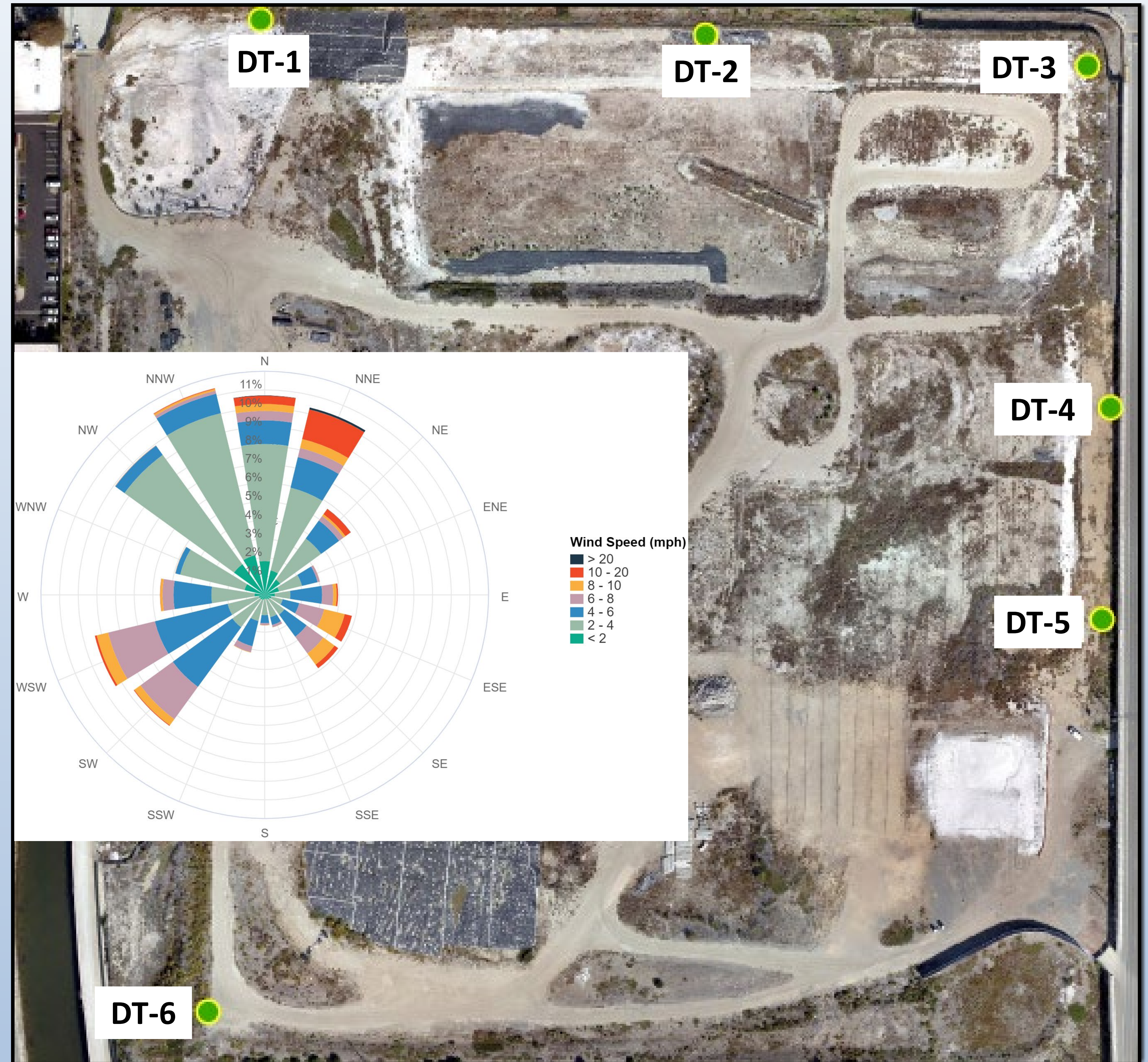
Net dust readings are not above the SCAQMD Dust Limit of $25 \mu\text{g}/\text{m}^3$ indicating that the Site is not contributing to elevated dust readings offsite.



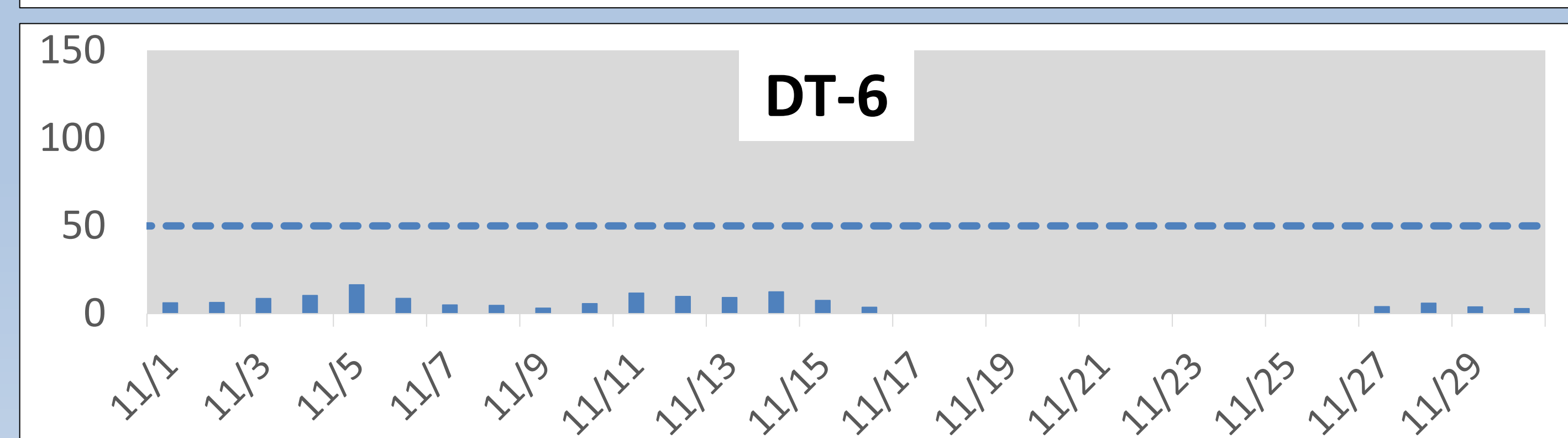
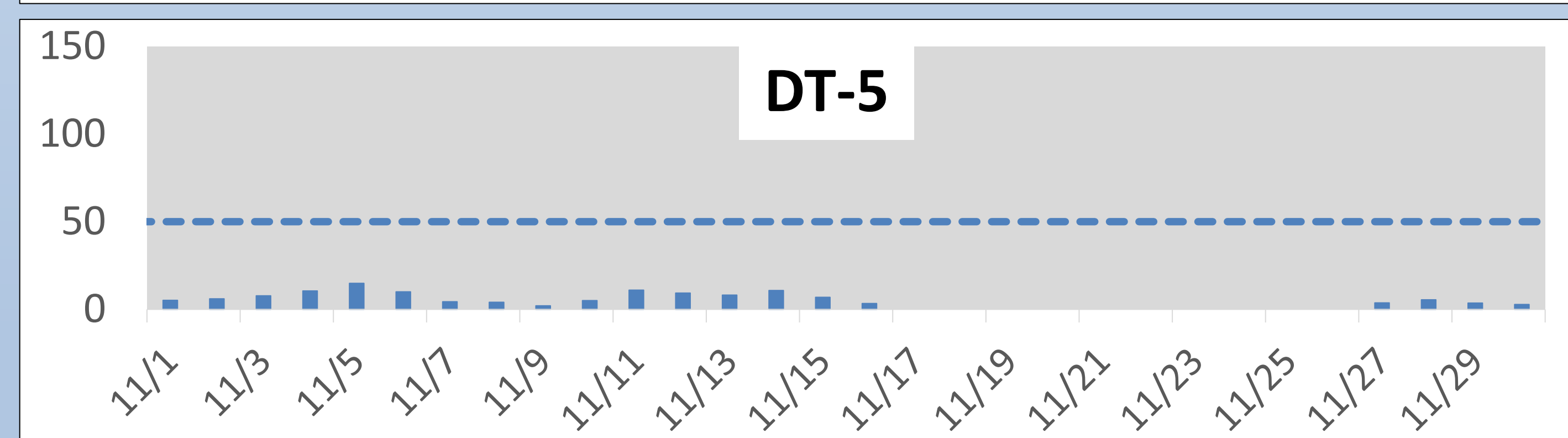
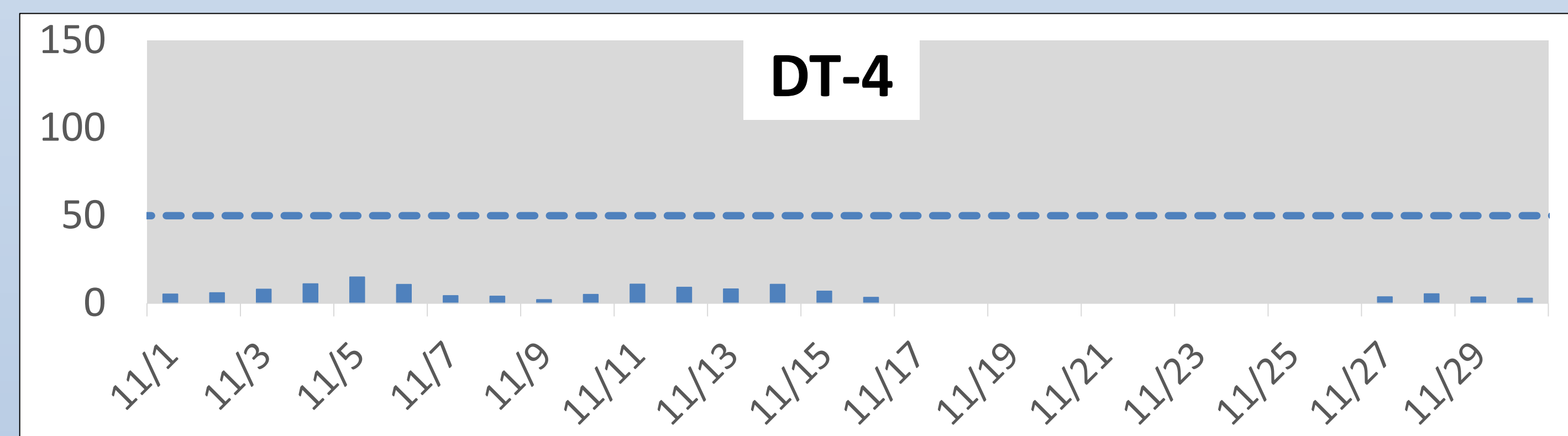
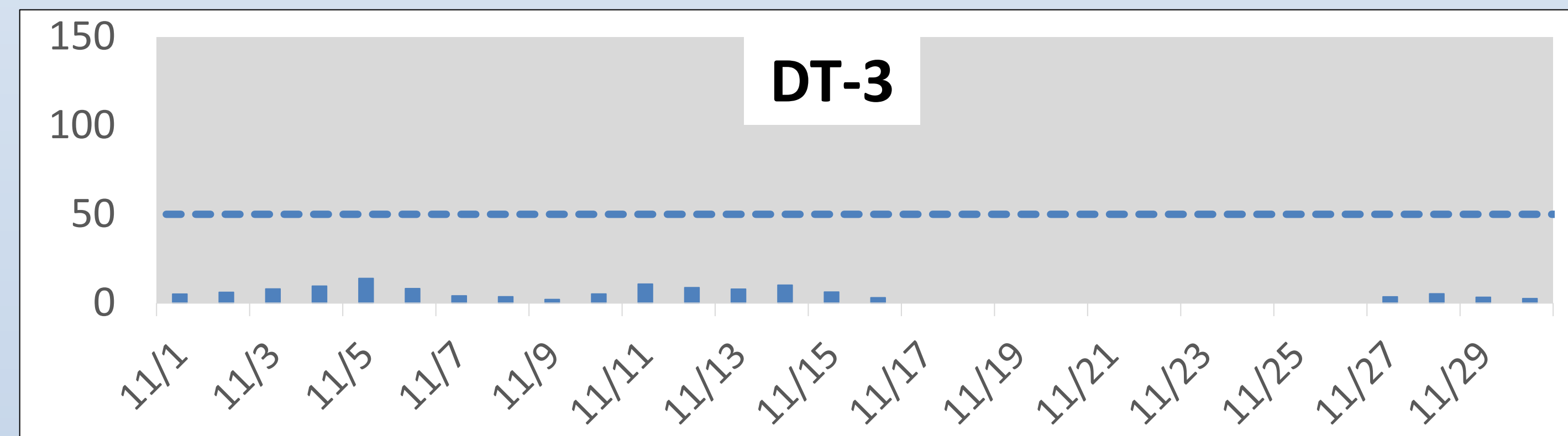
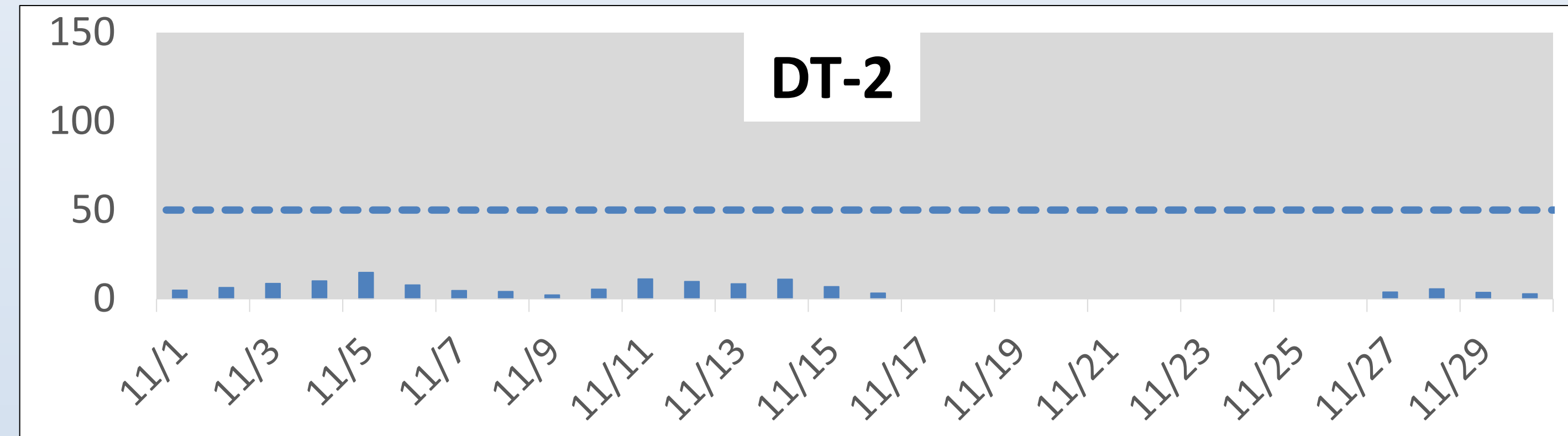
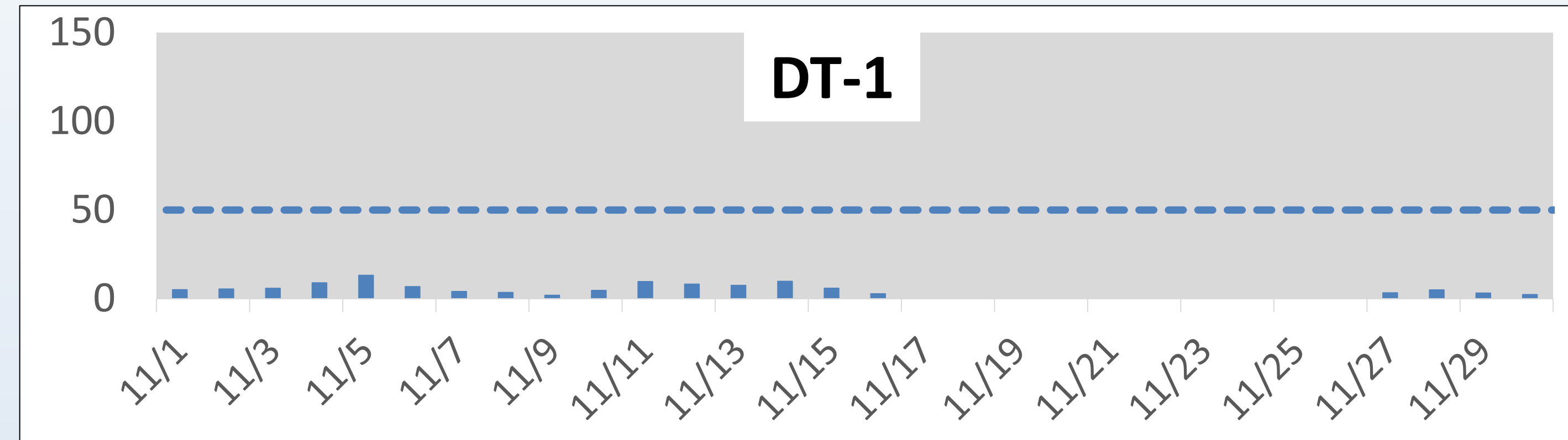
Net dust represents the dust that may be leaving the Site. This is determined by subtracting upwind data (dust blowing onto the Site from other sources) from downwind data. This helps us monitor that dust control actions are effective.

Onsite Dust Monitoring

Total dust readings including upwind dust contribution Monthly – 11/1/2023 – 11/30/2023

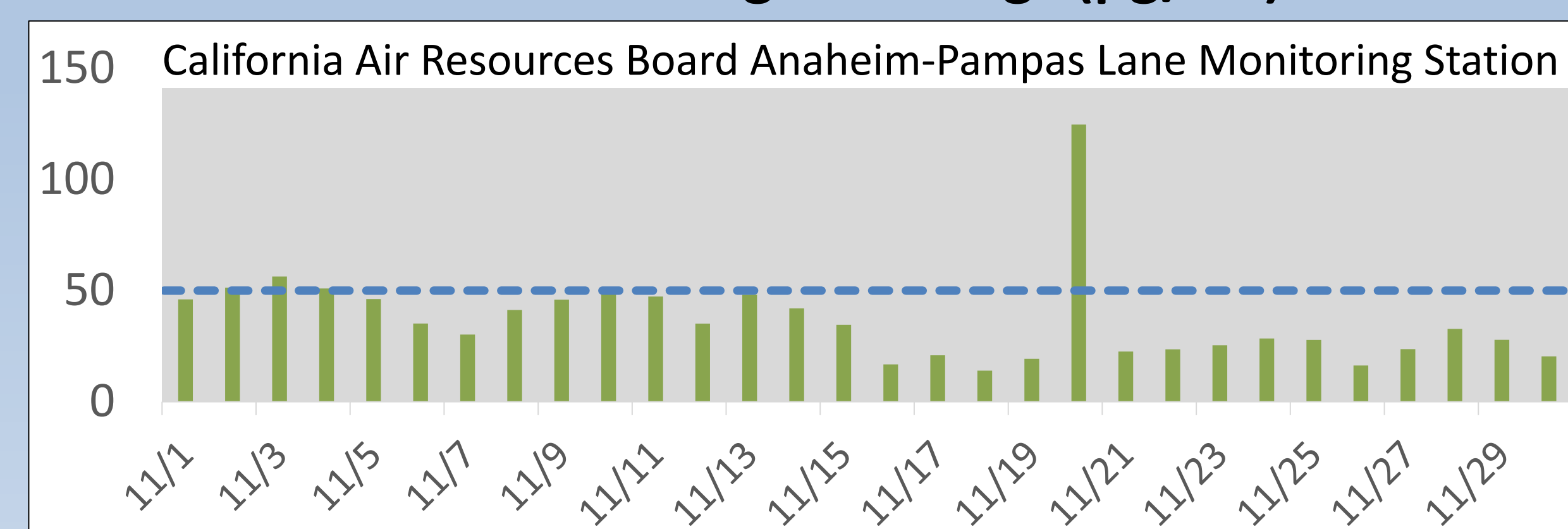


**Individual Onsite Stations:
24-Hr Average Dust Readings ($\mu\text{g}/\text{m}^3$)**



Notes: California Ambient Air Quality Standard for PM₁₀ averaged over 24 hours is 50 $\mu\text{g}/\text{m}^3$. National Ambient Air Quality Standard for PM₁₀ averaged over 24 hours is 150 $\mu\text{g}/\text{m}^3$.

**South Coast Basin Regional PM₁₀:
24-Hr Average Readings ($\mu\text{g}/\text{m}^3$)**



Closest regional station provided for comparison to regional trends

24-hour average concentrations were below air quality standards. Winds were variable this month, blowing primarily from the north/northwest and stronger winds >20 mph. No data was recorded over the Thanksgiving Holiday (November 17-26).