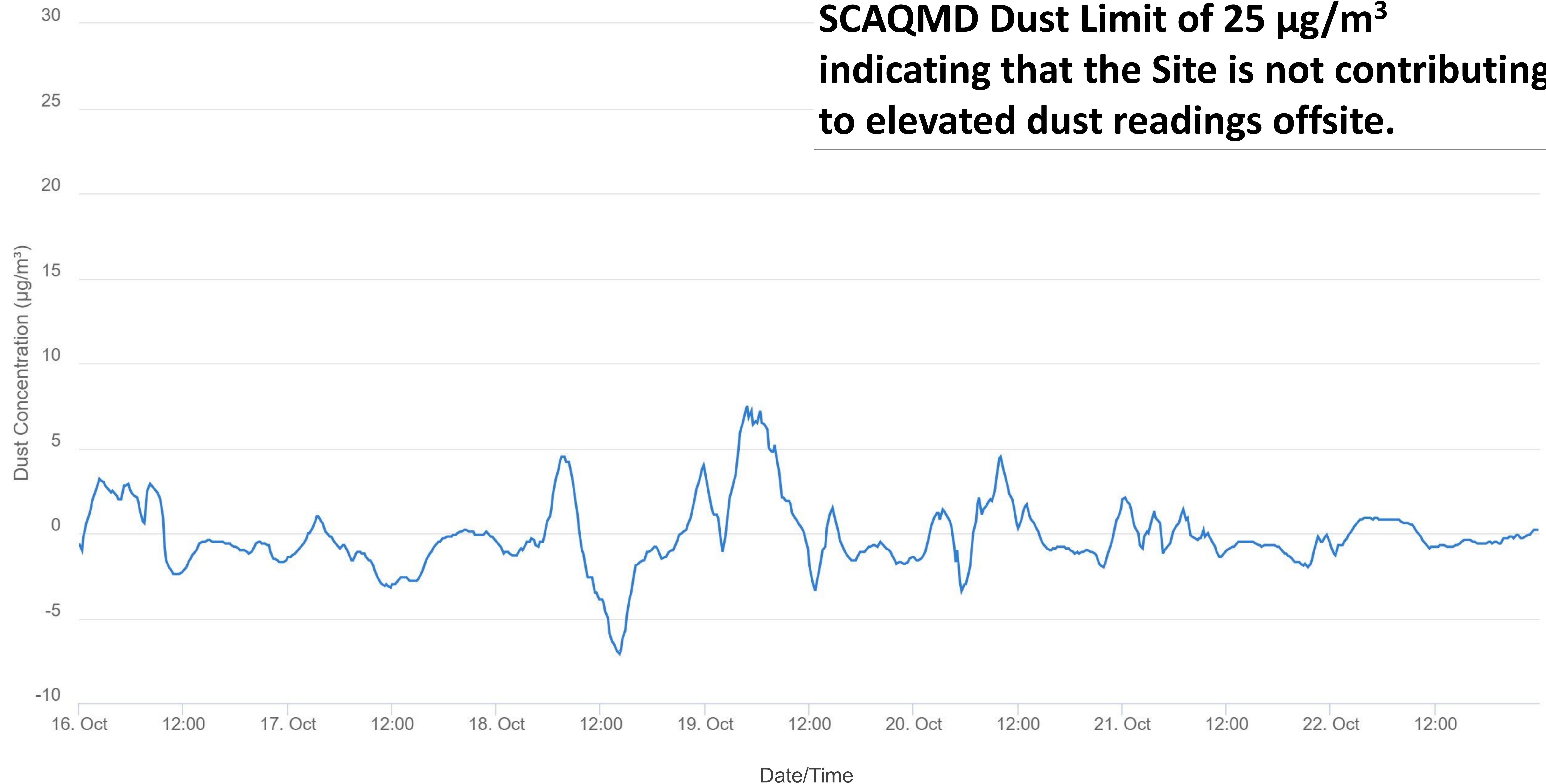


Onsite Dust Monitoring

10/16/2023 – 10/22/2023

Net Dust (All Downwind Stations)

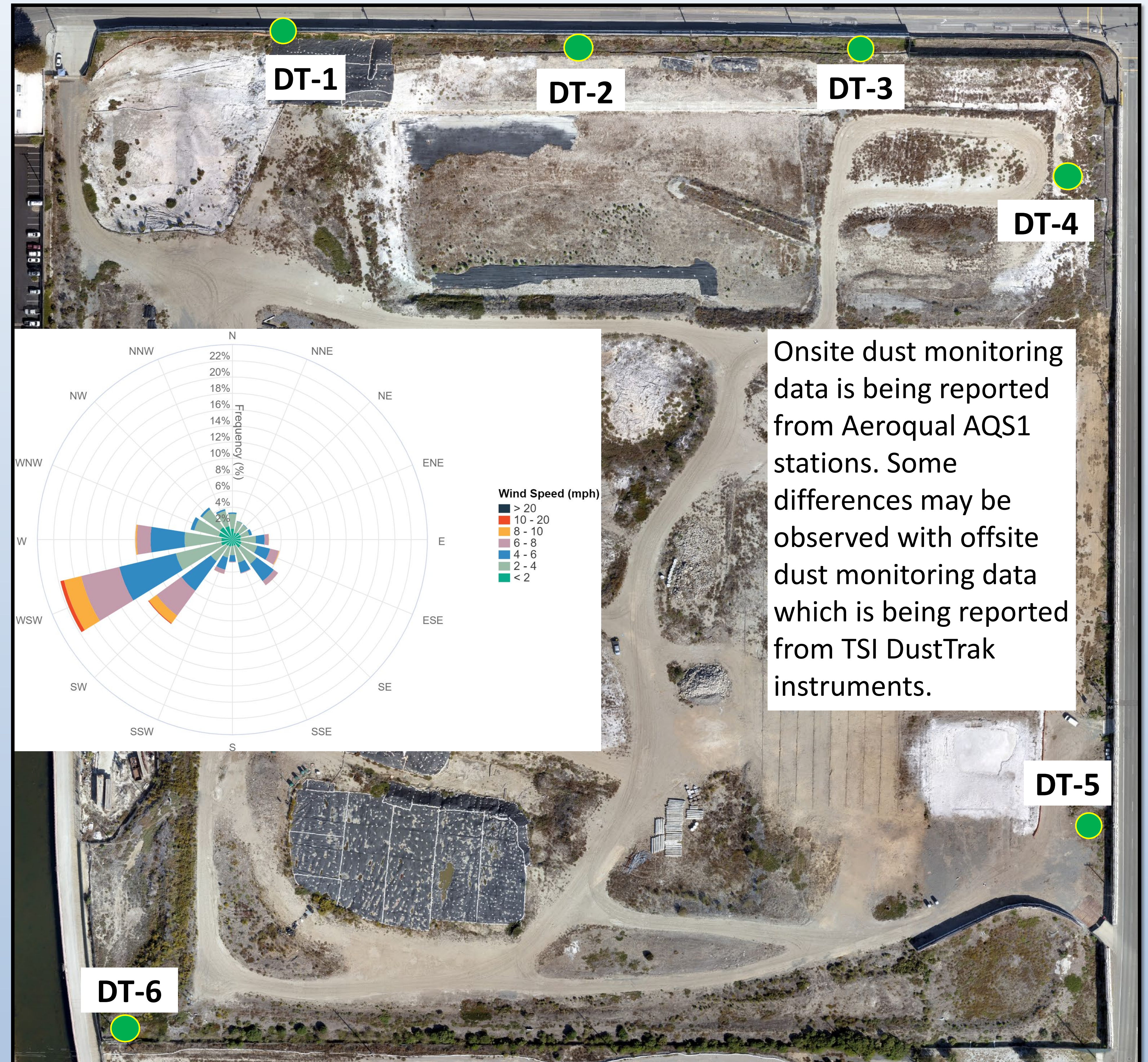
Net dust readings are not above the SCAQMD Dust Limit of $25 \mu\text{g}/\text{m}^3$ indicating that the Site is not contributing to elevated dust readings offsite.



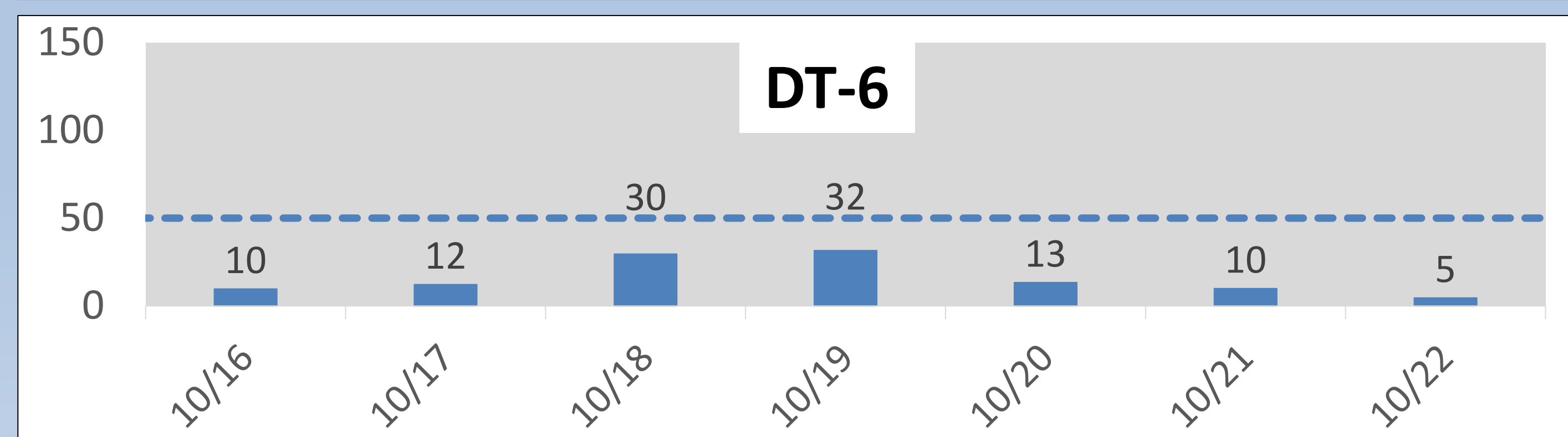
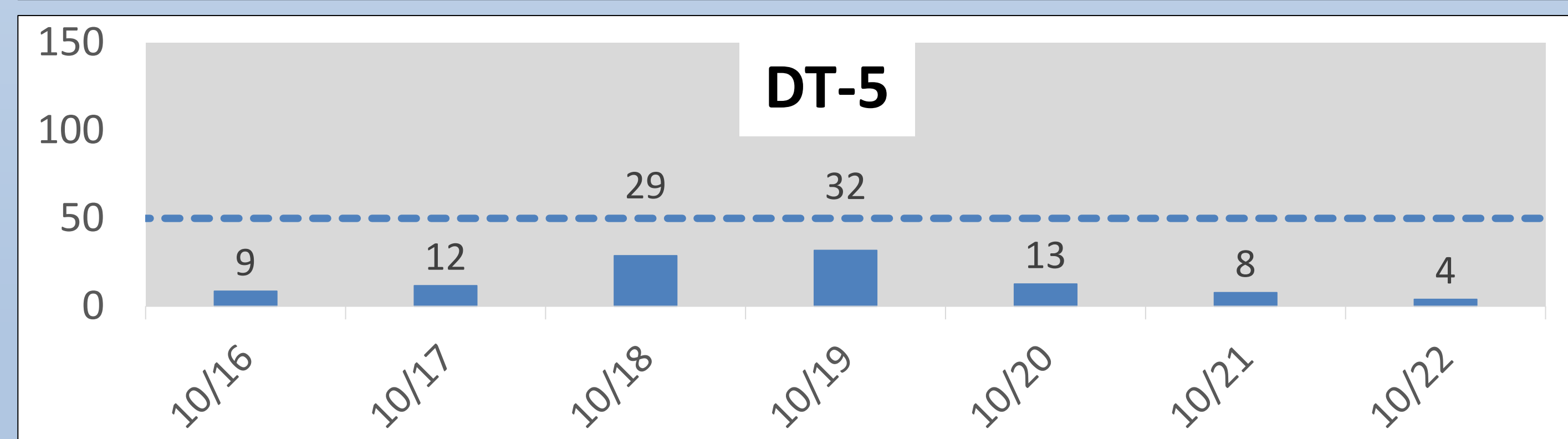
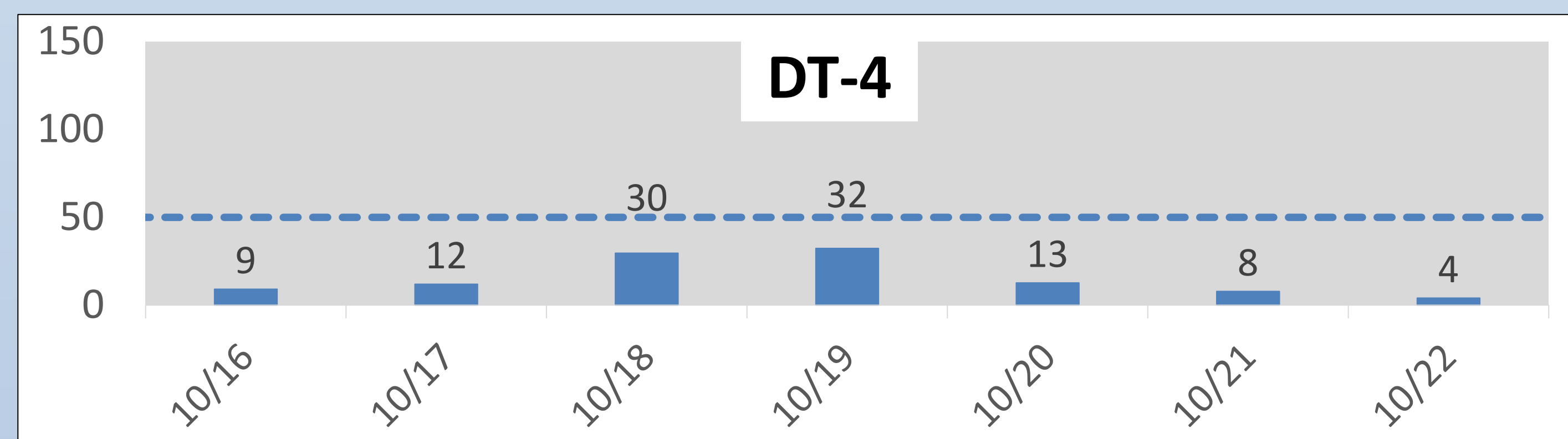
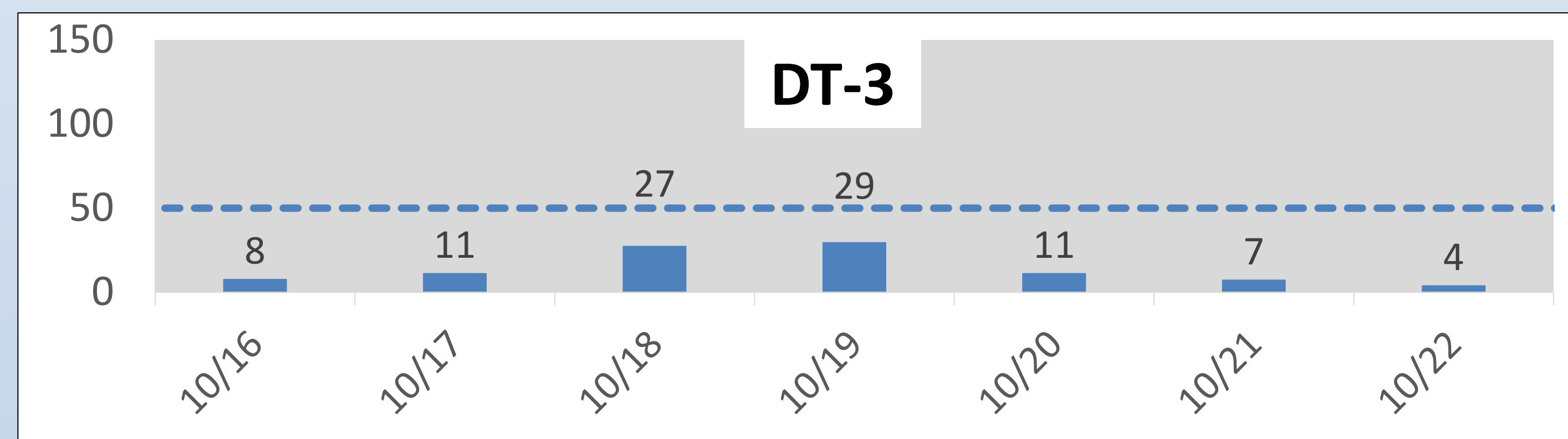
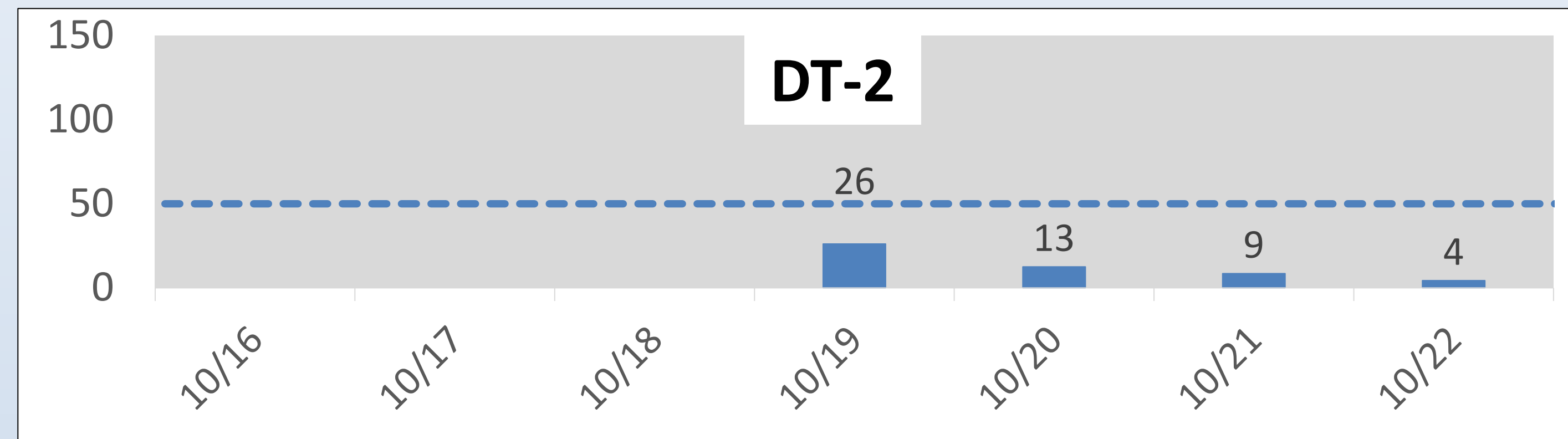
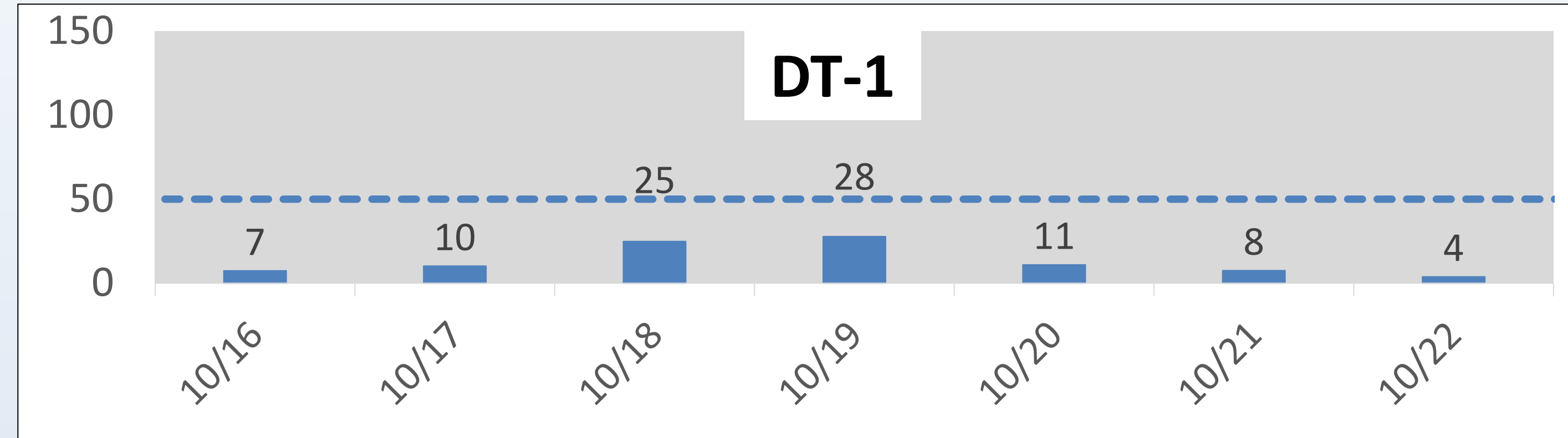
Net dust represents the dust that may be leaving the Site. This is determined by subtracting upwind data (dust blowing onto the Site from other sources) from downwind data. This helps us monitor that dust control actions are effective.

Onsite Dust Monitoring

Total dust readings including upwind dust contribution Weekly – 10/16/2023 – 10/22/2023

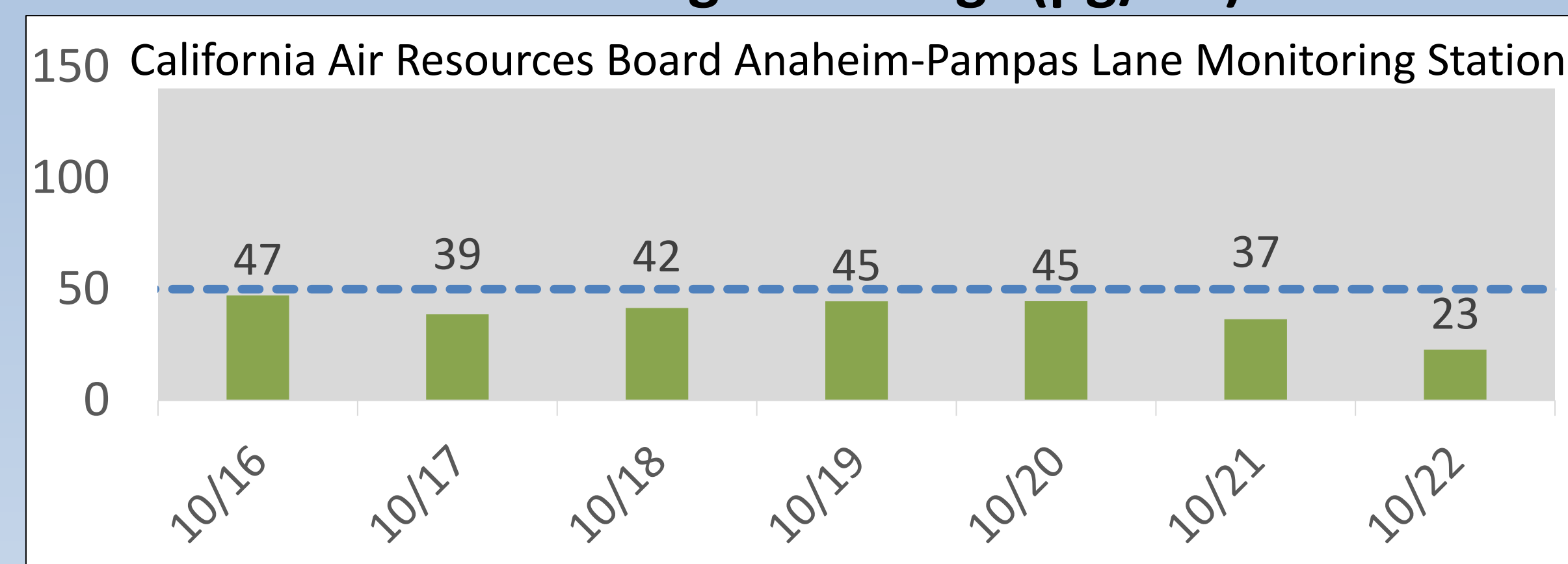


**Individual Onsite Stations:
24-Hr Average Dust Readings ($\mu\text{g}/\text{m}^3$)**



Notes: California Ambient Air Quality Standard for PM10 averaged over 24 hours is $50 \mu\text{g}/\text{m}^3$. National Ambient Air Quality Standard for PM10 averaged over 24 hours is $150 \mu\text{g}/\text{m}^3$.

**South Coast Basin Regional PM10:
24-Hr Average Readings ($\mu\text{g}/\text{m}^3$)**



Closest regional station provided for comparison to regional trends

24-hour average concentrations were below air quality standards. Winds were blowing primarily from the west/southwest, with stronger winds in the 10-20 mph range. DT-2 was offline from Oct. 16-18. DTSC approved an offsite air monitoring pause until restart work.