



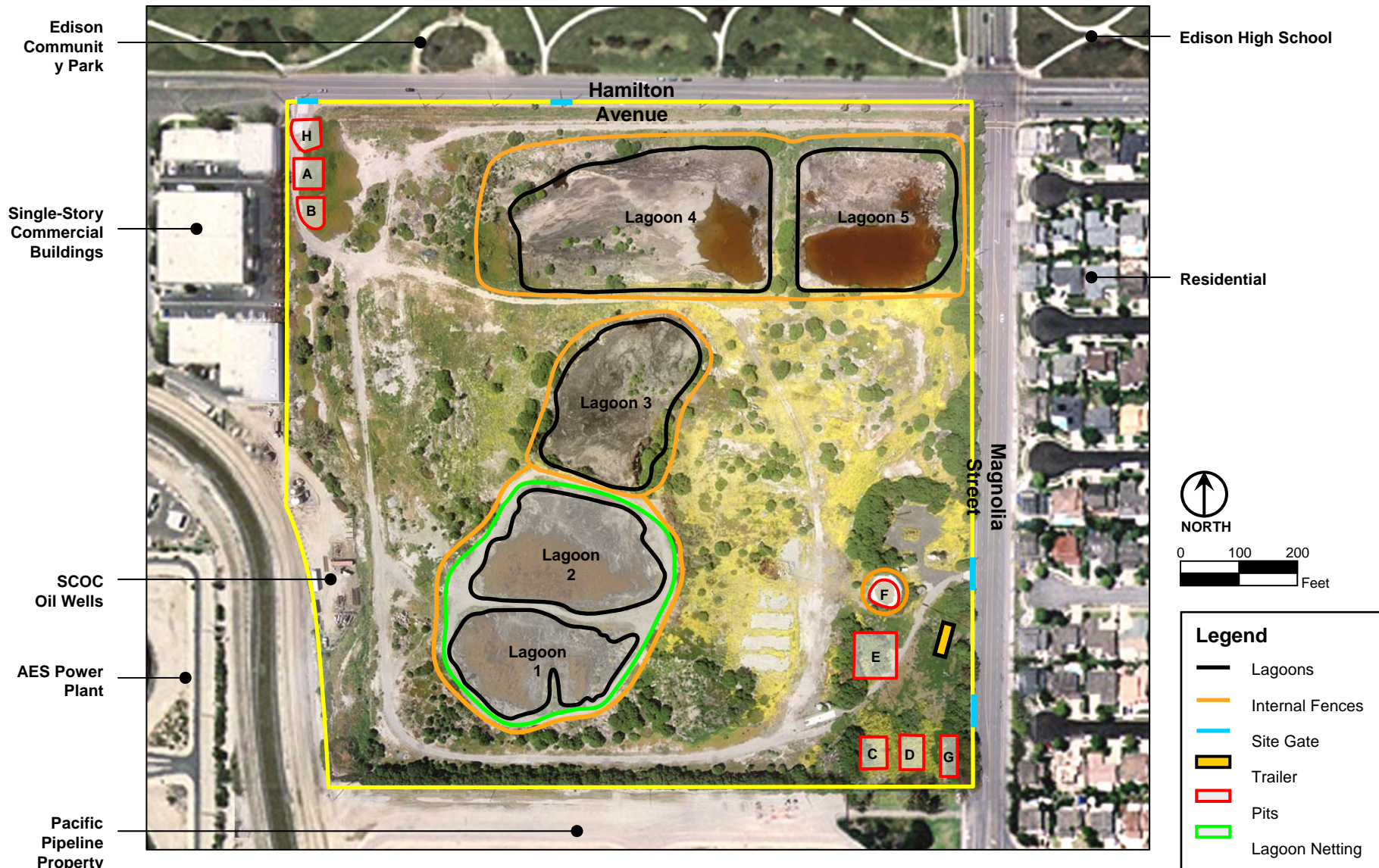
Site Location Map

Figure 1-1



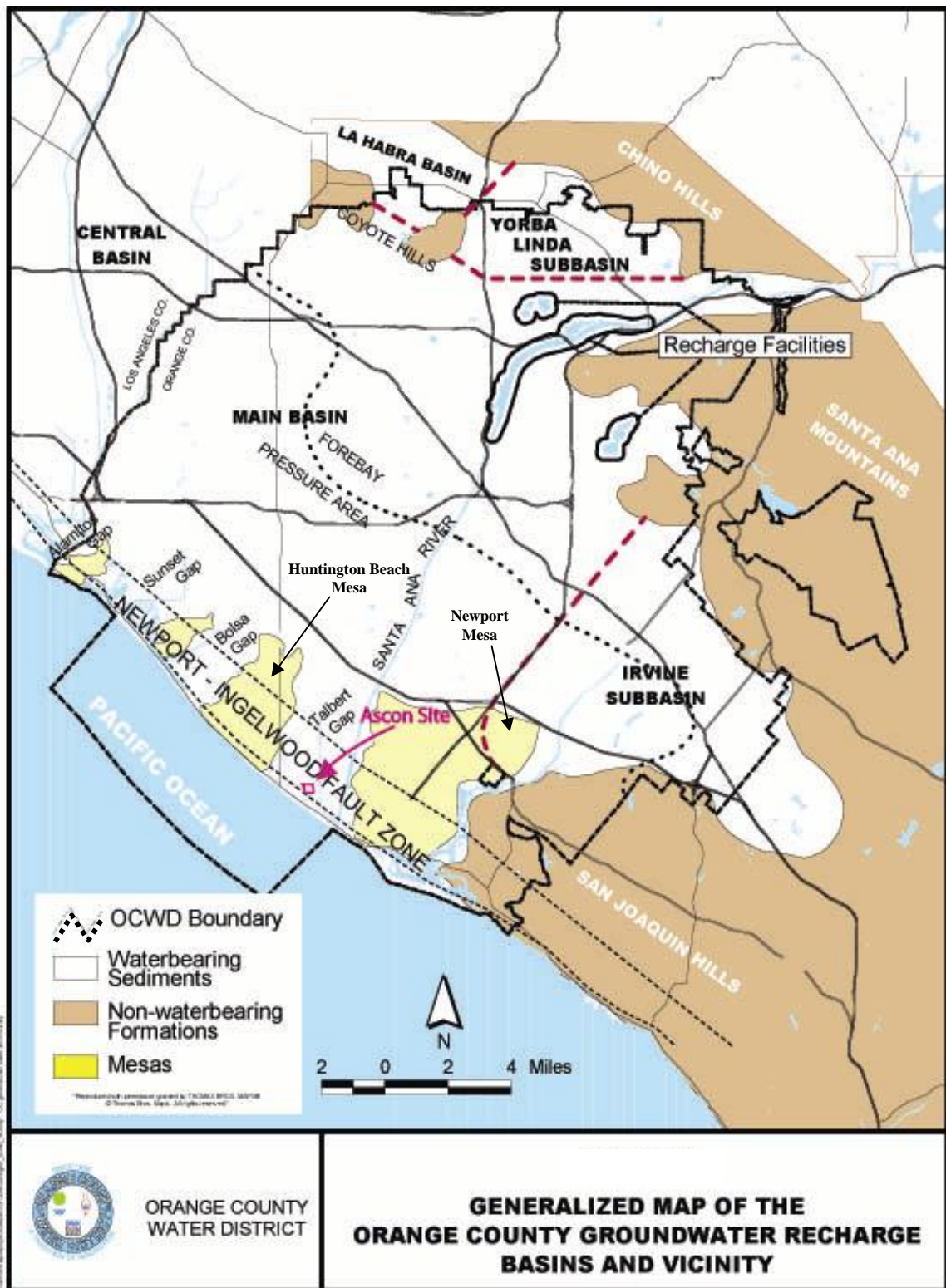
Site Location Map and Surrounding Land Use

Figure 2-1



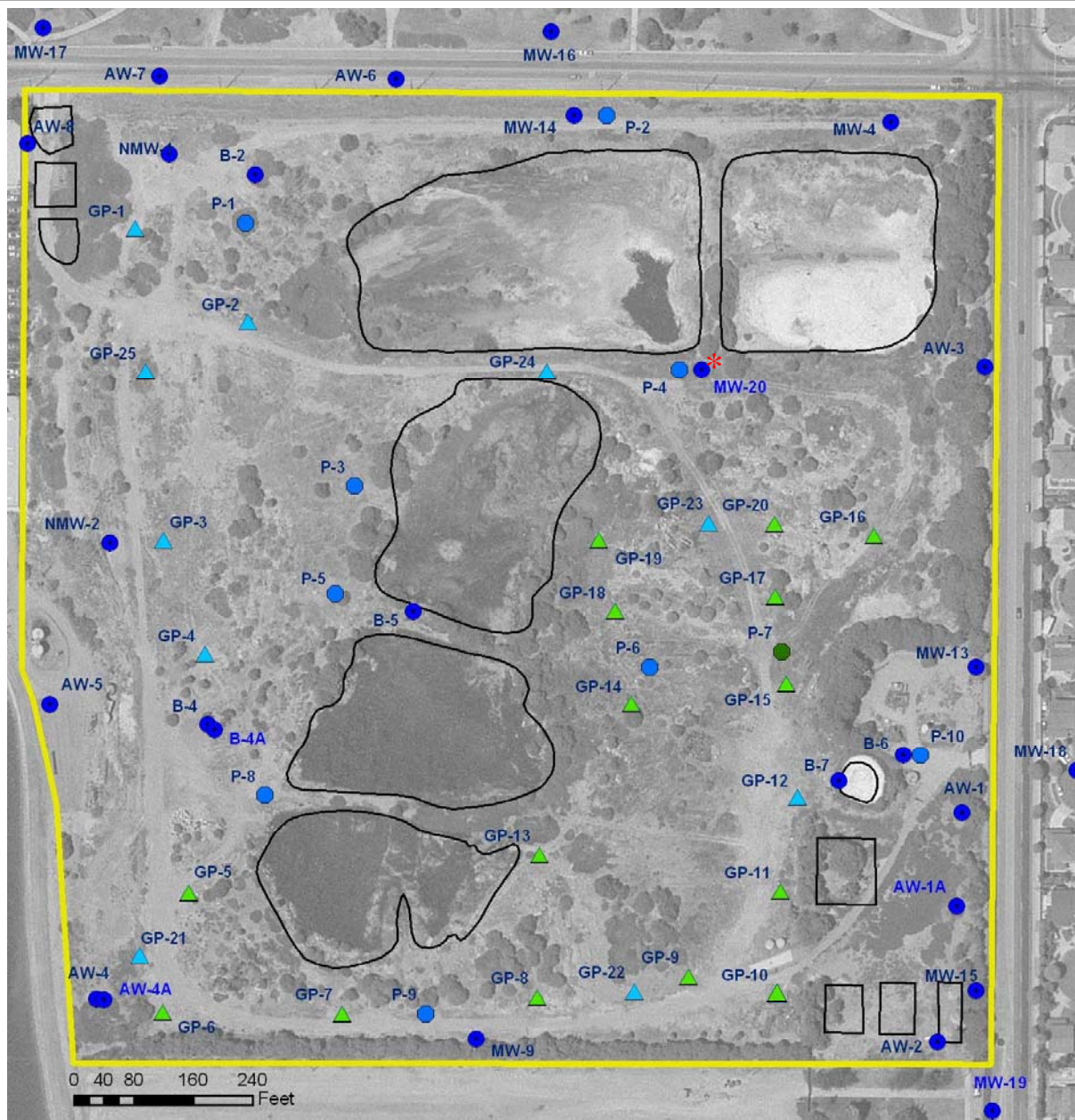
Site Features Map

Figure 2-2



Generalized Map of the Orange County Groundwater Basin and Vicinity

Figure 3-1



Legend

- Monitoring Well in SPA
- Piezometer in SPA
- ▲ Geoprobe Well in SPA
- Piezometer in Perched Zone
- ▲ Geoprobe Well in Perched Zone
- Ascon Site Boundary
- Pit or Lagoon

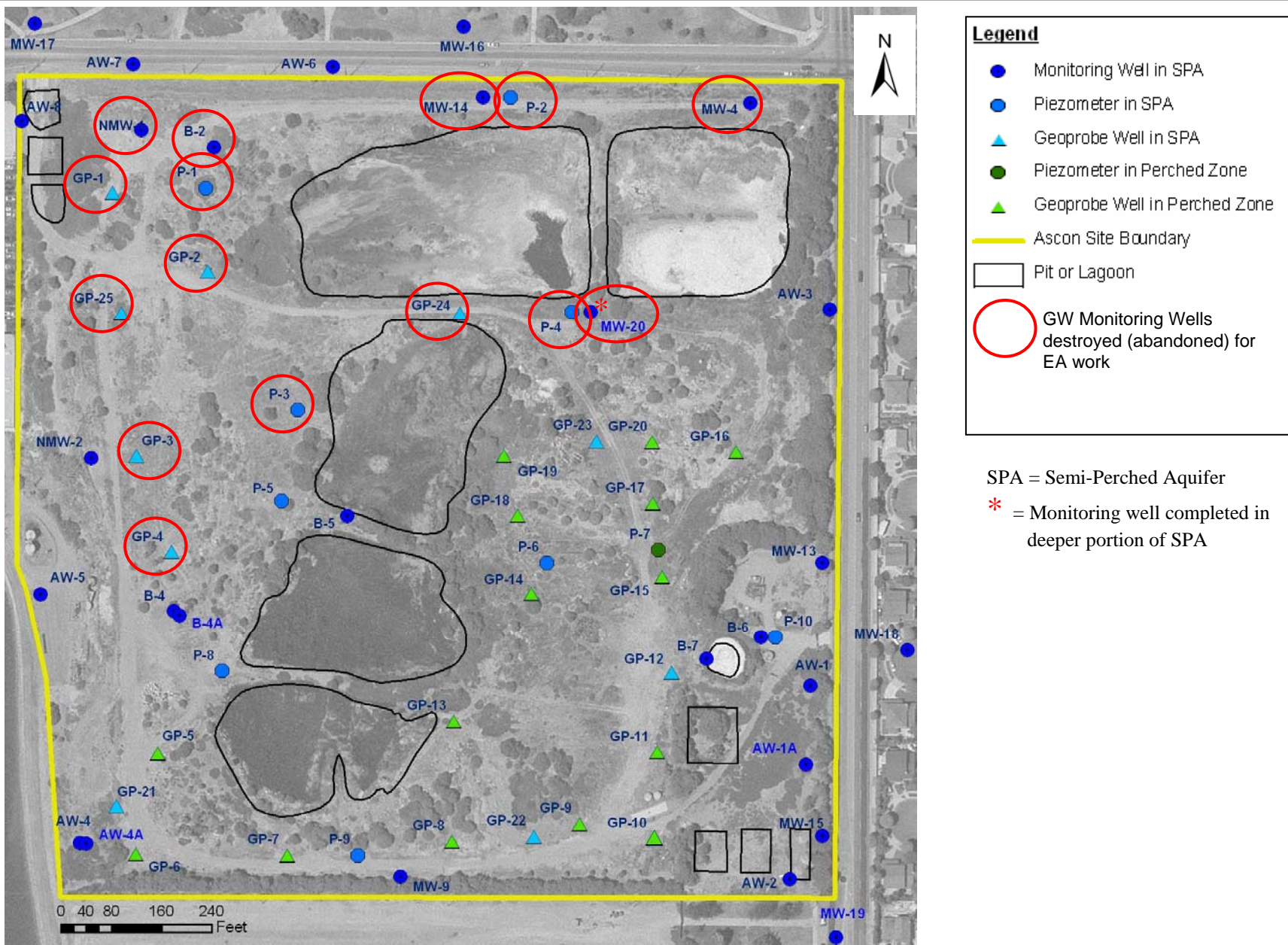


SPA = Semi-Perched Aquifer

* = Monitoring well completed in deeper portion of SPA

Location of Monitoring Wells, Piezometers, and Geoprobe Wells in SPA and Perched Zone on 2004 Site.

Figure 4-1



Base figure: Figure 4-1 from Groundwater Remedial Investigation Report, GeoSyntec, 2005.

Location of Monitoring Wells, Piezometers,, and Geoprobe Wells on 2006 Site and Monitoring Locations Destroyed during EA Work in 2005

Figure 4-2