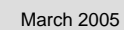


Source: PNL

Geologic Cross-Section Through Orange County Groundwater Basin

Figure 5-1

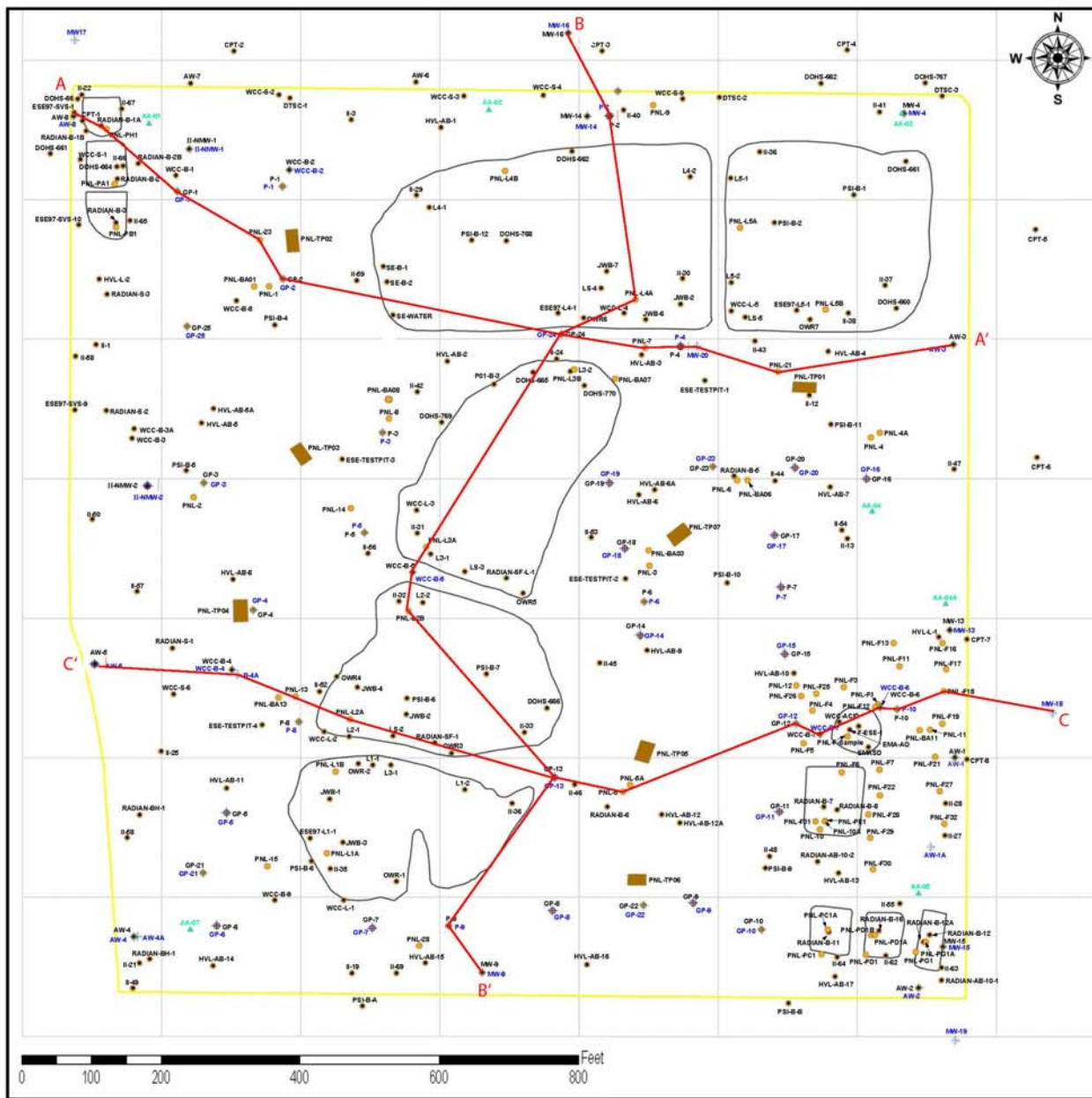




Legend

- Injection Well
- Production Well
- Domestic Well
- Agricultural Well
- OCWD Nested Monitoring Well
- OCWD Monitoring Well

Distance to Drinking Water Wells and Selected Monitoring Wells in Talbert Gap Northwest of the Santa Ana River		Figure 5-3
Source: Orange County Water District – Personal Communication Ascon Landfill Site, Huntington Beach, California		March 2005



Legend

- ▲ Air Monitoring Location
- ◆ Groundwater Monitoring Location
- SFS Sampling Location
- TM1 Sampling Location
- ★ RI Sampling Location
- SFS Trench Location
- Pit and Lagoon Boundary
- Site Boundary
- 200 Foot Grid
- A—A' Cross-Section Line

Groundwater monitoring points are labeled with additional blue text.

Cross- Section Lines A-A', B-B', and C-C'

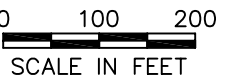
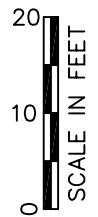
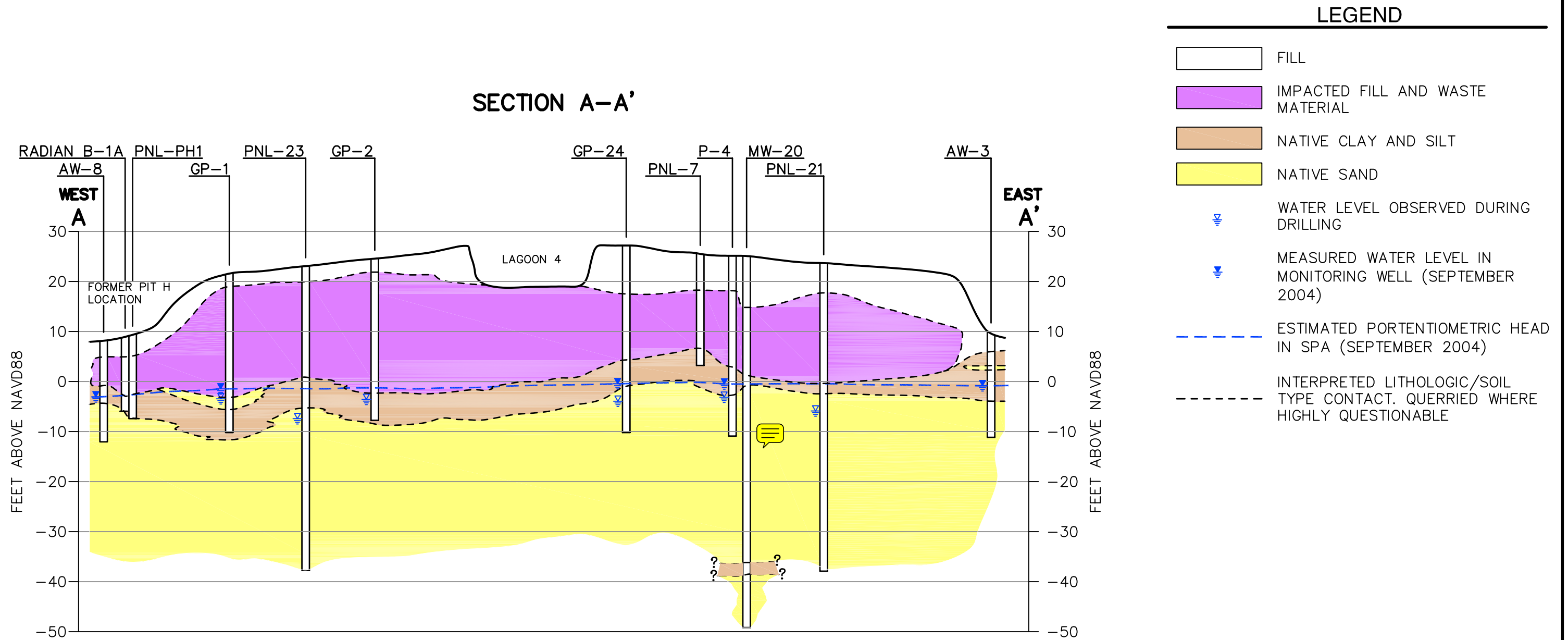
Map Source: PNL
Ascon Landfill Site
Huntington Beach, California

March, 2005

Figure 5-4

GeoSyntec Inc.

M:\Cocadd\SB0202\FIGURES\0202F002.dwg 2/17/05 10:09 VChew

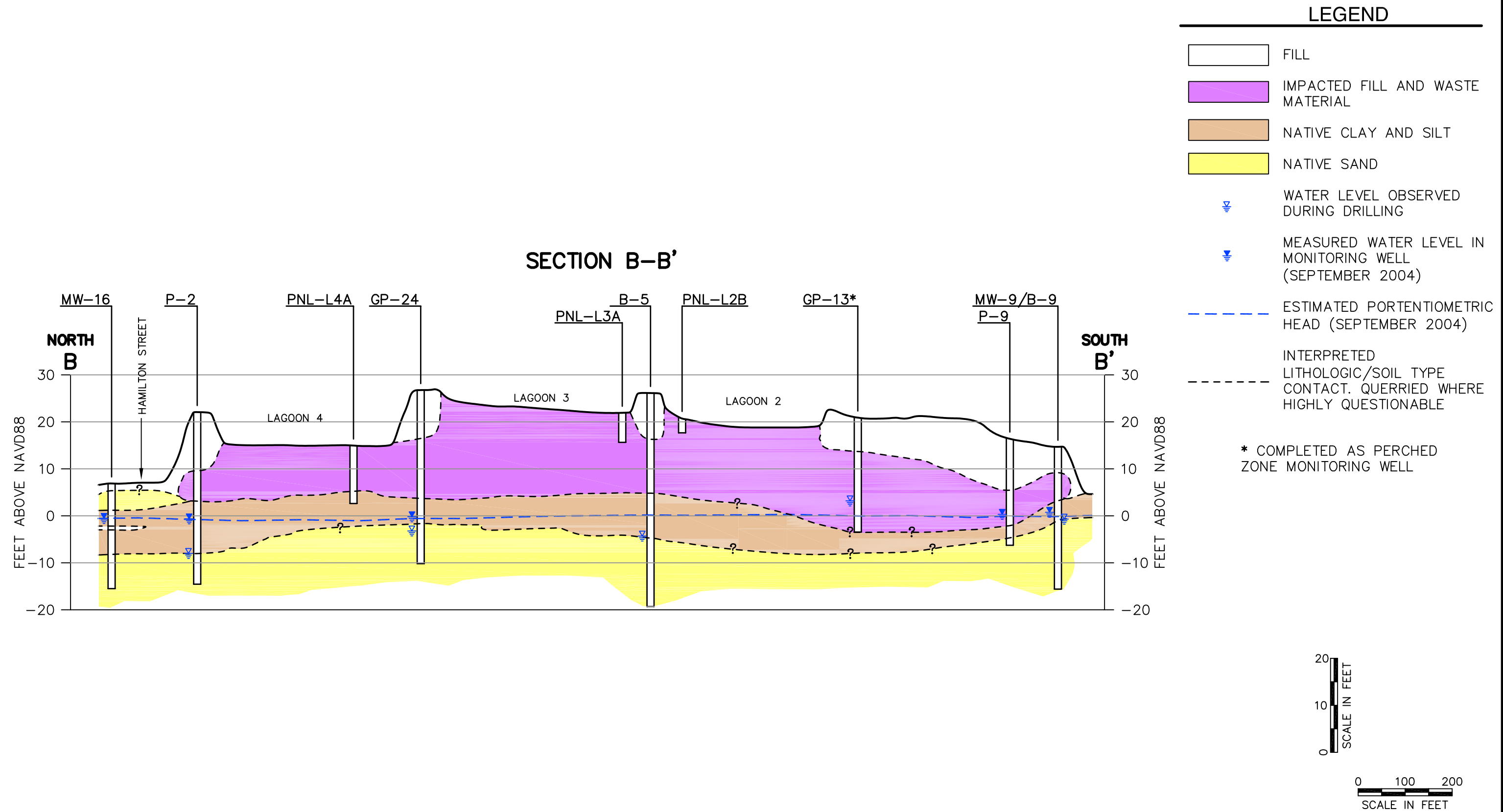


GEO SYNTec CONSULTANTS

SITE CROSS-SECTION A-A'
ASCON LANDFILL

FIGURE NO.	5-5
PROJECT NO.	SB0202-25
DATE:	MARCH 2005

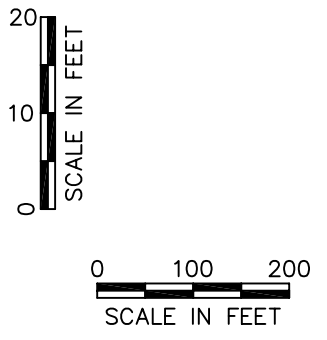
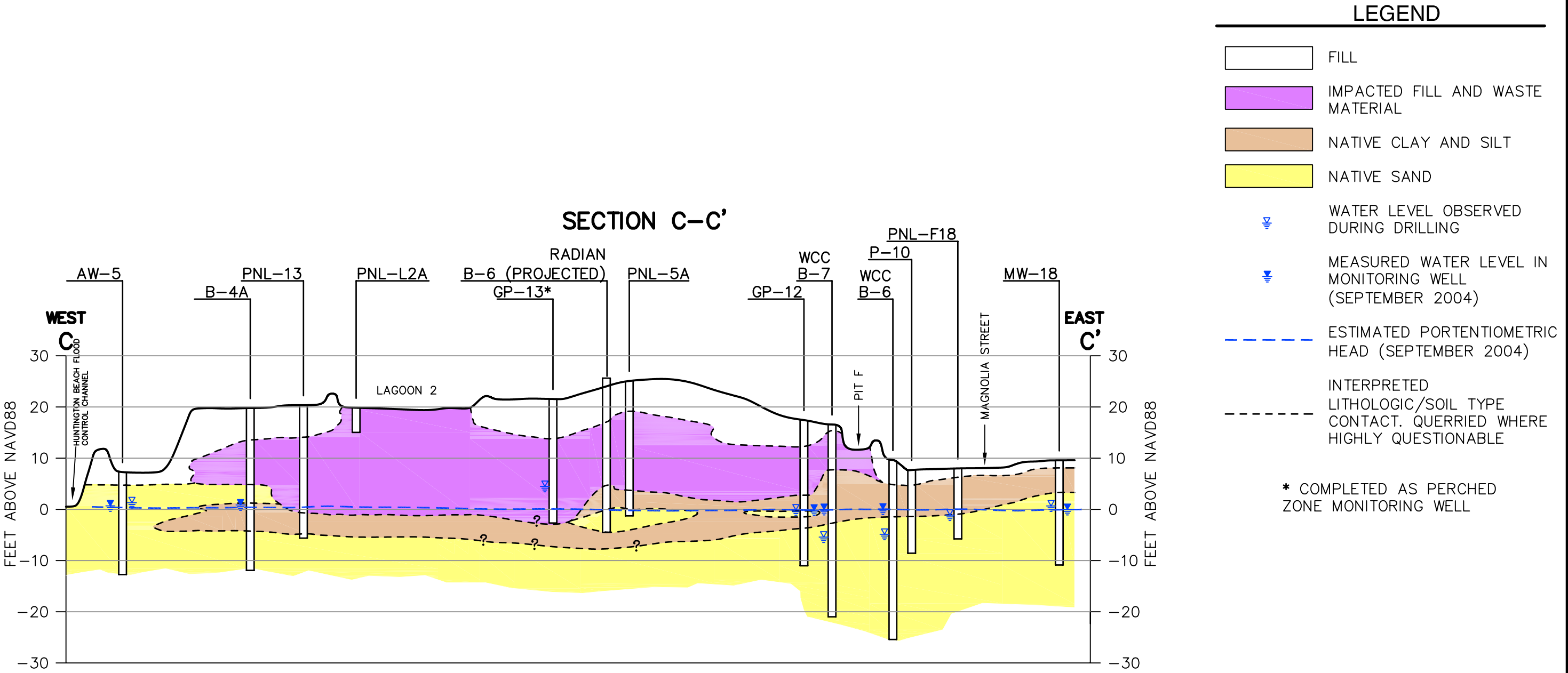
M:\Cocadd\SB0202\FIGURES\0202F003.dwg 2/17/05 10:10 VChew




SITE CROSS-SECTION B-B'
ASCON LANDFILL

FIGURE NO.	5-6
PROJECT NO.	SB0202-25
DATE:	MARCH 2005

M: \Cacadd\SB0202\FIGURES\0202F004.dwg 2/17/05 10:10 VChew



 GEOSYNTEC CONSULTANTS	
SITE CROSS-SECTION C-C' ASCON LANDFILL	
FIGURE NO.	5-7
PROJECT NO.	SB0202-25
DATE:	MARCH 2005