



LABORATORY REPORT

Prepared For: Geosyntec Consultants/Project Navigator - Ascon
2100 Main Street, Suite 150
Huntington Beach, CA 92648
Attention: Mike Reardon

Project: Ascon - Soils
SB0202/31

Sampled: 05/11/04
Received: 05/13/04
Issued: 06/09/04 11:35

NELAP #01108CA CA ELAP #1197 CSDLAC #10117

*The results listed within this Laboratory Report pertain only to the samples tested in the laboratory. The analyses contained in this report were performed in accordance with the applicable certifications as noted. All soil samples are reported on a wet weight basis unless otherwise noted in the report. This Laboratory Report is confidential and is intended for the sole use of Del Mar Analytical and its client. This report shall not be reproduced, except in full, without written permission from Del Mar Analytical. The Chain of Custody, 1 page, is included and is an integral part of this report.
This entire report was reviewed and approved for release.*

CASE NARRATIVE

- SAMPLE RECEIPT: Samples were received intact, at 2°C, on ice and with chain of custody documentation.
- HOLDING TIMES: Holding times were met.
- PRESERVATION: Samples requiring preservation were verified prior to sample analysis.
- QA/QC CRITERIA: All analyses met method criteria, except as noted in the report with data qualifiers.
- COMMENTS: No significant observations were made.
- SUBCONTRACTED: Refer to the last page for specific subcontract laboratory information included in this report.

LABORATORY ID	CLIENT ID	MATRIX
INE0765-01	PNL-BA08-Stockpile	Soil
INE0765-02	PNL-BA07-Stockpile	Soil
INE0765-03	PNL-BA01-Stockpile	Soil

Reviewed By:

Del Mar Analytical, Irvine
Amanda Cordova
Project Manager



Geosyntec Consultants/Project Navigator - Ascon
2100 Main Street, Suite 150
Huntington Beach, CA 92648
Attention: Mike Reardon

Project ID: Ascon - Soils
SB0202/31
Report Number: INE0765

Sampled: 05/11/04
Received: 05/13/04

TOTAL RECOVERABLE PETROLEUM HYDROCARBONS (EPA 418.1)

Analyte	Method	Batch	Reporting Limit	Sample Result	Dilution Factor	Date Extracted	Date Analyzed	Data Qualifiers
Sample ID: INE0765-01 (PNL-BA08-Stockpile - Soil)								
Reporting Units: mg/kg								
Total Recoverable Hydrocarbons	EPA 418.1	4E18059	1000	73000	100	5/18/2004	5/18/2004	
Sample ID: INE0765-02 (PNL-BA07-Stockpile - Soil)								
Reporting Units: mg/kg								
Total Recoverable Hydrocarbons	EPA 418.1	4E18059	200	16000	20	5/18/2004	5/18/2004	
Sample ID: INE0765-03 (PNL-BA01-Stockpile - Soil)								
Reporting Units: mg/kg								
Total Recoverable Hydrocarbons	EPA 418.1	4E18059	600	28000	20	5/18/2004	5/18/2004	

Del Mar Analytical, Irvine
Amanda Cordova
Project Manager



Geosyntec Consultants/Project Navigator - Ascon
2100 Main Street, Suite 150
Huntington Beach, CA 92648
Attention: Mike Reardon

Project ID: Ascon - Soils
SB0202/31
Report Number: INE0765

Sampled: 05/11/04
Received: 05/13/04

EXTRACTABLE FUEL HYDROCARBONS (CADHS/8015 Modified)

Analyte	Method	Batch	Reporting Limit	Sample Result	Dilution Factor	Date Extracted	Date Analyzed	Data Qualifiers
Sample ID: INE0765-01 (PNL-BA08-Stockpile - Soil)								
Reporting Units: mg/kg								
GRO (C6 - C12)	EPA 8015B MOD.	4E14064	1500	3400	300	5/14/2004	5/21/2004	
DRO/ORO (C13 - C40)	EPA 8015B MOD.	4E14064	1500	30000	300	5/14/2004	5/21/2004	
EFH (C6 - C40)	EPA 8015B MOD.	4E14064	1500	33000	300	5/14/2004	5/21/2004	B-1
Surrogate: n-Octacosane (50-125%)				338 %				Z3
Sample ID: INE0765-02 (PNL-BA07-Stockpile - Soil)								
Reporting Units: mg/kg								
GRO (C6 - C12)	EPA 8015B MOD.	4E14064	500	ND	100	5/14/2004	5/21/2004	
DRO/ORO (C13 - C40)	EPA 8015B MOD.	4E14064	500	4900	100	5/14/2004	5/21/2004	
EFH (C6 - C40)	EPA 8015B MOD.	4E14064	500	5300	100	5/14/2004	5/21/2004	B-1
Surrogate: n-Octacosane (50-125%)				277 %				Z3
Sample ID: INE0765-03 (PNL-BA01-Stockpile - Soil)								
Reporting Units: mg/kg								
GRO (C6 - C12)	EPA 8015B MOD.	4E14064	1000	1400	200	5/14/2004	5/21/2004	
DRO/ORO (C13 - C40)	EPA 8015B MOD.	4E14064	1000	14000	200	5/14/2004	5/21/2004	
EFH (C6 - C40)	EPA 8015B MOD.	4E14064	1000	15000	200	5/14/2004	5/21/2004	B-1
Surrogate: n-Octacosane (50-125%)				467 %				Z3

Del Mar Analytical, Irvine
Amanda Cordova
Project Manager



Geosyntec Consultants/Project Navigator - Ascon
2100 Main Street, Suite 150
Huntington Beach, CA 92648
Attention: Mike Reardon

Project ID: Ascon - Soils
SB0202/31
Report Number: INE0765

Sampled: 05/11/04
Received: 05/13/04

VOLATILE ORGANICS by GC/MS (EPA 5030B/8260B)

Analyte	Method	Batch	Reporting Limit	Sample Result	Dilution Factor	Date Extracted	Date Analyzed	Data Qualifiers
Sample ID: INE0765-01 (PNL-BA08-Stockpile - Soil)								
Reporting Units: ug/kg								
Benzene	EPA 8260B	4E16013	2000	3100	2000	5/16/2004	5/18/2004	
Bromobenzene	EPA 8260B	4E16013	5000	ND	2000	5/16/2004	5/18/2004	
Bromochloromethane	EPA 8260B	4E16013	5000	ND	2000	5/16/2004	5/18/2004	
Bromodichloromethane	EPA 8260B	4E16013	2000	ND	2000	5/16/2004	5/18/2004	
Bromoform	EPA 8260B	4E16013	5000	ND	2000	5/16/2004	5/18/2004	
Bromomethane	EPA 8260B	4E16013	5000	ND	2000	5/16/2004	5/18/2004	
n-Butylbenzene	EPA 8260B	4E16013	5000	ND	2000	5/16/2004	5/18/2004	
sec-Butylbenzene	EPA 8260B	4E16013	5000	ND	2000	5/16/2004	5/18/2004	
tert-Butylbenzene	EPA 8260B	4E16013	5000	ND	2000	5/16/2004	5/18/2004	
Carbon tetrachloride	EPA 8260B	4E16013	5000	ND	2000	5/16/2004	5/18/2004	
Chlorobenzene	EPA 8260B	4E16013	2000	ND	2000	5/16/2004	5/18/2004	
Chloroethane	EPA 8260B	4E16013	5000	ND	2000	5/16/2004	5/18/2004	
Chloroform	EPA 8260B	4E16013	2000	ND	2000	5/16/2004	5/18/2004	
Chloromethane	EPA 8260B	4E16013	5000	ND	2000	5/16/2004	5/18/2004	
2-Chlorotoluene	EPA 8260B	4E16013	5000	ND	2000	5/16/2004	5/18/2004	
4-Chlorotoluene	EPA 8260B	4E16013	5000	ND	2000	5/16/2004	5/18/2004	
Dibromochloromethane	EPA 8260B	4E16013	2000	ND	2000	5/16/2004	5/18/2004	
1,2-Dibromo-3-chloropropane	EPA 8260B	4E16013	5000	ND	2000	5/16/2004	5/18/2004	
1,2-Dibromoethane (EDB)	EPA 8260B	4E16013	2000	ND	2000	5/16/2004	5/18/2004	
Dibromomethane	EPA 8260B	4E16013	2000	ND	2000	5/16/2004	5/18/2004	
1,2-Dichlorobenzene	EPA 8260B	4E16013	2000	ND	2000	5/16/2004	5/18/2004	
1,3-Dichlorobenzene	EPA 8260B	4E16013	2000	ND	2000	5/16/2004	5/18/2004	
1,4-Dichlorobenzene	EPA 8260B	4E16013	2000	ND	2000	5/16/2004	5/18/2004	
Dichlorodifluoromethane	EPA 8260B	4E16013	5000	ND	2000	5/16/2004	5/18/2004	
1,1-Dichloroethane	EPA 8260B	4E16013	2000	ND	2000	5/16/2004	5/18/2004	
1,2-Dichloroethane	EPA 8260B	4E16013	2000	ND	2000	5/16/2004	5/18/2004	
1,1-Dichloroethene	EPA 8260B	4E16013	5000	ND	2000	5/16/2004	5/18/2004	
cis-1,2-Dichloroethene	EPA 8260B	4E16013	2000	ND	2000	5/16/2004	5/18/2004	
trans-1,2-Dichloroethene	EPA 8260B	4E16013	2000	ND	2000	5/16/2004	5/18/2004	
1,2-Dichloropropane	EPA 8260B	4E16013	2000	ND	2000	5/16/2004	5/18/2004	
1,3-Dichloropropane	EPA 8260B	4E16013	2000	ND	2000	5/16/2004	5/18/2004	
2,2-Dichloropropane	EPA 8260B	4E16013	2000	ND	2000	5/16/2004	5/18/2004	
1,1-Dichloropropene	EPA 8260B	4E16013	2000	ND	2000	5/16/2004	5/18/2004	
cis-1,3-Dichloropropene	EPA 8260B	4E16013	2000	ND	2000	5/16/2004	5/18/2004	
trans-1,3-Dichloropropene	EPA 8260B	4E16013	2000	ND	2000	5/16/2004	5/18/2004	
Ethylbenzene	EPA 8260B	4E16013	2000	11000	2000	5/16/2004	5/18/2004	
Hexachlorobutadiene	EPA 8260B	4E16013	5000	ND	2000	5/16/2004	5/18/2004	
Isopropylbenzene	EPA 8260B	4E16013	2000	ND	2000	5/16/2004	5/18/2004	
p-Isopropyltoluene	EPA 8260B	4E16013	2000	ND	2000	5/16/2004	5/18/2004	
Methylene chloride	EPA 8260B	4E16013	20000	ND	2000	5/16/2004	5/18/2004	
n-Propylbenzene	EPA 8260B	4E16013	2000	ND	2000	5/16/2004	5/18/2004	

Del Mar Analytical, Irvine
Amanda Cordova
Project Manager

Geosyntec Consultants/Project Navigator - Ascon
 2100 Main Street, Suite 150
 Huntington Beach, CA 92648
 Attention: Mike Reardon

Project ID: Ascon - Soils
 SB0202/31
 Report Number: INE0765

Sampled: 05/11/04
 Received: 05/13/04

VOLATILE ORGANICS by GC/MS (EPA 5030B/8260B)

Analyte	Method	Batch	Reporting Limit	Sample Result	Dilution Factor	Date Extracted	Date Analyzed	Data Qualifiers
Sample ID: INE0765-01 (PNL-BA08-Stockpile - Soil) - cont.								
Reporting Units: ug/kg								
Styrene	EPA 8260B	4E16013	2000	3300	2000	5/16/2004	5/18/2004	
1,1,1,2-Tetrachloroethane	EPA 8260B	4E16013	5000	ND	2000	5/16/2004	5/18/2004	
1,1,2,2-Tetrachloroethane	EPA 8260B	4E16013	2000	ND	2000	5/16/2004	5/18/2004	
Tetrachloroethene	EPA 8260B	4E16013	2000	ND	2000	5/16/2004	5/18/2004	
Toluene	EPA 8260B	4E16013	2000	5600	2000	5/16/2004	5/18/2004	
1,2,3-Trichlorobenzene	EPA 8260B	4E16013	5000	ND	2000	5/16/2004	5/18/2004	
1,2,4-Trichlorobenzene	EPA 8260B	4E16013	5000	ND	2000	5/16/2004	5/18/2004	
1,1,1-Trichloroethane	EPA 8260B	4E16013	2000	ND	2000	5/16/2004	5/18/2004	
1,1,2-Trichloroethane	EPA 8260B	4E16013	2000	ND	2000	5/16/2004	5/18/2004	
Trichloroethene	EPA 8260B	4E16013	2000	ND	2000	5/16/2004	5/18/2004	
Trichlorofluoromethane	EPA 8260B	4E16013	5000	ND	2000	5/16/2004	5/18/2004	
1,2,3-Trichloropropane	EPA 8260B	4E16013	10000	ND	2000	5/16/2004	5/18/2004	
1,2,4-Trimethylbenzene	EPA 8260B	4E16013	2000	12000	2000	5/16/2004	5/18/2004	
1,3,5-Trimethylbenzene	EPA 8260B	4E16013	2000	3500	2000	5/16/2004	5/18/2004	
Vinyl chloride	EPA 8260B	4E16013	5000	ND	2000	5/16/2004	5/18/2004	
o-Xylene	EPA 8260B	4E16013	2000	4700	2000	5/16/2004	5/18/2004	
m,p-Xylenes	EPA 8260B	4E16013	2000	7700	2000	5/16/2004	5/18/2004	
<i>Surrogate: Dibromofluoromethane (50-160%)</i>				65 %				Z3
<i>Surrogate: Toluene-d8 (60-160%)</i>				55 %				Z3
<i>Surrogate: 4-Bromofluorobenzene (60-150%)</i>				66 %				Z3

Del Mar Analytical, Irvine
 Amanda Cordova
 Project Manager



Geosyntec Consultants/Project Navigator - Ascon
2100 Main Street, Suite 150
Huntington Beach, CA 92648
Attention: Mike Reardon

Project ID: Ascon - Soils
SB0202/31
Report Number: INE0765

Sampled: 05/11/04
Received: 05/13/04

VOLATILE ORGANICS by GC/MS (EPA 5030B/8260B)

Analyte	Method	Batch	Reporting Limit	Sample Result	Dilution Factor	Date Extracted	Date Analyzed	Data Qualifiers
Sample ID: INE0765-01RE1 (PNL-BA08-Stockpile - Soil) - cont.								
Reporting Units: ug/kg								
Naphthalene	EPA 8260B	4E16013	12000	300000	5000	5/16/2004	5/18/2004	
<i>Surrogate: Dibromofluoromethane (50-160%)</i>				70 %				Z3
<i>Surrogate: Toluene-d8 (60-160%)</i>				74 %				Z3
<i>Surrogate: 4-Bromofluorobenzene (60-150%)</i>				146 %				Z3

Del Mar Analytical, Irvine
Amanda Cordova
Project Manager



Geosyntec Consultants/Project Navigator - Ascon
2100 Main Street, Suite 150
Huntington Beach, CA 92648
Attention: Mike Reardon

Project ID: Ascon - Soils
SB0202/31
Report Number: INE0765

Sampled: 05/11/04
Received: 05/13/04

VOLATILE ORGANICS by GC/MS (EPA 5030B/8260B)

Analyte	Method	Batch	Reporting Limit	Sample Result	Dilution Factor	Date Extracted	Date Analyzed	Data Qualifiers
Sample ID: INE0765-02 (PNL-BA07-Stockpile - Soil)								
Reporting Units: ug/kg								
Benzene	EPA 8260B	4E16013	100	ND	100	5/16/2004	5/16/2004	
Bromobenzene	EPA 8260B	4E16013	250	ND	100	5/16/2004	5/16/2004	
Bromochloromethane	EPA 8260B	4E16013	250	ND	100	5/16/2004	5/16/2004	
Bromodichloromethane	EPA 8260B	4E16013	100	ND	100	5/16/2004	5/16/2004	
Bromoform	EPA 8260B	4E16013	250	ND	100	5/16/2004	5/16/2004	
Bromomethane	EPA 8260B	4E16013	250	ND	100	5/16/2004	5/16/2004	
n-Butylbenzene	EPA 8260B	4E16013	250	870	100	5/16/2004	5/16/2004	
sec-Butylbenzene	EPA 8260B	4E16013	250	590	100	5/16/2004	5/16/2004	
tert-Butylbenzene	EPA 8260B	4E16013	250	ND	100	5/16/2004	5/16/2004	
Carbon tetrachloride	EPA 8260B	4E16013	250	ND	100	5/16/2004	5/16/2004	
Chlorobenzene	EPA 8260B	4E16013	100	ND	100	5/16/2004	5/16/2004	
Chloroethane	EPA 8260B	4E16013	250	ND	100	5/16/2004	5/16/2004	
Chloroform	EPA 8260B	4E16013	100	ND	100	5/16/2004	5/16/2004	
Chloromethane	EPA 8260B	4E16013	250	ND	100	5/16/2004	5/16/2004	
2-Chlorotoluene	EPA 8260B	4E16013	250	ND	100	5/16/2004	5/16/2004	
4-Chlorotoluene	EPA 8260B	4E16013	250	ND	100	5/16/2004	5/16/2004	
Dibromochloromethane	EPA 8260B	4E16013	100	ND	100	5/16/2004	5/16/2004	
1,2-Dibromo-3-chloropropane	EPA 8260B	4E16013	250	ND	100	5/16/2004	5/16/2004	
1,2-Dibromoethane (EDB)	EPA 8260B	4E16013	100	ND	100	5/16/2004	5/16/2004	
Dibromomethane	EPA 8260B	4E16013	100	ND	100	5/16/2004	5/16/2004	
1,2-Dichlorobenzene	EPA 8260B	4E16013	100	ND	100	5/16/2004	5/16/2004	
1,3-Dichlorobenzene	EPA 8260B	4E16013	100	ND	100	5/16/2004	5/16/2004	
1,4-Dichlorobenzene	EPA 8260B	4E16013	100	ND	100	5/16/2004	5/16/2004	
Dichlorodifluoromethane	EPA 8260B	4E16013	250	ND	100	5/16/2004	5/16/2004	
1,1-Dichloroethane	EPA 8260B	4E16013	100	ND	100	5/16/2004	5/16/2004	
1,2-Dichloroethane	EPA 8260B	4E16013	100	ND	100	5/16/2004	5/16/2004	
1,1-Dichloroethene	EPA 8260B	4E16013	250	ND	100	5/16/2004	5/16/2004	
cis-1,2-Dichloroethene	EPA 8260B	4E16013	100	ND	100	5/16/2004	5/16/2004	
trans-1,2-Dichloroethene	EPA 8260B	4E16013	100	ND	100	5/16/2004	5/16/2004	
1,2-Dichloropropane	EPA 8260B	4E16013	100	ND	100	5/16/2004	5/16/2004	
1,3-Dichloropropane	EPA 8260B	4E16013	100	ND	100	5/16/2004	5/16/2004	
2,2-Dichloropropane	EPA 8260B	4E16013	100	ND	100	5/16/2004	5/16/2004	
1,1-Dichloropropene	EPA 8260B	4E16013	100	ND	100	5/16/2004	5/16/2004	
cis-1,3-Dichloropropene	EPA 8260B	4E16013	100	ND	100	5/16/2004	5/16/2004	
trans-1,3-Dichloropropene	EPA 8260B	4E16013	100	ND	100	5/16/2004	5/16/2004	
Ethylbenzene	EPA 8260B	4E16013	100	710	100	5/16/2004	5/16/2004	
Hexachlorobutadiene	EPA 8260B	4E16013	250	ND	100	5/16/2004	5/16/2004	
Isopropylbenzene	EPA 8260B	4E16013	100	760	100	5/16/2004	5/16/2004	
p-Isopropyltoluene	EPA 8260B	4E16013	100	630	100	5/16/2004	5/16/2004	
Methylene chloride	EPA 8260B	4E16013	1000	ND	100	5/16/2004	5/16/2004	
Naphthalene	EPA 8260B	4E16013	250	3900	100	5/16/2004	5/16/2004	

Del Mar Analytical, Irvine
Amanda Cordova
Project Manager

Geosyntec Consultants/Project Navigator - Ascon
 2100 Main Street, Suite 150
 Huntington Beach, CA 92648
 Attention: Mike Reardon

Project ID: Ascon - Soils
 SB0202/31
 Report Number: INE0765

Sampled: 05/11/04
 Received: 05/13/04

VOLATILE ORGANICS by GC/MS (EPA 5030B/8260B)

Analyte	Method	Batch	Reporting Limit	Sample Result	Dilution Factor	Date Extracted	Date Analyzed	Data Qualifiers
Sample ID: INE0765-02 (PNL-BA07-Stockpile - Soil) - cont.								
Reporting Units: ug/kg								
n-Propylbenzene	EPA 8260B	4E16013	100	1100	100	5/16/2004	5/16/2004	
Styrene	EPA 8260B	4E16013	100	ND	100	5/16/2004	5/16/2004	
1,1,1,2-Tetrachloroethane	EPA 8260B	4E16013	250	ND	100	5/16/2004	5/16/2004	
1,1,2,2-Tetrachloroethane	EPA 8260B	4E16013	100	ND	100	5/16/2004	5/16/2004	
Tetrachloroethene	EPA 8260B	4E16013	100	ND	100	5/16/2004	5/16/2004	
Toluene	EPA 8260B	4E16013	100	ND	100	5/16/2004	5/16/2004	
1,2,3-Trichlorobenzene	EPA 8260B	4E16013	250	ND	100	5/16/2004	5/16/2004	
1,2,4-Trichlorobenzene	EPA 8260B	4E16013	250	ND	100	5/16/2004	5/16/2004	
1,1,1-Trichloroethane	EPA 8260B	4E16013	100	ND	100	5/16/2004	5/16/2004	
1,1,2-Trichloroethane	EPA 8260B	4E16013	100	ND	100	5/16/2004	5/16/2004	
Trichloroethene	EPA 8260B	4E16013	100	ND	100	5/16/2004	5/16/2004	
Trichlorofluoromethane	EPA 8260B	4E16013	250	ND	100	5/16/2004	5/16/2004	
1,2,3-Trichloropropane	EPA 8260B	4E16013	500	ND	100	5/16/2004	5/16/2004	
1,2,4-Trimethylbenzene	EPA 8260B	4E16013	100	2000	100	5/16/2004	5/16/2004	
1,3,5-Trimethylbenzene	EPA 8260B	4E16013	100	470	100	5/16/2004	5/16/2004	
Vinyl chloride	EPA 8260B	4E16013	250	ND	100	5/16/2004	5/16/2004	
o-Xylene	EPA 8260B	4E16013	100	310	100	5/16/2004	5/16/2004	
m,p-Xylenes	EPA 8260B	4E16013	100	780	100	5/16/2004	5/16/2004	
<i>Surrogate: Dibromofluoromethane (50-160%)</i>				<i>111 %</i>				
<i>Surrogate: Toluene-d8 (60-160%)</i>				<i>112 %</i>				
<i>Surrogate: 4-Bromofluorobenzene (60-150%)</i>				<i>113 %</i>				

Del Mar Analytical, Irvine
 Amanda Cordova
 Project Manager



Geosyntec Consultants/Project Navigator - Ascon
2100 Main Street, Suite 150
Huntington Beach, CA 92648
Attention: Mike Reardon

Project ID: Ascon - Soils
SB0202/31
Report Number: INE0765

Sampled: 05/11/04
Received: 05/13/04

VOLATILE ORGANICS by GC/MS (EPA 5030B/8260B)

Analyte	Method	Batch	Reporting Limit	Sample Result	Dilution Factor	Date Extracted	Date Analyzed	Data Qualifiers
Sample ID: INE0765-03 (PNL-BA01-Stockpile - Soil)								
Reporting Units: ug/kg								
Benzene	EPA 8260B	4E16013	100	620	100	5/16/2004	5/16/2004	
Bromobenzene	EPA 8260B	4E16013	250	ND	100	5/16/2004	5/16/2004	
Bromochloromethane	EPA 8260B	4E16013	250	ND	100	5/16/2004	5/16/2004	
Bromodichloromethane	EPA 8260B	4E16013	100	ND	100	5/16/2004	5/16/2004	
Bromoform	EPA 8260B	4E16013	250	ND	100	5/16/2004	5/16/2004	
Bromomethane	EPA 8260B	4E16013	250	ND	100	5/16/2004	5/16/2004	
n-Butylbenzene	EPA 8260B	4E16013	250	1300	100	5/16/2004	5/16/2004	
sec-Butylbenzene	EPA 8260B	4E16013	250	820	100	5/16/2004	5/16/2004	
tert-Butylbenzene	EPA 8260B	4E16013	250	ND	100	5/16/2004	5/16/2004	
Carbon tetrachloride	EPA 8260B	4E16013	250	ND	100	5/16/2004	5/16/2004	
Chlorobenzene	EPA 8260B	4E16013	100	ND	100	5/16/2004	5/16/2004	
Chloroethane	EPA 8260B	4E16013	250	ND	100	5/16/2004	5/16/2004	
Chloroform	EPA 8260B	4E16013	100	ND	100	5/16/2004	5/16/2004	
Chloromethane	EPA 8260B	4E16013	250	ND	100	5/16/2004	5/16/2004	
2-Chlorotoluene	EPA 8260B	4E16013	250	ND	100	5/16/2004	5/16/2004	
4-Chlorotoluene	EPA 8260B	4E16013	250	ND	100	5/16/2004	5/16/2004	
Dibromochloromethane	EPA 8260B	4E16013	100	ND	100	5/16/2004	5/16/2004	
1,2-Dibromo-3-chloropropane	EPA 8260B	4E16013	250	ND	100	5/16/2004	5/16/2004	
1,2-Dibromoethane (EDB)	EPA 8260B	4E16013	100	ND	100	5/16/2004	5/16/2004	
Dibromomethane	EPA 8260B	4E16013	100	ND	100	5/16/2004	5/16/2004	
1,2-Dichlorobenzene	EPA 8260B	4E16013	100	ND	100	5/16/2004	5/16/2004	
1,3-Dichlorobenzene	EPA 8260B	4E16013	100	ND	100	5/16/2004	5/16/2004	
1,4-Dichlorobenzene	EPA 8260B	4E16013	100	ND	100	5/16/2004	5/16/2004	
Dichlorodifluoromethane	EPA 8260B	4E16013	250	ND	100	5/16/2004	5/16/2004	
1,1-Dichloroethane	EPA 8260B	4E16013	100	ND	100	5/16/2004	5/16/2004	
1,2-Dichloroethane	EPA 8260B	4E16013	100	ND	100	5/16/2004	5/16/2004	
1,1-Dichloroethene	EPA 8260B	4E16013	250	ND	100	5/16/2004	5/16/2004	
cis-1,2-Dichloroethene	EPA 8260B	4E16013	100	ND	100	5/16/2004	5/16/2004	
trans-1,2-Dichloroethene	EPA 8260B	4E16013	100	ND	100	5/16/2004	5/16/2004	
1,2-Dichloropropane	EPA 8260B	4E16013	100	ND	100	5/16/2004	5/16/2004	
1,3-Dichloropropane	EPA 8260B	4E16013	100	ND	100	5/16/2004	5/16/2004	
2,2-Dichloropropane	EPA 8260B	4E16013	100	ND	100	5/16/2004	5/16/2004	
1,1-Dichloropropene	EPA 8260B	4E16013	100	ND	100	5/16/2004	5/16/2004	
cis-1,3-Dichloropropene	EPA 8260B	4E16013	100	ND	100	5/16/2004	5/16/2004	
trans-1,3-Dichloropropene	EPA 8260B	4E16013	100	ND	100	5/16/2004	5/16/2004	
Ethylbenzene	EPA 8260B	4E16013	100	2200	100	5/16/2004	5/16/2004	
Hexachlorobutadiene	EPA 8260B	4E16013	250	ND	100	5/16/2004	5/16/2004	
Isopropylbenzene	EPA 8260B	4E16013	100	1100	100	5/16/2004	5/16/2004	
p-Isopropyltoluene	EPA 8260B	4E16013	100	1200	100	5/16/2004	5/16/2004	
Methylene chloride	EPA 8260B	4E16013	1000	ND	100	5/16/2004	5/16/2004	
Naphthalene	EPA 8260B	4E16013	250	5400	100	5/16/2004	5/16/2004	

Del Mar Analytical, Irvine
Amanda Cordova
Project Manager

Geosyntec Consultants/Project Navigator - Ascon
 2100 Main Street, Suite 150
 Huntington Beach, CA 92648
 Attention: Mike Reardon

Project ID: Ascon - Soils
 SB0202/31
 Report Number: INE0765

Sampled: 05/11/04
 Received: 05/13/04

VOLATILE ORGANICS by GC/MS (EPA 5030B/8260B)

Analyte	Method	Batch	Reporting Limit	Sample Result	Dilution Factor	Date Extracted	Date Analyzed	Data Qualifiers
Sample ID: INE0765-03 (PNL-BA01-Stockpile - Soil) - cont.								
Reporting Units: ug/kg								
n-Propylbenzene	EPA 8260B	4E16013	100	1800	100	5/16/2004	5/16/2004	
Styrene	EPA 8260B	4E16013	100	ND	100	5/16/2004	5/16/2004	
1,1,1,2-Tetrachloroethane	EPA 8260B	4E16013	250	ND	100	5/16/2004	5/16/2004	
1,1,2,2-Tetrachloroethane	EPA 8260B	4E16013	100	ND	100	5/16/2004	5/16/2004	
Tetrachloroethene	EPA 8260B	4E16013	100	ND	100	5/16/2004	5/16/2004	
Toluene	EPA 8260B	4E16013	100	2900	100	5/16/2004	5/16/2004	
1,2,3-Trichlorobenzene	EPA 8260B	4E16013	250	ND	100	5/16/2004	5/16/2004	
1,2,4-Trichlorobenzene	EPA 8260B	4E16013	250	ND	100	5/16/2004	5/16/2004	
1,1,1-Trichloroethane	EPA 8260B	4E16013	100	ND	100	5/16/2004	5/16/2004	
1,1,2-Trichloroethane	EPA 8260B	4E16013	100	ND	100	5/16/2004	5/16/2004	
Trichloroethene	EPA 8260B	4E16013	100	ND	100	5/16/2004	5/16/2004	
Trichlorofluoromethane	EPA 8260B	4E16013	250	ND	100	5/16/2004	5/16/2004	
1,2,3-Trichloropropane	EPA 8260B	4E16013	500	ND	100	5/16/2004	5/16/2004	
1,2,4-Trimethylbenzene	EPA 8260B	4E16013	100	5600	100	5/16/2004	5/16/2004	
1,3,5-Trimethylbenzene	EPA 8260B	4E16013	100	2000	100	5/16/2004	5/16/2004	
Vinyl chloride	EPA 8260B	4E16013	250	ND	100	5/16/2004	5/16/2004	
o-Xylene	EPA 8260B	4E16013	100	3100	100	5/16/2004	5/16/2004	
m,p-Xylenes	EPA 8260B	4E16013	100	5900	100	5/16/2004	5/16/2004	
<i>Surrogate: Dibromofluoromethane (50-160%)</i>				<i>104 %</i>				
<i>Surrogate: Toluene-d8 (60-160%)</i>				<i>114 %</i>				
<i>Surrogate: 4-Bromofluorobenzene (60-150%)</i>				<i>112 %</i>				

Del Mar Analytical, Irvine
 Amanda Cordova
 Project Manager

Geosyntec Consultants/Project Navigator - Ascon
 2100 Main Street, Suite 150
 Huntington Beach, CA 92648
 Attention: Mike Reardon

Project ID: Ascon - Soils
 SB0202/31
 Report Number: INE0765

Sampled: 05/11/04
 Received: 05/13/04

SEMI-VOLATILE ORGANICS BY GC/MS (EPA 3545/8270C)

Analyte	Method	Batch	Reporting Limit	Sample Result	Dilution Factor	Date Extracted	Date Analyzed	Data Qualifiers
Sample ID: INE0765-01RE1 (PNL-BA08-Stockpile - Soil)								RL-2
Reporting Units: ug/kg								
Acenaphthene	EPA 8270C	4E19041	6700	ND	20	5/19/2004	5/20/2004	
Acenaphthylene	EPA 8270C	4E19041	6700	ND	20	5/19/2004	5/20/2004	
Aniline	EPA 8270C	4E19041	8300	ND	20	5/19/2004	5/20/2004	
Anthracene	EPA 8270C	4E19041	6700	ND	20	5/19/2004	5/20/2004	
Benzidine	EPA 8270C	4E19041	13000	ND	20	5/19/2004	5/20/2004	
Benzoic acid	EPA 8270C	4E19041	17000	ND	20	5/19/2004	5/20/2004	
Benzo(a)anthracene	EPA 8270C	4E19041	6700	ND	20	5/19/2004	5/20/2004	
Benzo(b)fluoranthene	EPA 8270C	4E19041	6700	ND	20	5/19/2004	5/20/2004	
Benzo(k)fluoranthene	EPA 8270C	4E19041	6700	ND	20	5/19/2004	5/20/2004	
Benzo(g,h,i)perylene	EPA 8270C	4E19041	6700	ND	20	5/19/2004	5/20/2004	
Benzo(a)pyrene	EPA 8270C	4E19041	6700	ND	20	5/19/2004	5/20/2004	
Benzyl alcohol	EPA 8270C	4E19041	6700	ND	20	5/19/2004	5/20/2004	
Bis(2-chloroethoxy)methane	EPA 8270C	4E19041	6700	ND	20	5/19/2004	5/20/2004	
Bis(2-chloroethyl)ether	EPA 8270C	4E19041	3300	ND	20	5/19/2004	5/20/2004	
Bis(2-chloroisopropyl)ether	EPA 8270C	4E19041	6700	ND	20	5/19/2004	5/20/2004	
Bis(2-ethylhexyl)phthalate	EPA 8270C	4E19041	6700	ND	20	5/19/2004	5/20/2004	
4-Bromophenyl phenyl ether	EPA 8270C	4E19041	6700	ND	20	5/19/2004	5/20/2004	
Butyl benzyl phthalate	EPA 8270C	4E19041	6700	ND	20	5/19/2004	5/20/2004	
4-Chloroaniline	EPA 8270C	4E19041	6700	ND	20	5/19/2004	5/20/2004	
2-Chloronaphthalene	EPA 8270C	4E19041	6700	ND	20	5/19/2004	5/20/2004	
4-Chloro-3-methylphenol	EPA 8270C	4E19041	6700	ND	20	5/19/2004	5/20/2004	
2-Chlorophenol	EPA 8270C	4E19041	6700	ND	20	5/19/2004	5/20/2004	
4-Chlorophenyl phenyl ether	EPA 8270C	4E19041	6700	ND	20	5/19/2004	5/20/2004	
Chrysene	EPA 8270C	4E19041	6700	ND	20	5/19/2004	5/20/2004	
Dibenz(a,h)anthracene	EPA 8270C	4E19041	8300	ND	20	5/19/2004	5/20/2004	
Dibenzofuran	EPA 8270C	4E19041	6700	ND	20	5/19/2004	5/20/2004	
Di-n-butyl phthalate	EPA 8270C	4E19041	6700	ND	20	5/19/2004	5/20/2004	
1,3-Dichlorobenzene	EPA 8270C	4E19041	6700	ND	20	5/19/2004	5/20/2004	
1,4-Dichlorobenzene	EPA 8270C	4E19041	6700	ND	20	5/19/2004	5/20/2004	
1,2-Dichlorobenzene	EPA 8270C	4E19041	6700	ND	20	5/19/2004	5/20/2004	
3,3-Dichlorobenzidine	EPA 8270C	4E19041	17000	ND	20	5/19/2004	5/20/2004	
2,4-Dichlorophenol	EPA 8270C	4E19041	6700	ND	20	5/19/2004	5/20/2004	
Diethyl phthalate	EPA 8270C	4E19041	6700	ND	20	5/19/2004	5/20/2004	
2,4-Dimethylphenol	EPA 8270C	4E19041	6700	ND	20	5/19/2004	5/20/2004	
Dimethyl phthalate	EPA 8270C	4E19041	6700	ND	20	5/19/2004	5/20/2004	
4,6-Dinitro-2-methylphenol	EPA 8270C	4E19041	8300	ND	20	5/19/2004	5/20/2004	
2,4-Dinitrophenol	EPA 8270C	4E19041	8300	ND	20	5/19/2004	5/20/2004	
2,4-Dinitrotoluene	EPA 8270C	4E19041	6700	ND	20	5/19/2004	5/20/2004	
2,6-Dinitrotoluene	EPA 8270C	4E19041	6700	ND	20	5/19/2004	5/20/2004	
Di-n-octyl phthalate	EPA 8270C	4E19041	6700	ND	20	5/19/2004	5/20/2004	
Fluoranthene	EPA 8270C	4E19041	6700	ND	20	5/19/2004	5/20/2004	

Del Mar Analytical, Irvine
 Amanda Cordova
 Project Manager

Geosyntec Consultants/Project Navigator - Ascon
 2100 Main Street, Suite 150
 Huntington Beach, CA 92648
 Attention: Mike Reardon

Project ID: Ascon - Soils
 SB0202/31
 Report Number: INE0765

Sampled: 05/11/04
 Received: 05/13/04

SEMI-VOLATILE ORGANICS BY GC/MS (EPA 3545/8270C)

Analyte	Method	Batch	Reporting Limit	Sample Result	Dilution Factor	Date Extracted	Date Analyzed	Data Qualifiers
Sample ID: INE0765-01RE1 (PNL-BA08-Stockpile - Soil) - cont.								RL-2
Reporting Units: ug/kg								
Fluorene	EPA 8270C	4E19041	6700	ND	20	5/19/2004	5/20/2004	
Hexachlorobenzene	EPA 8270C	4E19041	6700	ND	20	5/19/2004	5/20/2004	
Hexachlorobutadiene	EPA 8270C	4E19041	6700	ND	20	5/19/2004	5/20/2004	
Hexachlorocyclopentadiene	EPA 8270C	4E19041	17000	ND	20	5/19/2004	5/20/2004	
Hexachloroethane	EPA 8270C	4E19041	6700	ND	20	5/19/2004	5/20/2004	
Indeno(1,2,3-cd)pyrene	EPA 8270C	4E19041	6700	ND	20	5/19/2004	5/20/2004	
Isophorone	EPA 8270C	4E19041	6700	ND	20	5/19/2004	5/20/2004	
2-Methylnaphthalene	EPA 8270C	4E19041	6700	ND	20	5/19/2004	5/20/2004	
2-Methylphenol	EPA 8270C	4E19041	6700	ND	20	5/19/2004	5/20/2004	
4-Methylphenol	EPA 8270C	4E19041	6700	ND	20	5/19/2004	5/20/2004	
Naphthalene	EPA 8270C	4E19041	6700	ND	20	5/19/2004	5/20/2004	
2-Nitroaniline	EPA 8270C	4E19041	6700	ND	20	5/19/2004	5/20/2004	
3-Nitroaniline	EPA 8270C	4E19041	6700	ND	20	5/19/2004	5/20/2004	
4-Nitroaniline	EPA 8270C	4E19041	17000	ND	20	5/19/2004	5/20/2004	
Nitrobenzene	EPA 8270C	4E19041	6700	ND	20	5/19/2004	5/20/2004	
2-Nitrophenol	EPA 8270C	4E19041	6700	ND	20	5/19/2004	5/20/2004	
4-Nitrophenol	EPA 8270C	4E19041	17000	ND	20	5/19/2004	5/20/2004	
n-Nitrosodiphenylamine	EPA 8270C	4E19041	6700	ND	20	5/19/2004	5/20/2004	
n-Nitroso-di-n-propylamine	EPA 8270C	4E19041	5000	ND	20	5/19/2004	5/20/2004	
Pentachlorophenol	EPA 8270C	4E19041	17000	ND	20	5/19/2004	5/20/2004	
Phenanthrene	EPA 8270C	4E19041	6700	11000	20	5/19/2004	5/20/2004	
Phenol	EPA 8270C	4E19041	6700	ND	20	5/19/2004	5/20/2004	
Pyrene	EPA 8270C	4E19041	6700	ND	20	5/19/2004	5/20/2004	
1,2,4-Trichlorobenzene	EPA 8270C	4E19041	6700	ND	20	5/19/2004	5/20/2004	
2,4,5-Trichlorophenol	EPA 8270C	4E19041	6700	ND	20	5/19/2004	5/20/2004	
2,4,6-Trichlorophenol	EPA 8270C	4E19041	6700	ND	20	5/19/2004	5/20/2004	
1,2-Diphenylhydrazine/Azobenzene	EPA 8270C	4E19041	6700	ND	20	5/19/2004	5/20/2004	
Surrogate: 2-Fluorophenol (25-120%)				43 %				Z3
Surrogate: Phenol-d6 (30-120%)				47 %				Z3
Surrogate: 2,4,6-Tribromophenol (35-120%)				91 %				Z3
Surrogate: Nitrobenzene-d5 (30-120%)				51 %				Z3
Surrogate: 2-Fluorobiphenyl (35-120%)				*				Z3
Surrogate: Terphenyl-d14 (35-155%)				78 %				Z3

Del Mar Analytical, Irvine
 Amanda Cordova
 Project Manager

Geosyntec Consultants/Project Navigator - Ascon
 2100 Main Street, Suite 150
 Huntington Beach, CA 92648
 Attention: Mike Reardon

Project ID: Ascon - Soils
 SB0202/31
 Report Number: INE0765

Sampled: 05/11/04
 Received: 05/13/04

SEMI-VOLATILE ORGANICS BY GC/MS (EPA 3545/8270C)

Analyte	Method	Batch	Reporting Limit	Sample Result	Dilution Factor	Date Extracted	Date Analyzed	Data Qualifiers
Sample ID: INE0765-02RE1 (PNL-BA07-Stockpile - Soil)								RL-2
Reporting Units: ug/kg								
Acenaphthene	EPA 8270C	4E19041	6700	ND	20	5/19/2004	5/20/2004	
Acenaphthylene	EPA 8270C	4E19041	6700	ND	20	5/19/2004	5/20/2004	
Aniline	EPA 8270C	4E19041	8300	ND	20	5/19/2004	5/20/2004	
Anthracene	EPA 8270C	4E19041	6700	ND	20	5/19/2004	5/20/2004	
Benzidine	EPA 8270C	4E19041	13000	ND	20	5/19/2004	5/20/2004	
Benzoic acid	EPA 8270C	4E19041	17000	ND	20	5/19/2004	5/20/2004	
Benzo(a)anthracene	EPA 8270C	4E19041	6700	ND	20	5/19/2004	5/20/2004	
Benzo(b)fluoranthene	EPA 8270C	4E19041	6700	ND	20	5/19/2004	5/20/2004	
Benzo(k)fluoranthene	EPA 8270C	4E19041	6700	ND	20	5/19/2004	5/20/2004	
Benzo(g,h,i)perylene	EPA 8270C	4E19041	6700	ND	20	5/19/2004	5/20/2004	
Benzo(a)pyrene	EPA 8270C	4E19041	6700	ND	20	5/19/2004	5/20/2004	
Benzyl alcohol	EPA 8270C	4E19041	6700	ND	20	5/19/2004	5/20/2004	
Bis(2-chloroethoxy)methane	EPA 8270C	4E19041	6700	ND	20	5/19/2004	5/20/2004	
Bis(2-chloroethyl)ether	EPA 8270C	4E19041	3300	ND	20	5/19/2004	5/20/2004	
Bis(2-chloroisopropyl)ether	EPA 8270C	4E19041	6700	ND	20	5/19/2004	5/20/2004	
Bis(2-ethylhexyl)phthalate	EPA 8270C	4E19041	6700	ND	20	5/19/2004	5/20/2004	
4-Bromophenyl phenyl ether	EPA 8270C	4E19041	6700	ND	20	5/19/2004	5/20/2004	
Butyl benzyl phthalate	EPA 8270C	4E19041	6700	ND	20	5/19/2004	5/20/2004	
4-Chloroaniline	EPA 8270C	4E19041	6700	ND	20	5/19/2004	5/20/2004	
2-Chloronaphthalene	EPA 8270C	4E19041	6700	ND	20	5/19/2004	5/20/2004	
4-Chloro-3-methylphenol	EPA 8270C	4E19041	6700	ND	20	5/19/2004	5/20/2004	
2-Chlorophenol	EPA 8270C	4E19041	6700	ND	20	5/19/2004	5/20/2004	
4-Chlorophenyl phenyl ether	EPA 8270C	4E19041	6700	ND	20	5/19/2004	5/20/2004	
Chrysene	EPA 8270C	4E19041	6700	ND	20	5/19/2004	5/20/2004	
Dibenz(a,h)anthracene	EPA 8270C	4E19041	8300	ND	20	5/19/2004	5/20/2004	
Dibenzofuran	EPA 8270C	4E19041	6700	ND	20	5/19/2004	5/20/2004	
Di-n-butyl phthalate	EPA 8270C	4E19041	6700	ND	20	5/19/2004	5/20/2004	
1,3-Dichlorobenzene	EPA 8270C	4E19041	6700	ND	20	5/19/2004	5/20/2004	
1,4-Dichlorobenzene	EPA 8270C	4E19041	6700	ND	20	5/19/2004	5/20/2004	
1,2-Dichlorobenzene	EPA 8270C	4E19041	6700	ND	20	5/19/2004	5/20/2004	
3,3-Dichlorobenzidine	EPA 8270C	4E19041	17000	ND	20	5/19/2004	5/20/2004	
2,4-Dichlorophenol	EPA 8270C	4E19041	6700	ND	20	5/19/2004	5/20/2004	
Diethyl phthalate	EPA 8270C	4E19041	6700	ND	20	5/19/2004	5/20/2004	
2,4-Dimethylphenol	EPA 8270C	4E19041	6700	ND	20	5/19/2004	5/20/2004	
Dimethyl phthalate	EPA 8270C	4E19041	6700	ND	20	5/19/2004	5/20/2004	
4,6-Dinitro-2-methylphenol	EPA 8270C	4E19041	8300	ND	20	5/19/2004	5/20/2004	
2,4-Dinitrophenol	EPA 8270C	4E19041	8300	ND	20	5/19/2004	5/20/2004	
2,4-Dinitrotoluene	EPA 8270C	4E19041	6700	ND	20	5/19/2004	5/20/2004	
2,6-Dinitrotoluene	EPA 8270C	4E19041	6700	ND	20	5/19/2004	5/20/2004	
Di-n-octyl phthalate	EPA 8270C	4E19041	6700	ND	20	5/19/2004	5/20/2004	
Fluoranthene	EPA 8270C	4E19041	6700	ND	20	5/19/2004	5/20/2004	

Del Mar Analytical, Irvine
 Amanda Cordova
 Project Manager



Geosyntec Consultants/Project Navigator - Ascon
2100 Main Street, Suite 150
Huntington Beach, CA 92648
Attention: Mike Reardon

Project ID: Ascon - Soils
SB0202/31
Report Number: INE0765

Sampled: 05/11/04
Received: 05/13/04

SEMI-VOLATILE ORGANICS BY GC/MS (EPA 3545/8270C)

Analyte	Method	Batch	Reporting Limit	Sample Result	Dilution Factor	Date Extracted	Date Analyzed	Data Qualifiers
Sample ID: INE0765-02RE1 (PNL-BA07-Stockpile - Soil) - cont.								RL-2
Reporting Units: ug/kg								
Fluorene	EPA 8270C	4E19041	6700	ND	20	5/19/2004	5/20/2004	
Hexachlorobenzene	EPA 8270C	4E19041	6700	ND	20	5/19/2004	5/20/2004	
Hexachlorobutadiene	EPA 8270C	4E19041	6700	ND	20	5/19/2004	5/20/2004	
Hexachlorocyclopentadiene	EPA 8270C	4E19041	17000	ND	20	5/19/2004	5/20/2004	
Hexachloroethane	EPA 8270C	4E19041	6700	ND	20	5/19/2004	5/20/2004	
Indeno(1,2,3-cd)pyrene	EPA 8270C	4E19041	6700	ND	20	5/19/2004	5/20/2004	
Isophorone	EPA 8270C	4E19041	6700	ND	20	5/19/2004	5/20/2004	
2-Methylnaphthalene	EPA 8270C	4E19041	6700	ND	20	5/19/2004	5/20/2004	
2-Methylphenol	EPA 8270C	4E19041	6700	ND	20	5/19/2004	5/20/2004	
4-Methylphenol	EPA 8270C	4E19041	6700	ND	20	5/19/2004	5/20/2004	
Naphthalene	EPA 8270C	4E19041	6700	ND	20	5/19/2004	5/20/2004	
2-Nitroaniline	EPA 8270C	4E19041	6700	ND	20	5/19/2004	5/20/2004	
3-Nitroaniline	EPA 8270C	4E19041	6700	ND	20	5/19/2004	5/20/2004	
4-Nitroaniline	EPA 8270C	4E19041	17000	ND	20	5/19/2004	5/20/2004	
Nitrobenzene	EPA 8270C	4E19041	6700	ND	20	5/19/2004	5/20/2004	
2-Nitrophenol	EPA 8270C	4E19041	6700	ND	20	5/19/2004	5/20/2004	
4-Nitrophenol	EPA 8270C	4E19041	17000	ND	20	5/19/2004	5/20/2004	
n-Nitrosodiphenylamine	EPA 8270C	4E19041	6700	ND	20	5/19/2004	5/20/2004	
n-Nitroso-di-n-propylamine	EPA 8270C	4E19041	5000	ND	20	5/19/2004	5/20/2004	
Pentachlorophenol	EPA 8270C	4E19041	17000	ND	20	5/19/2004	5/20/2004	
Phenanthrene	EPA 8270C	4E19041	6700	ND	20	5/19/2004	5/20/2004	
Phenol	EPA 8270C	4E19041	6700	ND	20	5/19/2004	5/20/2004	
Pyrene	EPA 8270C	4E19041	6700	ND	20	5/19/2004	5/20/2004	
1,2,4-Trichlorobenzene	EPA 8270C	4E19041	6700	ND	20	5/19/2004	5/20/2004	
2,4,5-Trichlorophenol	EPA 8270C	4E19041	6700	ND	20	5/19/2004	5/20/2004	
2,4,6-Trichlorophenol	EPA 8270C	4E19041	6700	ND	20	5/19/2004	5/20/2004	
1,2-Diphenylhydrazine/Azobenzene	EPA 8270C	4E19041	6700	ND	20	5/19/2004	5/20/2004	
Surrogate: 2-Fluorophenol (25-120%)				81 %				Z3
Surrogate: Phenol-d6 (30-120%)				89 %				Z3
Surrogate: 2,4,6-Tribromophenol (35-120%)				92 %				Z3
Surrogate: Nitrobenzene-d5 (30-120%)				89 %				Z3
Surrogate: 2-Fluorobiphenyl (35-120%)				*				Z3
Surrogate: Terphenyl-d14 (35-155%)				75 %				Z3

Del Mar Analytical, Irvine
Amanda Cordova
Project Manager



Geosyntec Consultants/Project Navigator - Ascon
2100 Main Street, Suite 150
Huntington Beach, CA 92648
Attention: Mike Reardon

Project ID: Ascon - Soils
SB0202/31
Report Number: INE0765

Sampled: 05/11/04
Received: 05/13/04

SEMI-VOLATILE ORGANICS BY GC/MS (EPA 3545/8270C)

Table with 9 columns: Analyte, Method, Batch, Reporting Limit, Sample Result, Dilution Factor, Date Extracted, Date Analyzed, Data Qualifiers. Includes sample ID INE0765-03RE1 and a list of 40 analytes with their respective results (mostly ND).

Del Mar Analytical, Irvine
Amanda Cordova
Project Manager

Geosyntec Consultants/Project Navigator - Ascon
 2100 Main Street, Suite 150
 Huntington Beach, CA 92648
 Attention: Mike Reardon

Project ID: Ascon - Soils
 SB0202/31
 Report Number: INE0765

Sampled: 05/11/04
 Received: 05/13/04

SEMI-VOLATILE ORGANICS BY GC/MS (EPA 3545/8270C)

Analyte	Method	Batch	Reporting Limit	Sample Result	Dilution Factor	Date Extracted	Date Analyzed	Data Qualifiers
Sample ID: INE0765-03RE1 (PNL-BA01-Stockpile - Soil) - cont.								RL-2
Reporting Units: ug/kg								
Fluorene	EPA 8270C	4E19041	6700	ND	20	5/19/2004	5/20/2004	
Hexachlorobenzene	EPA 8270C	4E19041	6700	ND	20	5/19/2004	5/20/2004	
Hexachlorobutadiene	EPA 8270C	4E19041	6700	ND	20	5/19/2004	5/20/2004	
Hexachlorocyclopentadiene	EPA 8270C	4E19041	17000	ND	20	5/19/2004	5/20/2004	
Hexachloroethane	EPA 8270C	4E19041	6700	ND	20	5/19/2004	5/20/2004	
Indeno(1,2,3-cd)pyrene	EPA 8270C	4E19041	6700	ND	20	5/19/2004	5/20/2004	
Isophorone	EPA 8270C	4E19041	6700	ND	20	5/19/2004	5/20/2004	
2-Methylnaphthalene	EPA 8270C	4E19041	6700	ND	20	5/19/2004	5/20/2004	
2-Methylphenol	EPA 8270C	4E19041	6700	ND	20	5/19/2004	5/20/2004	
4-Methylphenol	EPA 8270C	4E19041	6700	ND	20	5/19/2004	5/20/2004	
Naphthalene	EPA 8270C	4E19041	6700	ND	20	5/19/2004	5/20/2004	
2-Nitroaniline	EPA 8270C	4E19041	6700	ND	20	5/19/2004	5/20/2004	
3-Nitroaniline	EPA 8270C	4E19041	6700	ND	20	5/19/2004	5/20/2004	
4-Nitroaniline	EPA 8270C	4E19041	17000	ND	20	5/19/2004	5/20/2004	
Nitrobenzene	EPA 8270C	4E19041	6700	ND	20	5/19/2004	5/20/2004	
2-Nitrophenol	EPA 8270C	4E19041	6700	ND	20	5/19/2004	5/20/2004	
4-Nitrophenol	EPA 8270C	4E19041	17000	ND	20	5/19/2004	5/20/2004	
n-Nitrosodiphenylamine	EPA 8270C	4E19041	6700	ND	20	5/19/2004	5/20/2004	
n-Nitroso-di-n-propylamine	EPA 8270C	4E19041	5000	ND	20	5/19/2004	5/20/2004	
Pentachlorophenol	EPA 8270C	4E19041	17000	ND	20	5/19/2004	5/20/2004	
Phenanthrene	EPA 8270C	4E19041	6700	ND	20	5/19/2004	5/20/2004	
Phenol	EPA 8270C	4E19041	6700	ND	20	5/19/2004	5/20/2004	
Pyrene	EPA 8270C	4E19041	6700	ND	20	5/19/2004	5/20/2004	
1,2,4-Trichlorobenzene	EPA 8270C	4E19041	6700	ND	20	5/19/2004	5/20/2004	
2,4,5-Trichlorophenol	EPA 8270C	4E19041	6700	ND	20	5/19/2004	5/20/2004	
2,4,6-Trichlorophenol	EPA 8270C	4E19041	6700	ND	20	5/19/2004	5/20/2004	
1,2-Diphenylhydrazine/Azobenzene	EPA 8270C	4E19041	6700	ND	20	5/19/2004	5/20/2004	
Surrogate: 2-Fluorophenol (25-120%)				75 %				Z3
Surrogate: Phenol-d6 (30-120%)				84 %				Z3
Surrogate: 2,4,6-Tribromophenol (35-120%)				78 %				Z3
Surrogate: Nitrobenzene-d5 (30-120%)				86 %				Z3
Surrogate: 2-Fluorobiphenyl (35-120%)				*				Z3
Surrogate: Terphenyl-d14 (35-155%)				72 %				Z3

Del Mar Analytical, Irvine
 Amanda Cordova
 Project Manager



Geosyntec Consultants/Project Navigator - Ascon
 2100 Main Street, Suite 150
 Huntington Beach, CA 92648
 Attention: Mike Reardon

Project ID: Ascon - Soils
 SB0202/31
 Report Number: INE0765

Sampled: 05/11/04
 Received: 05/13/04

METALS

Analyte	Method	Batch	Reporting Limit	Sample Result	Dilution Factor	Date Extracted	Date Analyzed	Data Qualifiers
Sample ID: INE0765-01 (PNL-BA08-Stockpile - Soil)								
Reporting Units: mg/kg								
Antimony	EPA 6010B	4E15042	10	ND	1	5/15/2004	5/17/2004	
Arsenic	EPA 6010B	4E15042	2.0	32	1	5/15/2004	5/17/2004	
Barium	EPA 6010B	4E15042	2.0	1600	2	5/15/2004	5/17/2004	
Beryllium	EPA 6010B	4E15042	0.50	ND	1	5/15/2004	5/17/2004	
Cadmium	EPA 6010B	4E15042	0.50	6.8	1	5/15/2004	5/17/2004	
Chromium	EPA 6010B	4E15042	1.0	56	1	5/15/2004	5/17/2004	
Cobalt	EPA 6010B	4E15042	1.0	3.8	1	5/15/2004	5/17/2004	
Copper	EPA 6010B	4E15042	2.0	26	1	5/15/2004	5/17/2004	
Lead	EPA 6010B	4E15042	2.0	780	1	5/15/2004	5/17/2004	
Mercury	EPA 7471A	4E18075	0.020	0.29	1	5/18/2004	5/18/2004	
Molybdenum	EPA 6010B	4E15042	2.0	2.5	1	5/15/2004	5/17/2004	
Nickel	EPA 6010B	4E15042	2.0	32	1	5/15/2004	5/17/2004	
Selenium	EPA 6010B	4E15042	2.0	ND	1	5/15/2004	5/17/2004	
Silver	EPA 6010B	4E15042	1.0	ND	1	5/15/2004	5/17/2004	
Thallium	EPA 6010B	4E15042	10	ND	1	5/15/2004	5/17/2004	
Vanadium	EPA 6010B	4E15042	1.0	27	1	5/15/2004	5/17/2004	
Zinc	EPA 6010B	4E15042	5.0	290	1	5/15/2004	5/17/2004	

Sample ID: INE0765-02 (PNL-BA07-Stockpile - Soil)

Reporting Units: mg/kg

Antimony	EPA 6010B	4E15042	10	ND	1	5/15/2004	5/17/2004	
Arsenic	EPA 6010B	4E15042	2.0	8.3	1	5/15/2004	5/17/2004	
Barium	EPA 6010B	4E15042	2.0	1500	2	5/15/2004	5/17/2004	
Beryllium	EPA 6010B	4E15042	0.50	ND	1	5/15/2004	5/17/2004	
Cadmium	EPA 6010B	4E15042	0.50	0.60	1	5/15/2004	5/17/2004	
Chromium	EPA 6010B	4E15042	1.0	26	1	5/15/2004	5/17/2004	
Cobalt	EPA 6010B	4E15042	1.0	4.1	1	5/15/2004	5/17/2004	
Copper	EPA 6010B	4E15042	2.0	25	1	5/15/2004	5/17/2004	
Lead	EPA 6010B	4E15042	2.0	54	1	5/15/2004	5/17/2004	
Mercury	EPA 7471A	4E18081	0.020	0.12	1	5/18/2004	5/18/2004	
Molybdenum	EPA 6010B	4E15042	2.0	2.2	1	5/15/2004	5/17/2004	
Nickel	EPA 6010B	4E15042	2.0	20	1	5/15/2004	5/17/2004	
Selenium	EPA 6010B	4E15042	2.0	ND	1	5/15/2004	5/17/2004	
Silver	EPA 6010B	4E15042	1.0	ND	1	5/15/2004	5/17/2004	
Thallium	EPA 6010B	4E15042	10	ND	1	5/15/2004	5/17/2004	
Vanadium	EPA 6010B	4E15042	1.0	25	1	5/15/2004	5/17/2004	
Zinc	EPA 6010B	4E15042	5.0	100	1	5/15/2004	5/17/2004	

Del Mar Analytical, Irvine
 Amanda Cordova
 Project Manager



Geosyntec Consultants/Project Navigator - Ascon
 2100 Main Street, Suite 150
 Huntington Beach, CA 92648
 Attention: Mike Reardon

Project ID: Ascon - Soils
 SB0202/31
 Report Number: INE0765

Sampled: 05/11/04
 Received: 05/13/04

METALS

Analyte	Method	Batch	Reporting Limit	Sample Result	Dilution Factor	Date Extracted	Date Analyzed	Data Qualifiers
Sample ID: INE0765-03 (PNL-BA01-Stockpile - Soil)								
Reporting Units: mg/kg								
Antimony	EPA 6010B	4E15042	10	ND	1	5/15/2004	5/17/2004	
Arsenic	EPA 6010B	4E15042	2.0	9.6	1	5/15/2004	5/17/2004	
Barium	EPA 6010B	4E15042	1.0	920	1	5/15/2004	5/17/2004	
Beryllium	EPA 6010B	4E15042	0.50	ND	1	5/15/2004	5/17/2004	
Cadmium	EPA 6010B	4E15042	0.50	0.60	1	5/15/2004	5/17/2004	
Chromium	EPA 6010B	4E15042	1.0	28	1	5/15/2004	5/17/2004	
Cobalt	EPA 6010B	4E15042	1.0	3.9	1	5/15/2004	5/17/2004	
Copper	EPA 6010B	4E15042	2.0	29	1	5/15/2004	5/17/2004	
Lead	EPA 6010B	4E15042	2.0	440	1	5/15/2004	5/17/2004	
Mercury	EPA 7471A	4E18081	0.020	0.077	1	5/18/2004	5/18/2004	
Molybdenum	EPA 6010B	4E15042	2.0	2.2	1	5/15/2004	5/17/2004	
Nickel	EPA 6010B	4E15042	2.0	42	1	5/15/2004	5/17/2004	
Selenium	EPA 6010B	4E15042	2.0	ND	1	5/15/2004	5/17/2004	
Silver	EPA 6010B	4E15042	1.0	ND	1	5/15/2004	5/17/2004	
Thallium	EPA 6010B	4E15042	10	ND	1	5/15/2004	5/17/2004	
Vanadium	EPA 6010B	4E15042	1.0	24	1	5/15/2004	5/17/2004	
Zinc	EPA 6010B	4E15042	5.0	190	1	5/15/2004	5/17/2004	

Del Mar Analytical, Irvine
 Amanda Cordova
 Project Manager



Geosyntec Consultants/Project Navigator - Ascon
 2100 Main Street, Suite 150
 Huntington Beach, CA 92648
 Attention: Mike Reardon

Project ID: Ascon - Soils
 SB0202/31
 Report Number: INE0765

Sampled: 05/11/04
 Received: 05/13/04

INORGANICS

Analyte	Method	Batch	Reporting Limit	Sample Result	Dilution Factor	Date Extracted	Date Analyzed	Data Qualifiers
Sample ID: INE0765-01 (PNL-BA08-Stockpile - Soil)								
Reporting Units: mg/kg								
Chromium VI	EPA 7199	4E19074	0.20	ND	1	5/19/2004	5/20/2004	
Oil & Grease	EPA 413.2 MOD.	4E19094	1500	54000	300	5/19/2004	5/19/2004	
Sample ID: INE0765-01 (PNL-BA08-Stockpile - Soil)								
Reporting Units: N/A								
Ignitability	SW846 7.1.2	4E13092	NA	Not Ignitable	1	5/13/2004	5/13/2004	
Reactivity with water	SW846 7.3.2.1	4E21110	1.0	ND	1	5/21/2004	5/21/2004	
Sample ID: INE0765-01 (PNL-BA08-Stockpile - Soil)								
Reporting Units: pH Units								
pH	EPA 9045C	4E13089	NA	9.85	1	5/13/2004	5/13/2004	
Sample ID: INE0765-02 (PNL-BA07-Stockpile - Soil)								
Reporting Units: mg/kg								
Chromium VI	EPA 7199	4E19074	0.20	ND	1	5/19/2004	5/20/2004	
Oil & Grease	EPA 413.2 MOD.	4E19094	150	5400	30	5/19/2004	5/19/2004	
Sample ID: INE0765-02 (PNL-BA07-Stockpile - Soil)								
Reporting Units: N/A								
Ignitability	SW846 7.1.2	4E13092	NA	Not Ignitable	1	5/13/2004	5/13/2004	
Reactivity with water	SW846 7.3.2.1	4E21110	1.0	ND	1	5/21/2004	5/21/2004	
Sample ID: INE0765-02 (PNL-BA07-Stockpile - Soil)								
Reporting Units: pH Units								
pH	EPA 9045C	4E13089	NA	9.49	1	5/13/2004	5/13/2004	
Sample ID: INE0765-03 (PNL-BA01-Stockpile - Soil)								
Reporting Units: mg/kg								
Chromium VI	EPA 7199	4E19074	0.20	ND	1	5/19/2004	5/20/2004	
Oil & Grease	EPA 413.2 MOD.	4E19094	600	31000	120	5/19/2004	5/19/2004	
Sample ID: INE0765-03 (PNL-BA01-Stockpile - Soil)								
Reporting Units: N/A								
Ignitability	SW846 7.1.2	4E13092	NA	Not Ignitable	1	5/13/2004	5/13/2004	
Reactivity with water	SW846 7.3.2.1	4E21110	1.0	ND	1	5/21/2004	5/21/2004	
Sample ID: INE0765-03 (PNL-BA01-Stockpile - Soil)								
Reporting Units: pH Units								
pH	EPA 9045C	4E13089	NA	10.3	1	5/13/2004	5/13/2004	

Del Mar Analytical, Irvine
 Amanda Cordova
 Project Manager

Geosyntec Consultants/Project Navigator - Ascon
 2100 Main Street, Suite 150
 Huntington Beach, CA 92648
 Attention: Mike Reardon

Project ID: Ascon - Soils
 SB0202/31
 Report Number: INE0765

Sampled: 05/11/04
 Received: 05/13/04

Organochlorine Pesticides by EPA Method 8081A

Analyte	Method	Batch	Reporting Limit	Sample Result	Dilution Factor	Date Extracted	Date Analyzed	Data Qualifiers
Sample ID: INE0765-01 (PNL-BA08-Stockpile - Soil)								C-06, R-05
Reporting Units: ug/kg								
Aldrin	EPA 8081A	4E19004	10	ND	10	5/18/2004	5/19/2004	
alpha-BHC	EPA 8081A	4E19004	10	16	10	5/18/2004	5/19/2004	CF1
beta-BHC	EPA 8081A	4E19004	10	27	10	5/18/2004	5/19/2004	CF1
delta-BHC	EPA 8081A	4E19004	10	ND	10	5/18/2004	5/19/2004	
gamma-BHC (Lindane)	EPA 8081A	4E19004	10	19	10	5/18/2004	5/19/2004	CF1
Chlordane (tech)	EPA 8081A	4E19004	200	ND	10	5/18/2004	5/19/2004	
4,4'-DDD	EPA 8081A	4E19004	60	ND	10	5/18/2004	5/19/2004	
4,4'-DDE	EPA 8081A	4E19004	20	ND	10	5/18/2004	5/19/2004	
4,4'-DDT	EPA 8081A	4E19004	60	ND	10	5/18/2004	5/19/2004	
Dieldrin	EPA 8081A	4E19004	20	ND	10	5/18/2004	5/19/2004	
Endosulfan I	EPA 8081A	4E19004	20	ND	10	5/18/2004	5/19/2004	
Endosulfan II	EPA 8081A	4E19004	20	ND	10	5/18/2004	5/19/2004	
Endosulfan sulfate	EPA 8081A	4E19004	60	ND	10	5/18/2004	5/19/2004	
Endrin	EPA 8081A	4E19004	20	ND	10	5/18/2004	5/19/2004	
Endrin aldehyde	EPA 8081A	4E19004	60	ND	10	5/18/2004	5/19/2004	
Endrin ketone	EPA 8081A	4E19004	60	ND	10	5/18/2004	5/19/2004	
Heptachlor	EPA 8081A	4E19004	10	ND	10	5/18/2004	5/19/2004	
Heptachlor epoxide	EPA 8081A	4E19004	10	ND	10	5/18/2004	5/19/2004	
Methoxychlor	EPA 8081A	4E19004	200	ND	10	5/18/2004	5/19/2004	
Toxaphene	EPA 8081A	4E19004	800	ND	10	5/18/2004	5/19/2004	
<i>Surrogate: Tetrachloro-m-xylene (66-116%)</i>				<i>141 %</i>				<i>S08</i>
<i>Surrogate: Decachlorobiphenyl (42-153%)</i>				<i>27.1 %</i>				<i>S08</i>

Del Mar Analytical, Irvine
 Amanda Cordova
 Project Manager

Geosyntec Consultants/Project Navigator - Ascon
 2100 Main Street, Suite 150
 Huntington Beach, CA 92648
 Attention: Mike Reardon

Project ID: Ascon - Soils
 SB0202/31
 Report Number: INE0765

Sampled: 05/11/04
 Received: 05/13/04

Organochlorine Pesticides by EPA Method 8081A

Analyte	Method	Batch	Reporting Limit	Sample Result	Dilution Factor	Date Extracted	Date Analyzed	Data Qualifiers
Sample ID: INE0765-02 (PNL-BA07-Stockpile - Soil)								C-06, R-05
Reporting Units: ug/kg								
Aldrin	EPA 8081A	4E19004	10	ND	10	5/18/2004	5/19/2004	
alpha-BHC	EPA 8081A	4E19004	10	ND	10	5/18/2004	5/19/2004	
beta-BHC	EPA 8081A	4E19004	10	ND	10	5/18/2004	5/19/2004	
delta-BHC	EPA 8081A	4E19004	10	ND	10	5/18/2004	5/19/2004	
gamma-BHC (Lindane)	EPA 8081A	4E19004	10	16	10	5/18/2004	5/19/2004	CF1
Chlordane (tech)	EPA 8081A	4E19004	200	ND	10	5/18/2004	5/19/2004	
4,4'-DDD	EPA 8081A	4E19004	60	ND	10	5/18/2004	5/19/2004	
4,4'-DDE	EPA 8081A	4E19004	20	ND	10	5/18/2004	5/19/2004	
4,4'-DDT	EPA 8081A	4E19004	60	ND	10	5/18/2004	5/19/2004	
Dieldrin	EPA 8081A	4E19004	20	ND	10	5/18/2004	5/19/2004	
Endosulfan I	EPA 8081A	4E19004	20	ND	10	5/18/2004	5/19/2004	
Endosulfan II	EPA 8081A	4E19004	20	ND	10	5/18/2004	5/19/2004	
Endosulfan sulfate	EPA 8081A	4E19004	60	ND	10	5/18/2004	5/19/2004	
Endrin	EPA 8081A	4E19004	20	ND	10	5/18/2004	5/19/2004	
Endrin aldehyde	EPA 8081A	4E19004	60	ND	10	5/18/2004	5/19/2004	
Endrin ketone	EPA 8081A	4E19004	60	ND	10	5/18/2004	5/19/2004	
Heptachlor	EPA 8081A	4E19004	10	ND	10	5/18/2004	5/19/2004	
Heptachlor epoxide	EPA 8081A	4E19004	10	ND	10	5/18/2004	5/19/2004	
Methoxychlor	EPA 8081A	4E19004	200	ND	10	5/18/2004	5/19/2004	
Toxaphene	EPA 8081A	4E19004	800	ND	10	5/18/2004	5/19/2004	
<i>Surrogate: Tetrachloro-m-xylene (66-116%)</i>				<i>123 %</i>				<i>S08</i>
<i>Surrogate: Decachlorobiphenyl (42-153%)</i>				<i>21.8 %</i>				<i>S08</i>

Del Mar Analytical, Irvine
 Amanda Cordova
 Project Manager

Geosyntec Consultants/Project Navigator - Ascon
 2100 Main Street, Suite 150
 Huntington Beach, CA 92648
 Attention: Mike Reardon

Project ID: Ascon - Soils
 SB0202/31
 Report Number: INE0765

Sampled: 05/11/04
 Received: 05/13/04

Organochlorine Pesticides by EPA Method 8081A

Analyte	Method	Batch	Reporting Limit	Sample Result	Dilution Factor	Date Extracted	Date Analyzed	Data Qualifiers
Sample ID: INE0765-03 (PNL-BA01-Stockpile - Soil)								C-06, R-05
Reporting Units: ug/kg								
Aldrin	EPA 8081A	4E19004	10	ND	10	5/18/2004	5/19/2004	
alpha-BHC	EPA 8081A	4E19004	10	ND	10	5/18/2004	5/19/2004	
beta-BHC	EPA 8081A	4E19004	10	ND	10	5/18/2004	5/19/2004	
delta-BHC	EPA 8081A	4E19004	10	ND	10	5/18/2004	5/19/2004	
gamma-BHC (Lindane)	EPA 8081A	4E19004	10	ND	10	5/18/2004	5/19/2004	
Chlordane (tech)	EPA 8081A	4E19004	200	ND	10	5/18/2004	5/19/2004	
4,4'-DDD	EPA 8081A	4E19004	60	ND	10	5/18/2004	5/19/2004	
4,4'-DDE	EPA 8081A	4E19004	20	ND	10	5/18/2004	5/19/2004	
4,4'-DDT	EPA 8081A	4E19004	60	ND	10	5/18/2004	5/19/2004	
Dieldrin	EPA 8081A	4E19004	20	ND	10	5/18/2004	5/19/2004	
Endosulfan I	EPA 8081A	4E19004	20	ND	10	5/18/2004	5/19/2004	
Endosulfan II	EPA 8081A	4E19004	20	ND	10	5/18/2004	5/19/2004	
Endosulfan sulfate	EPA 8081A	4E19004	60	ND	10	5/18/2004	5/19/2004	
Endrin	EPA 8081A	4E19004	20	ND	10	5/18/2004	5/19/2004	
Endrin aldehyde	EPA 8081A	4E19004	60	ND	10	5/18/2004	5/19/2004	
Endrin ketone	EPA 8081A	4E19004	60	ND	10	5/18/2004	5/19/2004	
Heptachlor	EPA 8081A	4E19004	10	ND	10	5/18/2004	5/19/2004	
Heptachlor epoxide	EPA 8081A	4E19004	10	ND	10	5/18/2004	5/19/2004	
Methoxychlor	EPA 8081A	4E19004	200	ND	10	5/18/2004	5/19/2004	
Toxaphene	EPA 8081A	4E19004	800	ND	10	5/18/2004	5/19/2004	
<i>Surrogate: Tetrachloro-m-xylene (66-116%)</i>				<i>140 %</i>				<i>S08</i>
<i>Surrogate: Decachlorobiphenyl (42-153%)</i>				<i>5.11 %</i>				<i>S08</i>

Del Mar Analytical, Irvine
 Amanda Cordova
 Project Manager

Geosyntec Consultants/Project Navigator - Ascon
 2100 Main Street, Suite 150
 Huntington Beach, CA 92648
 Attention: Mike Reardon

Project ID: Ascon - Soils
 SB0202/31
 Report Number: INE0765

Sampled: 05/11/04
 Received: 05/13/04

Polychlorinated Biphenyls (as Aroclors) by EPA Method 8082

Analyte	Method	Batch	Reporting Limit	Sample Result	Dilution Factor	Date Extracted	Date Analyzed	Data Qualifiers
Sample ID: INE0765-01 (PNL-BA08-Stockpile - Soil)								R-05
Reporting Units: ug/kg								
PCB-1016	EPA 8082	4E18024	200	ND	10	5/18/2004	5/19/2004	C-06
PCB-1221	EPA 8082	4E18024	800	ND	10	5/18/2004	5/19/2004	C-06
PCB-1232	EPA 8082	4E18024	200	ND	10	5/18/2004	5/19/2004	C-06
PCB-1242	EPA 8082	4E18024	200	ND	10	5/18/2004	5/19/2004	C-06
PCB-1248	EPA 8082	4E18024	200	ND	10	5/18/2004	5/19/2004	C-06
PCB-1254	EPA 8082	4E18024	200	ND	10	5/18/2004	5/19/2004	C-06
PCB-1260	EPA 8082	4E18024	200	ND	10	5/18/2004	5/19/2004	C-06
PCB-1268	EPA 8082	4E18024	200	ND	10	5/18/2004	5/19/2004	C-06
<i>Surrogate: Tetrachloro-m-xylene (23-151%)</i>				163 %				C-06, S07
<i>Surrogate: Decachlorobiphenyl (26-142%)</i>				95.5 %				C-06
Sample ID: INE0765-02 (PNL-BA07-Stockpile - Soil)								R-05
Reporting Units: ug/kg								
PCB-1016	EPA 8082	4E18024	200	ND	10	5/18/2004	5/19/2004	C-06
PCB-1221	EPA 8082	4E18024	800	ND	10	5/18/2004	5/19/2004	C-06
PCB-1232	EPA 8082	4E18024	200	ND	10	5/18/2004	5/19/2004	C-06
PCB-1242	EPA 8082	4E18024	200	ND	10	5/18/2004	5/19/2004	C-06
PCB-1248	EPA 8082	4E18024	200	ND	10	5/18/2004	5/19/2004	C-06
PCB-1254	EPA 8082	4E18024	200	ND	10	5/18/2004	5/19/2004	C-06
PCB-1260	EPA 8082	4E18024	200	ND	10	5/18/2004	5/19/2004	C-06
PCB-1268	EPA 8082	4E18024	200	ND	10	5/18/2004	5/19/2004	C-06
<i>Surrogate: Tetrachloro-m-xylene (23-151%)</i>				88.0 %				C-06
<i>Surrogate: Decachlorobiphenyl (26-142%)</i>				78.7 %				C-06
Sample ID: INE0765-03 (PNL-BA01-Stockpile - Soil)								R-05
Reporting Units: ug/kg								
PCB-1016	EPA 8082	4E18024	200	ND	10	5/18/2004	5/19/2004	C-06
PCB-1221	EPA 8082	4E18024	800	ND	10	5/18/2004	5/19/2004	C-06
PCB-1232	EPA 8082	4E18024	200	ND	10	5/18/2004	5/19/2004	C-06
PCB-1242	EPA 8082	4E18024	200	ND	10	5/18/2004	5/19/2004	C-06
PCB-1248	EPA 8082	4E18024	200	ND	10	5/18/2004	5/19/2004	C-06
PCB-1254	EPA 8082	4E18024	200	ND	10	5/18/2004	5/19/2004	C-06
PCB-1260	EPA 8082	4E18024	200	ND	10	5/18/2004	5/19/2004	C-06
PCB-1268	EPA 8082	4E18024	200	ND	10	5/18/2004	5/19/2004	C-06
<i>Surrogate: Tetrachloro-m-xylene (23-151%)</i>				143 %				C-06
<i>Surrogate: Decachlorobiphenyl (26-142%)</i>				96.4 %				C-06

Del Mar Analytical, Irvine
 Amanda Cordova
 Project Manager



Geosyntec Consultants/Project Navigator - Ascon
2100 Main Street, Suite 150
Huntington Beach, CA 92648
Attention: Mike Reardon

Project ID: Ascon - Soils
SB0202/31
Report Number: INE0765

Sampled: 05/11/04
Received: 05/13/04

SHORT HOLD TIME DETAIL REPORT

	Hold Time (in days)	Date/Time Sampled	Date/Time Received	Date/Time Extracted	Date/Time Analyzed
Sample ID: PNL-BA08-Stockpile (INE0765-01) - Soil					
EPA 9045C	1	05/11/2004 11:29	05/13/2004 12:45	05/13/2004 15:30	05/13/2004 16:30
Sample ID: PNL-BA07-Stockpile (INE0765-02) - Soil					
EPA 9045C	1	05/11/2004 15:39	05/13/2004 12:45	05/13/2004 15:30	05/13/2004 16:30
Sample ID: PNL-BA01-Stockpile (INE0765-03) - Soil					
EPA 9045C	1	05/11/2004 15:55	05/13/2004 12:45	05/13/2004 15:30	05/13/2004 16:30

Del Mar Analytical, Irvine
Amanda Cordova
Project Manager



Geosyntec Consultants/Project Navigator - Ascon
2100 Main Street, Suite 150
Huntington Beach, CA 92648
Attention: Mike Reardon

Project ID: Ascon - Soils
SB0202/31
Report Number: INE0765

Sampled: 05/11/04
Received: 05/13/04

METHOD BLANK/QC DATA

TOTAL RECOVERABLE PETROLEUM HYDROCARBONS (EPA 418.1)

Analyte	Result	Reporting Limit	Units	Spike Level	Source Result	%REC %REC	%REC Limits	RPD	RPD Limit	Data Qualifiers
Batch: 4E18059 Extracted: 05/18/04										
Blank Analyzed: 05/18/04 (4E18059-BLK1)										
Total Recoverable Hydrocarbons	ND	5.0	mg/kg							
LCS Analyzed: 05/18/04 (4E18059-BS1)										
Total Recoverable Hydrocarbons	20.2	5.0	mg/kg	20.0		101	55-130			
Matrix Spike Analyzed: 05/18/04 (4E18059-MS1)										
Total Recoverable Hydrocarbons	30300	500	mg/kg	20.0	22000	41500	35-130			M-HA
Matrix Spike Dup Analyzed: 05/18/04 (4E18059-MSD1)										
Total Recoverable Hydrocarbons	19300	500	mg/kg	20.0	22000	-13500	35-130	44	25	M-HA, R-3

Del Mar Analytical, Irvine
Amanda Cordova
Project Manager

Geosyntec Consultants/Project Navigator - Ascon
 2100 Main Street, Suite 150
 Huntington Beach, CA 92648
 Attention: Mike Reardon

Project ID: Ascon - Soils
 SB0202/31
 Report Number: INE0765

Sampled: 05/11/04
 Received: 05/13/04

METHOD BLANK/QC DATA

EXTRACTABLE FUEL HYDROCARBONS (CADHS/8015 Modified)

Analyte	Result	Reporting Limit	Units	Spike Level	Source Result	%REC %REC	%REC Limits	RPD	RPD Limit	Data Qualifiers
Batch: 4E14064 Extracted: 05/14/04										
Blank Analyzed: 05/18/04 (4E14064-BLK1)										
GRO (C6 - C12)	ND	5.0	mg/kg							
DRO/ORO (C13 - C40)	5.70	5.0	mg/kg							B
EFH (C6 - C40)	6.23	5.0	mg/kg							B
Surrogate: n-Octacosane	4.41		mg/kg	6.67		66	50-125			
LCS Analyzed: 05/18/04 (4E14064-BS1)										
EFH (C6 - C40)	24.1	5.0	mg/kg	33.3		72	45-115			
Surrogate: n-Octacosane	3.61		mg/kg	6.67		54	50-125			
Matrix Spike Analyzed: 05/18/04 (4E14064-MS1)					Source: INE0751-02					
EFH (C6 - C40)	46.2	5.0	mg/kg	33.3	15	94	35-115			
Surrogate: n-Octacosane	4.84		mg/kg	6.67		73	50-125			
Matrix Spike Dup Analyzed: 05/18/04 (4E14064-MSD1)					Source: INE0751-02					
EFH (C6 - C40)	44.3	5.0	mg/kg	33.3	15	88	35-115	4	30	
Surrogate: n-Octacosane	4.89		mg/kg	6.67		73	50-125			

Del Mar Analytical, Irvine
 Amanda Cordova
 Project Manager



Geosyntec Consultants/Project Navigator - Ascon
2100 Main Street, Suite 150
Huntington Beach, CA 92648
Attention: Mike Reardon

Project ID: Ascon - Soils
SB0202/31
Report Number: INE0765

Sampled: 05/11/04
Received: 05/13/04

METHOD BLANK/QC DATA

VOLATILE ORGANICS by GC/MS (EPA 5030B/8260B)

Analyte	Result	Reporting Limit	Units	Spike Level	Source Result	%REC %REC	%REC Limits	RPD RPD	RPD Limit	Data Qualifiers
Batch: 4E16013 Extracted: 05/16/04										
Blank Analyzed: 05/16/04 (4E16013-BLK1)										
Benzene	ND	100	ug/kg							
Bromobenzene	ND	250	ug/kg							
Bromochloromethane	ND	250	ug/kg							
Bromodichloromethane	ND	100	ug/kg							
Bromoform	ND	250	ug/kg							
Bromomethane	ND	250	ug/kg							
n-Butylbenzene	ND	250	ug/kg							
sec-Butylbenzene	ND	250	ug/kg							
tert-Butylbenzene	ND	250	ug/kg							
Carbon tetrachloride	ND	250	ug/kg							
Chlorobenzene	ND	100	ug/kg							
Chloroethane	ND	250	ug/kg							
Chloroform	ND	100	ug/kg							
Chloromethane	ND	250	ug/kg							
2-Chlorotoluene	ND	250	ug/kg							
4-Chlorotoluene	ND	250	ug/kg							
Dibromochloromethane	ND	100	ug/kg							
1,2-Dibromo-3-chloropropane	ND	250	ug/kg							
1,2-Dibromoethane (EDB)	ND	100	ug/kg							
Dibromomethane	ND	100	ug/kg							
1,2-Dichlorobenzene	ND	100	ug/kg							
1,3-Dichlorobenzene	ND	100	ug/kg							
1,4-Dichlorobenzene	ND	100	ug/kg							
Dichlorodifluoromethane	ND	250	ug/kg							
1,1-Dichloroethane	ND	100	ug/kg							
1,2-Dichloroethane	ND	100	ug/kg							
1,1-Dichloroethene	ND	250	ug/kg							
cis-1,2-Dichloroethene	ND	100	ug/kg							
trans-1,2-Dichloroethene	ND	100	ug/kg							
1,2-Dichloropropane	ND	100	ug/kg							
1,3-Dichloropropane	ND	100	ug/kg							
2,2-Dichloropropane	ND	100	ug/kg							
1,1-Dichloropropene	ND	100	ug/kg							
cis-1,3-Dichloropropene	ND	100	ug/kg							
trans-1,3-Dichloropropene	ND	100	ug/kg							

Del Mar Analytical, Irvine
Amanda Cordova
Project Manager



Geosyntec Consultants/Project Navigator - Ascon
 2100 Main Street, Suite 150
 Huntington Beach, CA 92648
 Attention: Mike Reardon

Project ID: Ascon - Soils
 SB0202/31
 Report Number: INE0765

Sampled: 05/11/04
 Received: 05/13/04

METHOD BLANK/QC DATA

VOLATILE ORGANICS by GC/MS (EPA 5030B/8260B)

Analyte	Result	Reporting Limit	Units	Spike Level	Source Result	%REC %REC	%REC Limits	RPD RPD	RPD Limit	Data Qualifiers
Batch: 4E16013 Extracted: 05/16/04										
Blank Analyzed: 05/16/04 (4E16013-BLK1)										
Ethylbenzene	ND	100	ug/kg							
Hexachlorobutadiene	ND	250	ug/kg							
Isopropylbenzene	ND	100	ug/kg							
p-Isopropyltoluene	ND	100	ug/kg							
Methylene chloride	ND	1000	ug/kg							
Naphthalene	ND	250	ug/kg							
n-Propylbenzene	ND	100	ug/kg							
Styrene	ND	100	ug/kg							
1,1,1,2-Tetrachloroethane	ND	250	ug/kg							
1,1,2,2-Tetrachloroethane	ND	100	ug/kg							
Tetrachloroethene	ND	100	ug/kg							
Toluene	ND	100	ug/kg							
1,2,3-Trichlorobenzene	ND	250	ug/kg							
1,2,4-Trichlorobenzene	ND	250	ug/kg							
1,1,1-Trichloroethane	ND	100	ug/kg							
1,1,2-Trichloroethane	ND	100	ug/kg							
Trichloroethene	ND	100	ug/kg							
Trichlorofluoromethane	ND	250	ug/kg							
1,2,3-Trichloropropane	ND	500	ug/kg							
1,2,4-Trimethylbenzene	ND	100	ug/kg							
1,3,5-Trimethylbenzene	ND	100	ug/kg							
Vinyl chloride	ND	250	ug/kg							
o-Xylene	ND	100	ug/kg							
m,p-Xylenes	ND	100	ug/kg							
Surrogate: Dibromofluoromethane	2610		ug/kg	2500		104	50-160			
Surrogate: Toluene-d8	2570		ug/kg	2500		103	60-160			
Surrogate: 4-Bromofluorobenzene	2540		ug/kg	2500		102	60-150			

Del Mar Analytical, Irvine
 Amanda Cordova
 Project Manager

Geosyntec Consultants/Project Navigator - Ascon
 2100 Main Street, Suite 150
 Huntington Beach, CA 92648
 Attention: Mike Reardon

Project ID: Ascon - Soils
 SB0202/31
 Report Number: INE0765

Sampled: 05/11/04
 Received: 05/13/04

METHOD BLANK/QC DATA

VOLATILE ORGANICS by GC/MS (EPA 5030B/8260B)

Analyte	Result	Reporting Limit	Units	Spike Level	Source Result	%REC %REC	%REC Limits	RPD	RPD Limit	Data Qualifiers
Batch: 4E16013 Extracted: 05/16/04										
LCS Analyzed: 05/16/04 (4E16013-BS1)										
Benzene	2280	100	ug/kg	2500		91	75-125			
Bromobenzene	2160	250	ug/kg	2500		86	80-120			
Bromochloromethane	2530	250	ug/kg	2500		101	65-140			
Bromodichloromethane	2420	100	ug/kg	2500		97	70-140			
Bromoform	2100	250	ug/kg	2500		84	60-130			
Bromomethane	1950	250	ug/kg	2500		78	35-140			
n-Butylbenzene	2420	250	ug/kg	2500		97	80-130			
sec-Butylbenzene	2230	250	ug/kg	2500		89	75-125			
tert-Butylbenzene	2160	250	ug/kg	2500		86	80-125			
Carbon tetrachloride	2180	250	ug/kg	2500		87	70-140			
Chlorobenzene	2320	100	ug/kg	2500		93	80-125			
Chloroethane	2000	250	ug/kg	2500		80	40-145			
Chloroform	2430	100	ug/kg	2500		97	75-130			
Chloromethane	1320	250	ug/kg	2500		53	30-145			
2-Chlorotoluene	2140	250	ug/kg	2500		86	75-125			
4-Chlorotoluene	2260	250	ug/kg	2500		90	80-125			
Dibromochloromethane	2280	100	ug/kg	2500		91	65-145			
1,2-Dibromo-3-chloropropane	1790	250	ug/kg	2500		72	45-135			
1,2-Dibromoethane (EDB)	2160	100	ug/kg	2500		86	75-130			
Dibromomethane	2260	100	ug/kg	2500		90	75-135			
1,2-Dichlorobenzene	2340	100	ug/kg	2500		94	80-120			
1,3-Dichlorobenzene	2270	100	ug/kg	2500		91	80-120			
1,4-Dichlorobenzene	2300	100	ug/kg	2500		92	80-120			
Dichlorodifluoromethane	815	250	ug/kg	2500		33	10-160			
1,1-Dichloroethane	2370	100	ug/kg	2500		95	70-135			
1,2-Dichloroethane	2360	100	ug/kg	2500		94	60-150			
1,1-Dichloroethene	2110	250	ug/kg	2500		84	80-145			
cis-1,2-Dichloroethene	2410	100	ug/kg	2500		96	70-135			
trans-1,2-Dichloroethene	2280	100	ug/kg	2500		91	70-135			
1,2-Dichloropropane	2430	100	ug/kg	2500		97	75-125			
1,3-Dichloropropane	2220	100	ug/kg	2500		89	75-130			
2,2-Dichloropropane	2330	100	ug/kg	2500		93	70-150			
1,1-Dichloropropene	2170	100	ug/kg	2500		87	75-130			
cis-1,3-Dichloropropene	2430	100	ug/kg	2500		97	75-130			
trans-1,3-Dichloropropene	2490	100	ug/kg	2500		100	75-135			

Del Mar Analytical, Irvine
 Amanda Cordova
 Project Manager



Geosyntec Consultants/Project Navigator - Ascon
2100 Main Street, Suite 150
Huntington Beach, CA 92648
Attention: Mike Reardon

Project ID: Ascon - Soils
SB0202/31
Report Number: INE0765

Sampled: 05/11/04
Received: 05/13/04

METHOD BLANK/QC DATA

VOLATILE ORGANICS by GC/MS (EPA 5030B/8260B)

Analyte	Result	Reporting Limit	Units	Spike Level	Source Result	%REC %REC	%REC Limits	RPD	RPD Limit	Data Qualifiers
Batch: 4E16013 Extracted: 05/16/04										
LCS Analyzed: 05/16/04 (4E16013-BS1)										
Ethylbenzene	2280	100	ug/kg	2500		91	80-120			
Hexachlorobutadiene	2490	250	ug/kg	2500		100	75-140			
Isopropylbenzene	2150	100	ug/kg	2500		86	75-125			
p-Isopropyltoluene	2240	100	ug/kg	2500		90	80-125			
Methylene chloride	2160	1000	ug/kg	2500		86	60-145			
Naphthalene	2450	250	ug/kg	2500		98	50-145			
n-Propylbenzene	2210	100	ug/kg	2500		88	75-130			
Styrene	2550	100	ug/kg	2500		102	80-135			
1,1,1,2-Tetrachloroethane	2290	250	ug/kg	2500		92	70-145			
1,1,2,2-Tetrachloroethane	1900	100	ug/kg	2500		76	60-135			
Tetrachloroethene	2090	100	ug/kg	2500		84	80-125			
Toluene	2320	100	ug/kg	2500		93	80-125			
1,2,3-Trichlorobenzene	2910	250	ug/kg	2500		116	65-135			
1,2,4-Trichlorobenzene	3020	250	ug/kg	2500		121	70-140			
1,1,1-Trichloroethane	2340	100	ug/kg	2500		94	75-140			
1,1,2-Trichloroethane	2290	100	ug/kg	2500		92	70-130			
Trichloroethene	2310	100	ug/kg	2500		92	80-130			
Trichlorofluoromethane	1990	250	ug/kg	2500		80	55-145			
1,2,3-Trichloropropane	1790	500	ug/kg	2500		72	60-130			
1,2,4-Trimethylbenzene	2290	100	ug/kg	2500		92	80-125			
1,3,5-Trimethylbenzene	2250	100	ug/kg	2500		90	80-125			
Vinyl chloride	507	250	ug/kg	2500		20	10-120			
o-Xylene	2300	100	ug/kg	2500		92	80-125			
m,p-Xylenes	4620	100	ug/kg	5000		92	80-120			
Surrogate: Dibromofluoromethane	2800		ug/kg	2500		112	50-160			
Surrogate: Toluene-d8	2590		ug/kg	2500		104	60-160			
Surrogate: 4-Bromofluorobenzene	2650		ug/kg	2500		106	60-150			

Del Mar Analytical, Irvine
Amanda Cordova
Project Manager

Geosyntec Consultants/Project Navigator - Ascon
 2100 Main Street, Suite 150
 Huntington Beach, CA 92648
 Attention: Mike Reardon

Project ID: Ascon - Soils
 SB0202/31
 Report Number: INE0765

Sampled: 05/11/04
 Received: 05/13/04

METHOD BLANK/QC DATA

VOLATILE ORGANICS by GC/MS (EPA 5030B/8260B)

Analyte	Result	Reporting Limit	Units	Spike Level	Source Result	%REC %REC	%REC Limits	RPD	RPD Limit	Data Qualifiers
Batch: 4E16013 Extracted: 05/16/04										
LCS Dup Analyzed: 05/16/04 (4E16013-BSD1)										
Benzene	2360	100	ug/kg	2500		94	75-125	3	20	
Bromobenzene	2270	250	ug/kg	2500		91	80-120	5	20	
Bromochloromethane	2590	250	ug/kg	2500		104	65-140	2	20	
Bromodichloromethane	2380	100	ug/kg	2500		95	70-140	2	20	
Bromoform	2270	250	ug/kg	2500		91	60-130	8	25	
Bromomethane	1910	250	ug/kg	2500		76	35-140	2	30	
n-Butylbenzene	2480	250	ug/kg	2500		99	80-130	2	20	
sec-Butylbenzene	2290	250	ug/kg	2500		92	75-125	3	20	
tert-Butylbenzene	2260	250	ug/kg	2500		90	80-125	5	20	
Carbon tetrachloride	2170	250	ug/kg	2500		87	70-140	1	20	
Chlorobenzene	2410	100	ug/kg	2500		96	80-125	4	20	
Chloroethane	1980	250	ug/kg	2500		79	40-145	1	25	
Chloroform	2420	100	ug/kg	2500		97	75-130	0	20	
Chloromethane	1340	250	ug/kg	2500		54	30-145	2	25	
2-Chlorotoluene	2260	250	ug/kg	2500		90	75-125	5	20	
4-Chlorotoluene	2330	250	ug/kg	2500		93	80-125	3	20	
Dibromochloromethane	2370	100	ug/kg	2500		95	65-145	4	20	
1,2-Dibromo-3-chloropropane	1780	250	ug/kg	2500		71	45-135	1	25	
1,2-Dibromoethane (EDB)	2300	100	ug/kg	2500		92	75-130	6	20	
Dibromomethane	2240	100	ug/kg	2500		90	75-135	1	20	
1,2-Dichlorobenzene	2350	100	ug/kg	2500		94	80-120	0	20	
1,3-Dichlorobenzene	2320	100	ug/kg	2500		93	80-120	2	20	
1,4-Dichlorobenzene	2330	100	ug/kg	2500		93	80-120	1	20	
Dichlorodifluoromethane	744	250	ug/kg	2500		30	10-160	9	30	
1,1-Dichloroethane	2400	100	ug/kg	2500		96	70-135	1	20	
1,2-Dichloroethane	2320	100	ug/kg	2500		93	60-150	2	25	
1,1-Dichloroethene	2100	250	ug/kg	2500		84	80-145	1	20	
cis-1,2-Dichloroethene	2420	100	ug/kg	2500		97	70-135	0	20	
trans-1,2-Dichloroethene	2360	100	ug/kg	2500		94	70-135	3	20	
1,2-Dichloropropane	2440	100	ug/kg	2500		98	75-125	0	20	
1,3-Dichloropropane	2370	100	ug/kg	2500		95	75-130	7	20	
2,2-Dichloropropane	2270	100	ug/kg	2500		91	70-150	3	20	
1,1-Dichloropropene	2210	100	ug/kg	2500		88	75-130	2	20	
cis-1,3-Dichloropropene	2460	100	ug/kg	2500		98	75-130	1	20	
trans-1,3-Dichloropropene	2500	100	ug/kg	2500		100	75-135	0	20	

Del Mar Analytical, Irvine
 Amanda Cordova
 Project Manager



Geosyntec Consultants/Project Navigator - Ascon
2100 Main Street, Suite 150
Huntington Beach, CA 92648
Attention: Mike Reardon

Project ID: Ascon - Soils
SB0202/31
Report Number: INE0765

Sampled: 05/11/04
Received: 05/13/04

METHOD BLANK/QC DATA

VOLATILE ORGANICS by GC/MS (EPA 5030B/8260B)

Analyte	Result	Reporting Limit	Units	Spike Level	Source Result	%REC %REC	%REC Limits	RPD	RPD Limit	Data Qualifiers
Batch: 4E16013 Extracted: 05/16/04										
LCS Dup Analyzed: 05/16/04 (4E16013-BSD1)										
Ethylbenzene	2420	100	ug/kg	2500		97	80-120	6	20	
Hexachlorobutadiene	2400	250	ug/kg	2500		96	75-140	4	20	
Isopropylbenzene	2290	100	ug/kg	2500		92	75-125	6	20	
p-Isopropyltoluene	2280	100	ug/kg	2500		91	80-125	2	20	
Methylene chloride	2180	1000	ug/kg	2500		87	60-145	1	20	
Naphthalene	2390	250	ug/kg	2500		96	50-145	2	25	
n-Propylbenzene	2320	100	ug/kg	2500		93	75-130	5	20	
Styrene	2630	100	ug/kg	2500		105	80-135	3	20	
1,1,1,2-Tetrachloroethane	2420	250	ug/kg	2500		97	70-145	6	20	
1,1,2,2-Tetrachloroethane	2000	100	ug/kg	2500		80	60-135	5	25	
Tetrachloroethene	2270	100	ug/kg	2500		91	80-125	8	20	
Toluene	2350	100	ug/kg	2500		94	80-125	1	20	
1,2,3-Trichlorobenzene	2770	250	ug/kg	2500		111	65-135	5	20	
1,2,4-Trichlorobenzene	2920	250	ug/kg	2500		117	70-140	3	20	
1,1,1-Trichloroethane	2280	100	ug/kg	2500		91	75-140	3	20	
1,1,2-Trichloroethane	2400	100	ug/kg	2500		96	70-130	5	20	
Trichloroethene	2360	100	ug/kg	2500		94	80-130	2	20	
Trichlorofluoromethane	1920	250	ug/kg	2500		77	55-145	4	25	
1,2,3-Trichloropropane	1910	500	ug/kg	2500		76	60-130	6	20	
1,2,4-Trimethylbenzene	2360	100	ug/kg	2500		94	80-125	3	20	
1,3,5-Trimethylbenzene	2350	100	ug/kg	2500		94	80-125	4	20	
Vinyl chloride	504	250	ug/kg	2500		20	10-120	1	30	
o-Xylene	2450	100	ug/kg	2500		98	80-125	6	20	
m,p-Xylenes	4840	100	ug/kg	5000		97	80-120	5	20	
Surrogate: Dibromofluoromethane	2750		ug/kg	2500		110	50-160			
Surrogate: Toluene-d8	2630		ug/kg	2500		105	60-160			
Surrogate: 4-Bromofluorobenzene	2700		ug/kg	2500		108	60-150			

Del Mar Analytical, Irvine
Amanda Cordova
Project Manager



Geosyntec Consultants/Project Navigator - Ascon
2100 Main Street, Suite 150
Huntington Beach, CA 92648
Attention: Mike Reardon

Project ID: Ascon - Soils
SB0202/31
Report Number: INE0765

Sampled: 05/11/04
Received: 05/13/04

METHOD BLANK/QC DATA

VOLATILE ORGANICS by GC/MS (EPA 5030B/8260B)

Analyte	Result	Reporting Limit	Units	Spike Level	Source Result	%REC	%REC Limits	RPD	RPD Limit	Data Qualifiers
Batch: 4E16013 Extracted: 05/16/04										
Matrix Spike Analyzed: 05/18/04 (4E16013-MS1)					Source: INE0764-03					
Benzene	2080	100	ug/kg	2500	160	77	60-140			
Bromobenzene	2140	250	ug/kg	2500	ND	86	65-130			
Bromochloromethane	2400	250	ug/kg	2500	ND	96	60-145			
Bromodichloromethane	2150	100	ug/kg	2500	ND	86	65-150			
Bromoform	2490	250	ug/kg	2500	ND	100	55-150			
Bromomethane	1290	250	ug/kg	2500	ND	52	30-160			
n-Butylbenzene	2520	250	ug/kg	2500	1800	29	60-150			M2
sec-Butylbenzene	2340	250	ug/kg	2500	1300	42	65-145			M2
tert-Butylbenzene	2150	250	ug/kg	2500	67	83	60-150			
Carbon tetrachloride	2140	250	ug/kg	2500	ND	86	70-140			
Chlorobenzene	2220	100	ug/kg	2500	ND	89	70-140			
Chloroethane	1570	250	ug/kg	2500	ND	63	30-170			
Chloroform	2100	100	ug/kg	2500	ND	84	60-140			
Chloromethane	1250	250	ug/kg	2500	ND	50	30-160			
2-Chlorotoluene	2390	250	ug/kg	2500	ND	96	60-140			
4-Chlorotoluene	2190	250	ug/kg	2500	ND	88	70-135			
Dibromochloromethane	2160	100	ug/kg	2500	ND	86	60-150			
1,2-Dibromo-3-chloropropane	3440	250	ug/kg	2500	ND	138	40-150			
1,2-Dibromoethane (EDB)	2240	100	ug/kg	2500	ND	90	65-140			
Dibromomethane	2230	100	ug/kg	2500	ND	89	65-140			
1,2-Dichlorobenzene	2090	100	ug/kg	2500	ND	84	70-130			
1,3-Dichlorobenzene	2050	100	ug/kg	2500	ND	82	60-155			
1,4-Dichlorobenzene	2090	100	ug/kg	2500	ND	84	55-150			
Dichlorodifluoromethane	719	250	ug/kg	2500	ND	29	10-160			
1,1-Dichloroethane	2080	100	ug/kg	2500	ND	83	60-155			
1,2-Dichloroethane	2100	100	ug/kg	2500	ND	84	55-150			
1,1-Dichloroethene	2090	250	ug/kg	2500	ND	84	60-165			
cis-1,2-Dichloroethene	2080	100	ug/kg	2500	ND	83	60-135			
trans-1,2-Dichloroethene	2090	100	ug/kg	2500	ND	84	50-155			
1,2-Dichloropropane	2240	100	ug/kg	2500	ND	90	65-135			
1,3-Dichloropropane	2120	100	ug/kg	2500	ND	85	65-135			
2,2-Dichloropropane	2070	100	ug/kg	2500	ND	83	60-150			
1,1-Dichloropropene	2160	100	ug/kg	2500	ND	86	60-140			
cis-1,3-Dichloropropene	2280	100	ug/kg	2500	ND	91	60-135			
trans-1,3-Dichloropropene	2470	100	ug/kg	2500	ND	99	55-155			

Del Mar Analytical, Irvine
Amanda Cordova
Project Manager



Geosyntec Consultants/Project Navigator - Ascon
2100 Main Street, Suite 150
Huntington Beach, CA 92648
Attention: Mike Reardon

Project ID: Ascon - Soils
SB0202/31
Report Number: INE0765

Sampled: 05/11/04
Received: 05/13/04

METHOD BLANK/QC DATA

VOLATILE ORGANICS by GC/MS (EPA 5030B/8260B)

Analyte	Result	Reporting Limit	Units	Spike Level	Source Result	%REC	%REC Limits	RPD	RPD Limit	Data Qualifiers
Batch: 4E16013 Extracted: 05/16/04										
Matrix Spike Analyzed: 05/18/04 (4E16013-MS1)					Source: INE0764-03					
Ethylbenzene	2680	100	ug/kg	2500	1600	43	60-140			M2
Hexachlorobutadiene	1770	250	ug/kg	2500	ND	71	65-145			
Isopropylbenzene	2690	100	ug/kg	2500	1700	40	60-140			M2
p-Isopropyltoluene	2200	100	ug/kg	2500	1200	40	60-145			M2
Methylene chloride	2120	1000	ug/kg	2500	ND	85	50-155			
Naphthalene	3700	250	ug/kg	2500	4800	-44	30-165			M2
n-Propylbenzene	3140	100	ug/kg	2500	3200	-2	60-145			M2
Styrene	2250	100	ug/kg	2500	73	87	60-145			
1,1,1,2-Tetrachloroethane	2200	250	ug/kg	2500	ND	88	65-145			
1,1,2,2-Tetrachloroethane	2290	100	ug/kg	2500	ND	92	60-150			
Tetrachloroethene	2010	100	ug/kg	2500	ND	80	65-145			
Toluene	2500	100	ug/kg	2500	1300	48	60-145			M2
1,2,3-Trichlorobenzene	1980	250	ug/kg	2500	ND	79	45-145			
1,2,4-Trichlorobenzene	1980	250	ug/kg	2500	ND	79	60-140			
1,1,1-Trichloroethane	2040	100	ug/kg	2500	ND	82	65-140			
1,1,2-Trichloroethane	2340	100	ug/kg	2500	ND	94	60-140			
Trichloroethene	2180	100	ug/kg	2500	ND	87	70-150			
Trichlorofluoromethane	1770	250	ug/kg	2500	ND	71	35-165			
1,2,3-Trichloropropane	2140	500	ug/kg	2500	ND	86	50-150			
1,2,4-Trimethylbenzene	4610	100	ug/kg	2500	8500	-156	70-135			M2
1,3,5-Trimethylbenzene	3160	100	ug/kg	2500	4100	-38	70-135			M2
Vinyl chloride	401	250	ug/kg	2500	ND	16	10-120			
o-Xylene	3000	100	ug/kg	2500	3100	-4	60-145			M2
m,p-Xylenes	5270	100	ug/kg	5000	3500	35	60-140			M2
Surrogate: Dibromofluoromethane	2410		ug/kg	2500		96	50-160			
Surrogate: Toluene-d8	2580		ug/kg	2500		103	60-160			
Surrogate: 4-Bromofluorobenzene	2510		ug/kg	2500		100	60-150			

Del Mar Analytical, Irvine
Amanda Cordova
Project Manager



Geosyntec Consultants/Project Navigator - Ascon
2100 Main Street, Suite 150
Huntington Beach, CA 92648
Attention: Mike Reardon

Project ID: Ascon - Soils
SB0202/31
Report Number: INE0765

Sampled: 05/11/04
Received: 05/13/04

METHOD BLANK/QC DATA

VOLATILE ORGANICS by GC/MS (EPA 5030B/8260B)

Analyte	Result	Reporting Limit	Units	Spike Level	Source Result	%REC %REC	%REC Limits	RPD	RPD Limit	Data Qualifiers
Batch: 4E16013 Extracted: 05/16/04										
Matrix Spike Dup Analyzed: 05/18/04 (4E16013-MSD1)					Source: INE0764-03					
Benzene	2080	100	ug/kg	2500	160	77	60-140	0	25	
Bromobenzene	2090	250	ug/kg	2500	ND	84	65-130	2	25	
Bromochloromethane	2270	250	ug/kg	2500	ND	91	60-145	6	25	
Bromodichloromethane	2180	100	ug/kg	2500	ND	87	65-150	1	25	
Bromoform	2460	250	ug/kg	2500	ND	98	55-150	1	30	
Bromomethane	1230	250	ug/kg	2500	ND	49	30-160	5	30	
n-Butylbenzene	2900	250	ug/kg	2500	1800	44	60-150	14	25	M2
sec-Butylbenzene	2590	250	ug/kg	2500	1300	52	65-145	10	25	M2
tert-Butylbenzene	2100	250	ug/kg	2500	67	81	60-150	2	20	
Carbon tetrachloride	2070	250	ug/kg	2500	ND	83	70-140	3	20	
Chlorobenzene	2200	100	ug/kg	2500	ND	88	70-140	1	25	
Chloroethane	1480	250	ug/kg	2500	ND	59	30-170	6	35	
Chloroform	2060	100	ug/kg	2500	ND	82	60-140	2	25	
Chloromethane	1220	250	ug/kg	2500	ND	49	30-160	2	30	
2-Chlorotoluene	2660	250	ug/kg	2500	ND	106	60-140	11	25	
4-Chlorotoluene	2280	250	ug/kg	2500	ND	91	70-135	4	20	
Dibromochloromethane	2060	100	ug/kg	2500	ND	82	60-150	5	25	
1,2-Dibromo-3-chloropropane	2500	250	ug/kg	2500	ND	100	40-150	32	30	R
1,2-Dibromoethane (EDB)	2140	100	ug/kg	2500	ND	86	65-140	5	25	
Dibromomethane	2150	100	ug/kg	2500	ND	86	65-140	4	20	
1,2-Dichlorobenzene	2020	100	ug/kg	2500	ND	81	70-130	3	20	
1,3-Dichlorobenzene	1960	100	ug/kg	2500	ND	78	60-155	4	25	
1,4-Dichlorobenzene	2060	100	ug/kg	2500	ND	82	55-150	1	25	
Dichlorodifluoromethane	694	250	ug/kg	2500	ND	28	10-160	4	35	
1,1-Dichloroethane	2050	100	ug/kg	2500	ND	82	60-155	1	25	
1,2-Dichloroethane	2040	100	ug/kg	2500	ND	82	55-150	3	30	
1,1-Dichloroethene	2000	250	ug/kg	2500	ND	80	60-165	4	25	
cis-1,2-Dichloroethene	2030	100	ug/kg	2500	ND	81	60-135	2	25	
trans-1,2-Dichloroethene	2020	100	ug/kg	2500	ND	81	50-155	3	25	
1,2-Dichloropropane	2180	100	ug/kg	2500	ND	87	65-135	3	20	
1,3-Dichloropropane	2020	100	ug/kg	2500	ND	81	65-135	5	20	
2,2-Dichloropropane	1990	100	ug/kg	2500	ND	80	60-150	4	20	
1,1-Dichloropropene	2100	100	ug/kg	2500	ND	84	60-140	3	20	
cis-1,3-Dichloropropene	2200	100	ug/kg	2500	ND	88	60-135	4	25	
trans-1,3-Dichloropropene	2480	100	ug/kg	2500	ND	99	55-155	0	25	

Del Mar Analytical, Irvine
Amanda Cordova
Project Manager



Geosyntec Consultants/Project Navigator - Ascon
2100 Main Street, Suite 150
Huntington Beach, CA 92648
Attention: Mike Reardon

Project ID: Ascon - Soils
SB0202/31
Report Number: INE0765

Sampled: 05/11/04
Received: 05/13/04

METHOD BLANK/QC DATA

VOLATILE ORGANICS by GC/MS (EPA 5030B/8260B)

Analyte	Result	Reporting Limit	Units	Spike Level	Source Result	%REC	%REC Limits	RPD	RPD Limit	Data Qualifiers
Batch: 4E16013 Extracted: 05/16/04										
Matrix Spike Dup Analyzed: 05/18/04 (4E16013-MSD1)					Source: INE0764-03					
Ethylbenzene	3060	100	ug/kg	2500	1600	58	60-140	13	25	M2
Hexachlorobutadiene	1610	250	ug/kg	2500	ND	64	65-145	9	25	M2
Isopropylbenzene	3150	100	ug/kg	2500	1700	58	60-140	16	25	M2
p-Isopropyltoluene	2440	100	ug/kg	2500	1200	50	60-145	10	25	M2
Methylene chloride	2010	1000	ug/kg	2500	ND	80	50-155	5	25	
Naphthalene	4920	250	ug/kg	2500	4800	5	30-165	28	30	M2
n-Propylbenzene	4030	100	ug/kg	2500	3200	33	60-145	25	25	M2
Styrene	2190	100	ug/kg	2500	73	85	60-145	3	20	
1,1,1,2-Tetrachloroethane	2150	250	ug/kg	2500	ND	86	65-145	2	20	
1,1,2,2-Tetrachloroethane	2140	100	ug/kg	2500	ND	86	60-150	7	20	
Tetrachloroethene	1960	100	ug/kg	2500	ND	78	65-145	3	25	
Toluene	2990	100	ug/kg	2500	1300	68	60-145	18	25	
1,2,3-Trichlorobenzene	1830	250	ug/kg	2500	ND	73	45-145	8	30	
1,2,4-Trichlorobenzene	1860	250	ug/kg	2500	ND	74	60-140	6	25	
1,1,1-Trichloroethane	2010	100	ug/kg	2500	ND	80	65-140	1	25	
1,1,2-Trichloroethane	2320	100	ug/kg	2500	ND	93	60-140	1	20	
Trichloroethene	2140	100	ug/kg	2500	ND	86	70-150	2	25	
Trichlorofluoromethane	1690	250	ug/kg	2500	ND	68	35-165	5	30	
1,2,3-Trichloropropane	2030	500	ug/kg	2500	ND	81	50-150	5	20	
1,2,4-Trimethylbenzene	7140	100	ug/kg	2500	8500	-54	70-135	43	20	M2
1,3,5-Trimethylbenzene	4280	100	ug/kg	2500	4100	7	70-135	30	25	M2
Vinyl chloride	377	250	ug/kg	2500	ND	15	10-120	6	35	
o-Xylene	3820	100	ug/kg	2500	3100	29	60-145	24	25	M2
m,p-Xylenes	6150	100	ug/kg	5000	3500	53	60-140	15	25	M2
Surrogate: Dibromofluoromethane	2270		ug/kg	2500		91	50-160			
Surrogate: Toluene-d8	2470		ug/kg	2500		99	60-160			
Surrogate: 4-Bromofluorobenzene	2330		ug/kg	2500		93	60-150			

Del Mar Analytical, Irvine
Amanda Cordova
Project Manager



Geosyntec Consultants/Project Navigator - Ascon
2100 Main Street, Suite 150
Huntington Beach, CA 92648
Attention: Mike Reardon

Project ID: Ascon - Soils
SB0202/31
Report Number: INE0765

Sampled: 05/11/04
Received: 05/13/04

METHOD BLANK/QC DATA

SEMI-VOLATILE ORGANICS BY GC/MS (EPA 3545/8270C)

Analyte	Result	Reporting Limit	Units	Spike Level	Source Result	%REC %REC	RPD RPD	RPD Limit	Data Qualifiers
Batch: 4E19041 Extracted: 05/19/04									
Blank Analyzed: 05/20/04 (4E19041-BLK1)									
Acenaphthene	ND	330	ug/kg						
Acenaphthylene	ND	330	ug/kg						
Aniline	ND	420	ug/kg						
Anthracene	ND	330	ug/kg						
Benzidine	ND	660	ug/kg						
Benzoic acid	ND	830	ug/kg						
Benzo(a)anthracene	ND	330	ug/kg						
Benzo(b)fluoranthene	ND	330	ug/kg						
Benzo(k)fluoranthene	ND	330	ug/kg						
Benzo(g,h,i)perylene	ND	330	ug/kg						
Benzo(a)pyrene	ND	330	ug/kg						
Benzyl alcohol	ND	330	ug/kg						
Bis(2-chloroethoxy)methane	ND	330	ug/kg						
Bis(2-chloroethyl)ether	ND	170	ug/kg						
Bis(2-chloroisopropyl)ether	ND	330	ug/kg						
Bis(2-ethylhexyl)phthalate	ND	330	ug/kg						
4-Bromophenyl phenyl ether	ND	330	ug/kg						
Butyl benzyl phthalate	ND	330	ug/kg						
4-Chloroaniline	ND	330	ug/kg						
2-Chloronaphthalene	ND	330	ug/kg						
4-Chloro-3-methylphenol	ND	330	ug/kg						
2-Chlorophenol	ND	330	ug/kg						
4-Chlorophenyl phenyl ether	ND	330	ug/kg						
Chrysene	ND	330	ug/kg						
Dibenz(a,h)anthracene	ND	420	ug/kg						
Dibenzofuran	ND	330	ug/kg						
Di-n-butyl phthalate	ND	330	ug/kg						
1,3-Dichlorobenzene	ND	330	ug/kg						
1,4-Dichlorobenzene	ND	330	ug/kg						
1,2-Dichlorobenzene	ND	330	ug/kg						
3,3-Dichlorobenzidine	ND	830	ug/kg						
2,4-Dichlorophenol	ND	330	ug/kg						
Diethyl phthalate	ND	330	ug/kg						
2,4-Dimethylphenol	ND	330	ug/kg						
Dimethyl phthalate	ND	330	ug/kg						

Del Mar Analytical, Irvine
Amanda Cordova
Project Manager



Geosyntec Consultants/Project Navigator - Ascon
2100 Main Street, Suite 150
Huntington Beach, CA 92648
Attention: Mike Reardon

Project ID: Ascon - Soils
SB0202/31
Report Number: INE0765

Sampled: 05/11/04
Received: 05/13/04

METHOD BLANK/QC DATA

SEMI-VOLATILE ORGANICS BY GC/MS (EPA 3545/8270C)

Analyte	Result	Reporting Limit	Units	Spike Level	Source Result	%REC %REC	%REC Limits	RPD RPD	RPD Limit	Data Qualifiers
Batch: 4E19041 Extracted: 05/19/04										
Blank Analyzed: 05/20/04 (4E19041-BLK1)										
4,6-Dinitro-2-methylphenol	ND	420	ug/kg							
2,4-Dinitrophenol	ND	420	ug/kg							
2,4-Dinitrotoluene	ND	330	ug/kg							
2,6-Dinitrotoluene	ND	330	ug/kg							
Di-n-octyl phthalate	ND	330	ug/kg							
Fluoranthene	ND	330	ug/kg							
Fluorene	ND	330	ug/kg							
Hexachlorobenzene	ND	330	ug/kg							
Hexachlorobutadiene	ND	330	ug/kg							
Hexachlorocyclopentadiene	ND	830	ug/kg							
Hexachloroethane	ND	330	ug/kg							
Indeno(1,2,3-cd)pyrene	ND	330	ug/kg							
Isophorone	ND	330	ug/kg							
2-Methylnaphthalene	ND	330	ug/kg							
2-Methylphenol	ND	330	ug/kg							
4-Methylphenol	ND	330	ug/kg							
Naphthalene	ND	330	ug/kg							
2-Nitroaniline	ND	330	ug/kg							
3-Nitroaniline	ND	330	ug/kg							
4-Nitroaniline	ND	830	ug/kg							
Nitrobenzene	ND	330	ug/kg							
2-Nitrophenol	ND	330	ug/kg							
4-Nitrophenol	ND	830	ug/kg							
n-Nitrosodiphenylamine	ND	330	ug/kg							
n-Nitroso-di-n-propylamine	ND	250	ug/kg							
Pentachlorophenol	ND	830	ug/kg							
Phenanthrene	ND	330	ug/kg							
Phenol	ND	330	ug/kg							
Pyrene	ND	330	ug/kg							
1,2,4-Trichlorobenzene	ND	330	ug/kg							
2,4,5-Trichlorophenol	ND	330	ug/kg							
2,4,6-Trichlorophenol	ND	330	ug/kg							
1,2-Diphenylhydrazine/Azobenzene	ND	330	ug/kg							
Surrogate: 2-Fluorophenol	3970		ug/kg	6670		60	25-120			
Surrogate: Phenol-d6	4450		ug/kg	6670		67	30-120			

Del Mar Analytical, Irvine
Amanda Cordova
Project Manager

Geosyntec Consultants/Project Navigator - Ascon
 2100 Main Street, Suite 150
 Huntington Beach, CA 92648
 Attention: Mike Reardon

Project ID: Ascon - Soils
 SB0202/31
 Report Number: INE0765

Sampled: 05/11/04
 Received: 05/13/04

METHOD BLANK/QC DATA

SEMI-VOLATILE ORGANICS BY GC/MS (EPA 3545/8270C)

Analyte	Result	Reporting Limit	Units	Spike Level	Source Result	%REC %REC	%REC Limits	RPD	RPD Limit	Data Qualifiers
Batch: 4E19041 Extracted: 05/19/04										
Blank Analyzed: 05/20/04 (4E19041-BLK1)										
Surrogate: 2,4,6-Tribromophenol	4670		ug/kg	6670		70	35-120			
Surrogate: Nitrobenzene-d5	2080		ug/kg	3330		62	30-120			
Surrogate: 2-Fluorobiphenyl	2500		ug/kg	3330		75	35-120			
Surrogate: Terphenyl-d14	2650		ug/kg	3330		80	35-155			
LCS Analyzed: 05/20/04 (4E19041-BS1)										
Acenaphthene	2420	330	ug/kg	3330		73	55-120			
Acenaphthylene	2790	330	ug/kg	3330		84	55-120			
Aniline	1890	420	ug/kg	3330		57	30-120			
Anthracene	2960	330	ug/kg	3330		89	55-120			
Benzidine	2130	660	ug/kg	3330		64	10-180			
Benzoic acid	1810	830	ug/kg	3330		54	30-125			
Benzo(a)anthracene	2870	330	ug/kg	3330		86	65-120			
Benzo(b)fluoranthene	3650	330	ug/kg	3330		110	65-120			
Benzo(k)fluoranthene	3350	330	ug/kg	3330		101	60-120			
Benzo(g,h,i)perylene	3890	330	ug/kg	3330		117	25-160			
Benzo(a)pyrene	3700	330	ug/kg	3330		111	60-120			
Benzyl alcohol	2300	330	ug/kg	3330		69	40-130			
Bis(2-chloroethoxy)methane	2190	330	ug/kg	3330		66	50-120			
Bis(2-chloroethyl)ether	2050	170	ug/kg	3330		62	40-120			
Bis(2-chloroisopropyl)ether	2010	330	ug/kg	3330		60	40-120			
Bis(2-ethylhexyl)phthalate	2640	330	ug/kg	3330		79	65-125			
4-Bromophenyl phenyl ether	2360	330	ug/kg	3330		71	50-125			
Butyl benzyl phthalate	2540	330	ug/kg	3330		76	65-120			
4-Chloroaniline	2130	330	ug/kg	3330		64	20-120			
2-Chloronaphthalene	2180	330	ug/kg	3330		65	50-120			
4-Chloro-3-methylphenol	2710	330	ug/kg	3330		81	50-120			
2-Chlorophenol	2000	330	ug/kg	3330		60	45-120			
4-Chlorophenyl phenyl ether	2840	330	ug/kg	3330		85	55-120			
Chrysene	2760	330	ug/kg	3330		83	60-120			
Dibenz(a,h)anthracene	4040	420	ug/kg	3330		121	25-160			
Dibenzofuran	2460	330	ug/kg	3330		74	55-120			
Di-n-butyl phthalate	3170	330	ug/kg	3330		95	60-120			
1,3-Dichlorobenzene	1510	330	ug/kg	3330		45	40-120			
1,4-Dichlorobenzene	1750	330	ug/kg	3330		53	40-120			
1,2-Dichlorobenzene	1800	330	ug/kg	3330		54	40-120			

Del Mar Analytical, Irvine
 Amanda Cordova
 Project Manager



Geosyntec Consultants/Project Navigator - Ascon
2100 Main Street, Suite 150
Huntington Beach, CA 92648
Attention: Mike Reardon

Project ID: Ascon - Soils
SB0202/31
Report Number: INE0765

Sampled: 05/11/04
Received: 05/13/04

METHOD BLANK/QC DATA

SEMI-VOLATILE ORGANICS BY GC/MS (EPA 3545/8270C)

Analyte	Result	Reporting Limit	Units	Spike Level	Source Result	%REC %REC	%REC Limits	RPD	RPD Limit	Data Qualifiers
Batch: 4E19041 Extracted: 05/19/04										
LCS Analyzed: 05/20/04 (4E19041-BS1)										
3,3-Dichlorobenzidine	2870	830	ug/kg	3330		86	20-170			
2,4-Dichlorophenol	2260	330	ug/kg	3330		68	55-120			
Diethyl phthalate	3060	330	ug/kg	3330		92	55-120			
2,4-Dimethylphenol	2040	330	ug/kg	3330		61	45-120			
Dimethyl phthalate	3010	330	ug/kg	3330		90	60-120			
4,6-Dinitro-2-methylphenol	2630	420	ug/kg	3330		79	50-120			
2,4-Dinitrophenol	2280	420	ug/kg	3330		68	25-140			
2,4-Dinitrotoluene	3010	330	ug/kg	3330		90	60-140			
2,6-Dinitrotoluene	2830	330	ug/kg	3330		85	60-125			
Di-n-octyl phthalate	2860	330	ug/kg	3330		86	60-135			
Fluoranthene	3040	330	ug/kg	3330		91	55-130			
Fluorene	2930	330	ug/kg	3330		88	55-120			
Hexachlorobenzene	2480	330	ug/kg	3330		74	45-120			
Hexachlorobutadiene	1920	330	ug/kg	3330		58	40-120			
Hexachlorocyclopentadiene	1790	830	ug/kg	3330		54	45-130			
Hexachloroethane	1700	330	ug/kg	3330		51	40-120			
Indeno(1,2,3-cd)pyrene	3940	330	ug/kg	3330		118	25-150			
Isophorone	2130	330	ug/kg	3330		64	45-120			
2-Methylnaphthalene	2530	330	ug/kg	3330		76	50-120			
2-Methylphenol	2180	330	ug/kg	3330		65	50-120			
4-Methylphenol	2320	330	ug/kg	3330		70	50-120			
Naphthalene	2340	330	ug/kg	3330		70	45-120			
2-Nitroaniline	2780	330	ug/kg	3330		83	55-130			
3-Nitroaniline	2990	330	ug/kg	3330		90	40-140			
4-Nitroaniline	3290	830	ug/kg	3330		99	40-160			
Nitrobenzene	2020	330	ug/kg	3330		61	45-120			
2-Nitrophenol	2030	330	ug/kg	3330		61	50-120			
4-Nitrophenol	2990	830	ug/kg	3330		90	45-135			
n-Nitrosodiphenylamine	2370	330	ug/kg	3330		71	55-120			
n-Nitroso-di-n-propylamine	2190	250	ug/kg	3330		66	45-120			
Pentachlorophenol	2780	830	ug/kg	3330		83	50-120			
Phenanthrene	2960	330	ug/kg	3330		89	55-120			
Phenol	2170	330	ug/kg	3330		65	45-120			
Pyrene	2970	330	ug/kg	3330		89	50-120			
1,2,4-Trichlorobenzene	1920	330	ug/kg	3330		58	45-120			

Del Mar Analytical, Irvine
Amanda Cordova
Project Manager



Geosyntec Consultants/Project Navigator - Ascon
 2100 Main Street, Suite 150
 Huntington Beach, CA 92648
 Attention: Mike Reardon

Project ID: Ascon - Soils
 SB0202/31
 Report Number: INE0765

Sampled: 05/11/04
 Received: 05/13/04

METHOD BLANK/QC DATA

SEMI-VOLATILE ORGANICS BY GC/MS (EPA 3545/8270C)

Analyte	Result	Reporting Limit	Units	Spike Level	Source Result	%REC %REC	%REC Limits	RPD	RPD Limit	Data Qualifiers
Batch: 4E19041 Extracted: 05/19/04										
LCS Analyzed: 05/20/04 (4E19041-BS1)										
2,4,5-Trichlorophenol	2710	330	ug/kg	3330		81	55-120			
2,4,6-Trichlorophenol	2470	330	ug/kg	3330		74	55-120			
1,2-Diphenylhydrazine/Azobenzene	2750	330	ug/kg	3330		83	60-120			
Surrogate: 2-Fluorophenol	3880		ug/kg	6670		58	25-120			
Surrogate: Phenol-d6	4430		ug/kg	6670		66	30-120			
Surrogate: 2,4,6-Tribromophenol	5060		ug/kg	6670		76	35-120			
Surrogate: Nitrobenzene-d5	1970		ug/kg	3330		59	30-120			
Surrogate: 2-Fluorobiphenyl	2360		ug/kg	3330		71	35-120			
Surrogate: Terphenyl-d14	2860		ug/kg	3330		86	35-155			
LCS Dup Analyzed: 05/20/04 (4E19041-BSD1)										
Acenaphthene	2310	330	ug/kg	3330		69	55-120	5	20	
Acenaphthylene	2670	330	ug/kg	3330		80	55-120	4	20	
Aniline	1580	420	ug/kg	3330		47	30-120	18	25	
Anthracene	2990	330	ug/kg	3330		90	55-120	1	20	
Benzidine	1970	660	ug/kg	3330		59	10-180	8	25	
Benzoic acid	1600	830	ug/kg	3330		48	30-125	12	25	
Benzo(a)anthracene	2810	330	ug/kg	3330		84	65-120	2	20	
Benzo(b)fluoranthene	3450	330	ug/kg	3330		104	65-120	6	20	
Benzo(k)fluoranthene	3340	330	ug/kg	3330		100	60-120	0	20	
Benzo(g,h,i)perylene	3780	330	ug/kg	3330		114	25-160	3	25	
Benzo(a)pyrene	3650	330	ug/kg	3330		110	60-120	1	20	
Benzyl alcohol	2140	330	ug/kg	3330		64	40-130	7	25	
Bis(2-chloroethoxy)methane	2150	330	ug/kg	3330		65	50-120	2	20	
Bis(2-chloroethyl)ether	2030	170	ug/kg	3330		61	40-120	1	25	
Bis(2-chloroisopropyl)ether	1930	330	ug/kg	3330		58	40-120	4	25	
Bis(2-ethylhexyl)phthalate	2600	330	ug/kg	3330		78	65-125	2	20	
4-Bromophenyl phenyl ether	2400	330	ug/kg	3330		72	50-125	2	20	
Butyl benzyl phthalate	2500	330	ug/kg	3330		75	65-120	2	20	
4-Chloroaniline	1760	330	ug/kg	3330		53	20-120	19	25	
2-Chloronaphthalene	2060	330	ug/kg	3330		62	50-120	6	20	
4-Chloro-3-methylphenol	2540	330	ug/kg	3330		76	50-120	6	20	
2-Chlorophenol	1900	330	ug/kg	3330		57	45-120	5	20	
4-Chlorophenyl phenyl ether	2810	330	ug/kg	3330		84	55-120	1	20	
Chrysene	2670	330	ug/kg	3330		80	60-120	3	20	
Dibenz(a,h)anthracene	3900	420	ug/kg	3330		117	25-160	4	25	

Del Mar Analytical, Irvine
 Amanda Cordova
 Project Manager



Geosyntec Consultants/Project Navigator - Ascon
2100 Main Street, Suite 150
Huntington Beach, CA 92648
Attention: Mike Reardon

Project ID: Ascon - Soils
SB0202/31
Report Number: INE0765

Sampled: 05/11/04
Received: 05/13/04

METHOD BLANK/QC DATA

SEMI-VOLATILE ORGANICS BY GC/MS (EPA 3545/8270C)

Analyte	Result	Reporting Limit	Units	Spike Level	Source Result	%REC %REC	%REC Limits	RPD	RPD Limit	Data Qualifiers
Batch: 4E19041 Extracted: 05/19/04										
LCS Dup Analyzed: 05/20/04 (4E19041-BSD1)										
Dibenzofuran	2360	330	ug/kg	3330		71	55-120	4	20	
Di-n-butyl phthalate	3250	330	ug/kg	3330		98	60-120	2	20	
1,3-Dichlorobenzene	1600	330	ug/kg	3330		48	40-120	6	25	
1,4-Dichlorobenzene	1740	330	ug/kg	3330		52	40-120	1	25	
1,2-Dichlorobenzene	1790	330	ug/kg	3330		54	40-120	1	20	
3,3-Dichlorobenzidine	2380	830	ug/kg	3330		71	20-170	19	25	
2,4-Dichlorophenol	2200	330	ug/kg	3330		66	55-120	3	20	
Diethyl phthalate	2960	330	ug/kg	3330		89	55-120	3	20	
2,4-Dimethylphenol	1870	330	ug/kg	3330		56	45-120	9	25	
Dimethyl phthalate	2940	330	ug/kg	3330		88	60-120	2	20	
4,6-Dinitro-2-methylphenol	2510	420	ug/kg	3330		75	50-120	5	20	
2,4-Dinitrophenol	2060	420	ug/kg	3330		62	25-140	10	25	
2,4-Dinitrotoluene	2890	330	ug/kg	3330		87	60-140	4	20	
2,6-Dinitrotoluene	2630	330	ug/kg	3330		79	60-125	7	20	
Di-n-octyl phthalate	2810	330	ug/kg	3330		84	60-135	2	20	
Fluoranthene	3080	330	ug/kg	3330		92	55-130	1	20	
Fluorene	2790	330	ug/kg	3330		84	55-120	5	20	
Hexachlorobenzene	2460	330	ug/kg	3330		74	45-120	1	20	
Hexachlorobutadiene	1890	330	ug/kg	3330		57	40-120	2	20	
Hexachlorocyclopentadiene	1780	830	ug/kg	3330		53	45-130	1	20	
Hexachloroethane	1750	330	ug/kg	3330		53	40-120	3	20	
Indeno(1,2,3-cd)pyrene	3850	330	ug/kg	3330		116	25-150	2	25	
Isophorone	2020	330	ug/kg	3330		61	45-120	5	20	
2-Methylnaphthalene	2450	330	ug/kg	3330		74	50-120	3	20	
2-Methylphenol	2060	330	ug/kg	3330		62	50-120	6	20	
4-Methylphenol	2230	330	ug/kg	3330		67	50-120	4	20	
Naphthalene	2260	330	ug/kg	3330		68	45-120	3	20	
2-Nitroaniline	2700	330	ug/kg	3330		81	55-130	3	20	
3-Nitroaniline	2550	330	ug/kg	3330		77	40-140	16	25	
4-Nitroaniline	3030	830	ug/kg	3330		91	40-160	8	20	
Nitrobenzene	1950	330	ug/kg	3330		59	45-120	4	20	
2-Nitrophenol	1950	330	ug/kg	3330		59	50-120	4	20	
4-Nitrophenol	2810	830	ug/kg	3330		84	45-135	6	25	
n-Nitrosodiphenylamine	2330	330	ug/kg	3330		70	55-120	2	20	
n-Nitroso-di-n-propylamine	2040	250	ug/kg	3330		61	45-120	7	20	

Del Mar Analytical, Irvine
Amanda Cordova
Project Manager



Geosyntec Consultants/Project Navigator - Ascon
2100 Main Street, Suite 150
Huntington Beach, CA 92648
Attention: Mike Reardon

Project ID: Ascon - Soils
SB0202/31
Report Number: INE0765

Sampled: 05/11/04
Received: 05/13/04

METHOD BLANK/QC DATA

SEMI-VOLATILE ORGANICS BY GC/MS (EPA 3545/8270C)

Analyte	Result	Reporting Limit	Units	Spike Level	Source Result	%REC	%REC Limits	RPD	RPD Limit	Data Qualifiers
Batch: 4E19041 Extracted: 05/19/04										
LCS Dup Analyzed: 05/20/04 (4E19041-BSD1)										
Pentachlorophenol	2720	830	ug/kg	3330		82	50-120	2	20	
Phenanthrene	2910	330	ug/kg	3330		87	55-120	2	20	
Phenol	2030	330	ug/kg	3330		61	45-120	7	20	
Pyrene	2930	330	ug/kg	3330		88	50-120	1	20	
1,2,4-Trichlorobenzene	1880	330	ug/kg	3330		56	45-120	2	20	
2,4,5-Trichlorophenol	2530	330	ug/kg	3330		76	55-120	7	20	
2,4,6-Trichlorophenol	2370	330	ug/kg	3330		71	55-120	4	20	
1,2-Diphenylhydrazine/Azobenzene	2690	330	ug/kg	3330		81	60-120	2	20	
Surrogate: 2-Fluorophenol	3700		ug/kg	6670		55	25-120			
Surrogate: Phenol-d6	4230		ug/kg	6670		63	30-120			
Surrogate: 2,4,6-Tribromophenol	4910		ug/kg	6670		74	35-120			
Surrogate: Nitrobenzene-d5	1890		ug/kg	3330		57	30-120			
Surrogate: 2-Fluorobiphenyl	2270		ug/kg	3330		68	35-120			
Surrogate: Terphenyl-d14	2820		ug/kg	3330		85	35-155			
Matrix Spike Analyzed: 05/20/04 (4E19041-MS1)										
Source: INE0917-02RE1										
Acenaphthene	2460	330	ug/kg	3330	ND	74	45-120			
Acenaphthylene	2780	330	ug/kg	3330	ND	83	45-120			
Aniline	1700	420	ug/kg	3330	ND	51	30-120			
Anthracene	3030	330	ug/kg	3330	ND	91	55-120			
Benzidine	523	660	ug/kg	3330	ND	16	10-180			
Benzoic acid	2160	830	ug/kg	3330	ND	65	20-125			
Benzo(a)anthracene	2870	330	ug/kg	3330	ND	86	55-120			
Benzo(b)fluoranthene	3540	330	ug/kg	3330	ND	106	65-120			
Benzo(k)fluoranthene	3390	330	ug/kg	3330	ND	102	55-120			
Benzo(g,h,i)perylene	3790	330	ug/kg	3330	ND	114	25-160			
Benzo(a)pyrene	3640	330	ug/kg	3330	ND	109	60-120			
Benzyl alcohol	2250	330	ug/kg	3330	ND	68	40-130			
Bis(2-chloroethoxy)methane	2250	330	ug/kg	3330	ND	68	45-120			
Bis(2-chloroethyl)ether	2140	170	ug/kg	3330	ND	64	40-120			
Bis(2-chloroisopropyl)ether	2060	330	ug/kg	3330	ND	62	40-120			
Bis(2-ethylhexyl)phthalate	2650	330	ug/kg	3330	ND	80	60-135			
4-Bromophenyl phenyl ether	2430	330	ug/kg	3330	ND	73	50-125			
Butyl benzyl phthalate	2640	330	ug/kg	3330	ND	79	55-150			
4-Chloroaniline	1880	330	ug/kg	3330	ND	56	20-120			
2-Chloronaphthalene	2230	330	ug/kg	3330	ND	67	55-120			

Del Mar Analytical, Irvine
Amanda Cordova
Project Manager

Geosyntec Consultants/Project Navigator - Ascon
 2100 Main Street, Suite 150
 Huntington Beach, CA 92648
 Attention: Mike Reardon

Project ID: Ascon - Soils
 SB0202/31
 Report Number: INE0765

Sampled: 05/11/04
 Received: 05/13/04

METHOD BLANK/QC DATA

SEMI-VOLATILE ORGANICS BY GC/MS (EPA 3545/8270C)

Analyte	Result	Reporting Limit	Units	Spike Level	Source Result	%REC	%REC Limits	RPD	RPD Limit	Data Qualifiers
Batch: 4E19041 Extracted: 05/19/04										
Matrix Spike Analyzed: 05/20/04 (4E19041-MS1)					Source: INE0917-02RE1					
4-Chloro-3-methylphenol	2670	330	ug/kg	3330	ND	80	45-125			
2-Chlorophenol	2050	330	ug/kg	3330	ND	62	40-120			
4-Chlorophenyl phenyl ether	2890	330	ug/kg	3330	ND	87	55-120			
Chrysene	2770	330	ug/kg	3330	ND	83	60-120			
Dibenz(a,h)anthracene	3940	420	ug/kg	3330	ND	118	25-160			
Dibenzofuran	2490	330	ug/kg	3330	ND	75	55-120			
Di-n-butyl phthalate	3210	330	ug/kg	3330	ND	96	60-120			
1,3-Dichlorobenzene	1620	330	ug/kg	3330	ND	49	35-120			
1,4-Dichlorobenzene	1860	330	ug/kg	3330	ND	56	40-120			
1,2-Dichlorobenzene	1850	330	ug/kg	3330	ND	56	40-120			
3,3-Dichlorobenzidine	2430	830	ug/kg	3330	ND	73	20-170			
2,4-Dichlorophenol	2290	330	ug/kg	3330	ND	69	40-120			
Diethyl phthalate	3070	330	ug/kg	3330	ND	92	55-120			
2,4-Dimethylphenol	2110	330	ug/kg	3330	ND	63	35-120			
Dimethyl phthalate	3040	330	ug/kg	3330	ND	91	50-120			
4,6-Dinitro-2-methylphenol	2640	420	ug/kg	3330	ND	79	40-120			
2,4-Dinitrophenol	2390	420	ug/kg	3330	ND	72	20-140			
2,4-Dinitrotoluene	3020	330	ug/kg	3330	ND	91	55-140			
2,6-Dinitrotoluene	2770	330	ug/kg	3330	ND	83	55-125			
Di-n-octyl phthalate	2930	330	ug/kg	3330	ND	88	45-140			
Fluoranthene	3070	330	ug/kg	3330	ND	92	45-130			
Fluorene	2950	330	ug/kg	3330	ND	89	55-120			
Hexachlorobenzene	2570	330	ug/kg	3330	ND	77	35-120			
Hexachlorobutadiene	1970	330	ug/kg	3330	ND	59	40-120			
Hexachlorocyclopentadiene	1780	830	ug/kg	3330	ND	53	30-145			
Hexachloroethane	1810	330	ug/kg	3330	ND	54	40-120			
Indeno(1,2,3-cd)pyrene	3820	330	ug/kg	3330	ND	115	25-150			
Isophorone	2140	330	ug/kg	3330	ND	64	40-120			
2-Methylnaphthalene	2590	330	ug/kg	3330	ND	78	40-120			
2-Methylphenol	2210	330	ug/kg	3330	ND	66	40-120			
4-Methylphenol	2300	330	ug/kg	3330	ND	69	40-120			
Naphthalene	2440	330	ug/kg	3330	ND	73	40-120			
2-Nitroaniline	2780	330	ug/kg	3330	ND	83	55-130			
3-Nitroaniline	2720	330	ug/kg	3330	ND	82	40-140			
4-Nitroaniline	3240	830	ug/kg	3330	ND	97	40-160			

Del Mar Analytical, Irvine
 Amanda Cordova
 Project Manager

Geosyntec Consultants/Project Navigator - Ascon
 2100 Main Street, Suite 150
 Huntington Beach, CA 92648
 Attention: Mike Reardon

 Project ID: Ascon - Soils
 SB0202/31
 Report Number: INE0765

 Sampled: 05/11/04
 Received: 05/13/04

METHOD BLANK/QC DATA
SEMI-VOLATILE ORGANICS BY GC/MS (EPA 3545/8270C)

Analyte	Result	Reporting Limit	Units	Spike Level	Source Result	%REC %REC	%REC Limits	RPD	RPD Limit	Data Qualifiers
Batch: 4E19041 Extracted: 05/19/04										
Matrix Spike Analyzed: 05/20/04 (4E19041-MS1)					Source: INE0917-02RE1					
Nitrobenzene	2100	330	ug/kg	3330	ND	63	45-120			
2-Nitrophenol	2100	330	ug/kg	3330	ND	63	40-120			
4-Nitrophenol	2890	830	ug/kg	3330	ND	87	35-135			
n-Nitrosodiphenylamine	2340	330	ug/kg	3330	ND	70	55-120			
n-Nitroso-di-n-propylamine	2160	250	ug/kg	3330	ND	65	40-120			
Pentachlorophenol	2780	830	ug/kg	3330	ND	83	40-120			
Phenanthrene	3000	330	ug/kg	3330	ND	90	55-120			
Phenol	2160	330	ug/kg	3330	ND	65	40-120			
Pyrene	3050	330	ug/kg	3330	ND	92	50-120			
1,2,4-Trichlorobenzene	2030	330	ug/kg	3330	ND	61	45-120			
2,4,5-Trichlorophenol	2680	330	ug/kg	3330	ND	80	55-120			
2,4,6-Trichlorophenol	2460	330	ug/kg	3330	ND	74	40-120			
1,2-Diphenylhydrazine/Azobenzene	2800	330	ug/kg	3330	ND	84	60-120			
Surrogate: 2-Fluorophenol	3920		ug/kg	6670		59	25-120			
Surrogate: Phenol-d6	4440		ug/kg	6670		67	30-120			
Surrogate: 2,4,6-Tribromophenol	5120		ug/kg	6670		77	35-120			
Surrogate: Nitrobenzene-d5	2030		ug/kg	3330		61	30-120			
Surrogate: 2-Fluorobiphenyl	2390		ug/kg	3330		72	35-120			
Surrogate: Terphenyl-d14	2850		ug/kg	3330		86	35-155			
Matrix Spike Dup Analyzed: 05/20/04 (4E19041-MSD1)					Source: INE0917-02RE1					
Acenaphthene	2380	330	ug/kg	3330	ND	71	45-120	3	20	
Acenaphthylene	2730	330	ug/kg	3330	ND	82	45-120	2	20	
Aniline	1660	420	ug/kg	3330	ND	50	30-120	2	25	
Anthracene	2990	330	ug/kg	3330	ND	90	55-120	1	20	
Benzidine	ND	660	ug/kg	3330	ND		10-180		25	M2
Benzoic acid	1950	830	ug/kg	3330	ND	59	20-125	10	25	
Benzo(a)anthracene	2900	330	ug/kg	3330	ND	87	55-120	1	20	
Benzo(b)fluoranthene	3530	330	ug/kg	3330	ND	106	65-120	0	20	
Benzo(k)fluoranthene	3440	330	ug/kg	3330	ND	103	55-120	1	20	
Benzo(g,h,i)perylene	3850	330	ug/kg	3330	ND	116	25-160	2	25	
Benzo(a)pyrene	3690	330	ug/kg	3330	ND	111	60-120	1	20	
Benzyl alcohol	2140	330	ug/kg	3330	ND	64	40-130	5	25	
Bis(2-chloroethoxy)methane	2210	330	ug/kg	3330	ND	66	45-120	2	20	
Bis(2-chloroethyl)ether	2060	170	ug/kg	3330	ND	62	40-120	4	25	
Bis(2-chloroisopropyl)ether	1980	330	ug/kg	3330	ND	59	40-120	4	25	

Del Mar Analytical, Irvine
 Amanda Cordova
 Project Manager

Geosyntec Consultants/Project Navigator - Ascon
 2100 Main Street, Suite 150
 Huntington Beach, CA 92648
 Attention: Mike Reardon

 Project ID: Ascon - Soils
 SB0202/31
 Report Number: INE0765

 Sampled: 05/11/04
 Received: 05/13/04

METHOD BLANK/QC DATA
SEMI-VOLATILE ORGANICS BY GC/MS (EPA 3545/8270C)

Analyte	Result	Reporting Limit	Units	Spike Level	Source Result	%REC	%REC Limits	RPD	RPD Limit	Data Qualifiers
Batch: 4E19041 Extracted: 05/19/04										
Matrix Spike Dup Analyzed: 05/20/04 (4E19041-MSD1)					Source: INE0917-02RE1					
Bis(2-ethylhexyl)phthalate	2660	330	ug/kg	3330	ND	80	60-135	0	20	
4-Bromophenyl phenyl ether	2440	330	ug/kg	3330	ND	73	50-125	0	20	
Butyl benzyl phthalate	2580	330	ug/kg	3330	ND	77	55-150	2	20	
4-Chloroaniline	1870	330	ug/kg	3330	ND	56	20-120	1	25	
2-Chloronaphthalene	2190	330	ug/kg	3330	ND	66	55-120	2	20	
4-Chloro-3-methylphenol	2620	330	ug/kg	3330	ND	79	45-125	2	20	
2-Chlorophenol	1980	330	ug/kg	3330	ND	59	40-120	3	20	
4-Chlorophenyl phenyl ether	2810	330	ug/kg	3330	ND	84	55-120	3	20	
Chrysene	2820	330	ug/kg	3330	ND	85	60-120	2	20	
Dibenz(a,h)anthracene	4030	420	ug/kg	3330	ND	121	25-160	2	25	
Dibenzofuran	2410	330	ug/kg	3330	ND	72	55-120	3	20	
Di-n-butyl phthalate	3210	330	ug/kg	3330	ND	96	60-120	0	20	
1,3-Dichlorobenzene	1600	330	ug/kg	3330	ND	48	35-120	1	25	
1,4-Dichlorobenzene	1670	330	ug/kg	3330	ND	50	40-120	11	25	
1,2-Dichlorobenzene	1780	330	ug/kg	3330	ND	53	40-120	4	20	
3,3-Dichlorobenzidine	2420	830	ug/kg	3330	ND	73	20-170	0	25	
2,4-Dichlorophenol	2320	330	ug/kg	3330	ND	70	40-120	1	20	
Diethyl phthalate	2980	330	ug/kg	3330	ND	89	55-120	3	20	
2,4-Dimethylphenol	2010	330	ug/kg	3330	ND	60	35-120	5	25	
Dimethyl phthalate	2960	330	ug/kg	3330	ND	89	50-120	3	20	
4,6-Dinitro-2-methylphenol	2680	420	ug/kg	3330	ND	80	40-120	2	20	
2,4-Dinitrophenol	2320	420	ug/kg	3330	ND	70	20-140	3	25	
2,4-Dinitrotoluene	2860	330	ug/kg	3330	ND	86	55-140	5	20	
2,6-Dinitrotoluene	2700	330	ug/kg	3330	ND	81	55-125	3	20	
Di-n-octyl phthalate	2980	330	ug/kg	3330	ND	89	45-140	2	20	
Fluoranthene	3150	330	ug/kg	3330	ND	95	45-130	3	20	
Fluorene	2840	330	ug/kg	3330	ND	85	55-120	4	20	
Hexachlorobenzene	2440	330	ug/kg	3330	ND	73	35-120	5	25	
Hexachlorobutadiene	1950	330	ug/kg	3330	ND	59	40-120	1	20	
Hexachlorocyclopentadiene	1860	830	ug/kg	3330	ND	56	30-145	4	30	
Hexachloroethane	1690	330	ug/kg	3330	ND	51	40-120	7	20	
Indeno(1,2,3-cd)pyrene	3920	330	ug/kg	3330	ND	118	25-150	3	25	
Isophorone	2100	330	ug/kg	3330	ND	63	40-120	2	20	
2-Methylnaphthalene	2510	330	ug/kg	3330	ND	75	40-120	3	20	
2-Methylphenol	2170	330	ug/kg	3330	ND	65	40-120	2	20	

Del Mar Analytical, Irvine
 Amanda Cordova
 Project Manager



Geosyntec Consultants/Project Navigator - Ascon
2100 Main Street, Suite 150
Huntington Beach, CA 92648
Attention: Mike Reardon

Project ID: Ascon - Soils
SB0202/31
Report Number: INE0765

Sampled: 05/11/04
Received: 05/13/04

METHOD BLANK/QC DATA

SEMI-VOLATILE ORGANICS BY GC/MS (EPA 3545/8270C)

Analyte	Result	Reporting Limit	Units	Spike Level	Source Result	%REC	%REC Limits	RPD	RPD Limit	Data Qualifiers
Batch: 4E19041 Extracted: 05/19/04										
Matrix Spike Dup Analyzed: 05/20/04 (4E19041-MSD1)					Source: INE0917-02RE1					
4-Methylphenol	2290	330	ug/kg	3330	ND	69	40-120	0	20	
Naphthalene	2370	330	ug/kg	3330	ND	71	40-120	3	20	
2-Nitroaniline	2750	330	ug/kg	3330	ND	83	55-130	1	20	
3-Nitroaniline	2700	330	ug/kg	3330	ND	81	40-140	1	25	
4-Nitroaniline	3100	830	ug/kg	3330	ND	93	40-160	4	20	
Nitrobenzene	2070	330	ug/kg	3330	ND	62	45-120	1	20	
2-Nitrophenol	2060	330	ug/kg	3330	ND	62	40-120	2	20	
4-Nitrophenol	2630	830	ug/kg	3330	ND	79	35-135	9	25	
n-Nitrosodiphenylamine	2360	330	ug/kg	3330	ND	71	55-120	1	20	
n-Nitroso-di-n-propylamine	2160	250	ug/kg	3330	ND	65	40-120	0	20	
Pentachlorophenol	2710	830	ug/kg	3330	ND	81	40-120	3	20	
Phenanthrene	2950	330	ug/kg	3330	ND	89	55-120	2	20	
Phenol	2120	330	ug/kg	3330	ND	64	40-120	2	20	
Pyrene	2970	330	ug/kg	3330	ND	89	50-120	3	20	
1,2,4-Trichlorobenzene	1970	330	ug/kg	3330	ND	59	45-120	3	20	
2,4,5-Trichlorophenol	2690	330	ug/kg	3330	ND	81	55-120	0	20	
2,4,6-Trichlorophenol	2430	330	ug/kg	3330	ND	73	40-120	1	20	
1,2-Diphenylhydrazine/Azobenzene	2710	330	ug/kg	3330	ND	81	60-120	3	20	
Surrogate: 2-Fluorophenol	3860		ug/kg	6670		58	25-120			
Surrogate: Phenol-d6	4370		ug/kg	6670		66	30-120			
Surrogate: 2,4,6-Tribromophenol	5100		ug/kg	6670		76	35-120			
Surrogate: Nitrobenzene-d5	2010		ug/kg	3330		60	30-120			
Surrogate: 2-Fluorobiphenyl	2400		ug/kg	3330		72	35-120			
Surrogate: Terphenyl-d14	2770		ug/kg	3330		83	35-155			

Del Mar Analytical, Irvine
Amanda Cordova
Project Manager



Geosyntec Consultants/Project Navigator - Ascon
 2100 Main Street, Suite 150
 Huntington Beach, CA 92648
 Attention: Mike Reardon

Project ID: Ascon - Soils
 SB0202/31
 Report Number: INE0765

Sampled: 05/11/04
 Received: 05/13/04

METHOD BLANK/QC DATA

METALS

Analyte	Result	Reporting Limit	Units	Spike Level	Source Result	%REC	%REC Limits	RPD	RPD Limit	Data Qualifiers
Batch: 4E15042 Extracted: 05/15/04										
Blank Analyzed: 05/17/04 (4E15042-BLK1)										
Antimony	ND	10	mg/kg							
Arsenic	ND	2.0	mg/kg							
Barium	ND	1.0	mg/kg							
Beryllium	ND	0.50	mg/kg							
Cadmium	ND	0.50	mg/kg							
Chromium	ND	1.0	mg/kg							
Cobalt	ND	1.0	mg/kg							
Copper	ND	2.0	mg/kg							
Lead	ND	2.0	mg/kg							
Molybdenum	ND	2.0	mg/kg							
Nickel	ND	2.0	mg/kg							
Selenium	ND	2.0	mg/kg							
Silver	ND	1.0	mg/kg							
Thallium	ND	10	mg/kg							
Vanadium	ND	1.0	mg/kg							
Zinc	ND	5.0	mg/kg							
LCS Analyzed: 05/17/04 (4E15042-BS1)										
Antimony	50.7	10	mg/kg	50.0		101	80-120			
Arsenic	51.2	2.0	mg/kg	50.0		102	80-120			
Barium	55.0	1.0	mg/kg	50.0		110	80-120			
Beryllium	54.6	0.50	mg/kg	50.0		109	80-120			
Cadmium	53.8	0.50	mg/kg	50.0		108	80-120			
Chromium	52.2	1.0	mg/kg	50.0		104	80-120			
Cobalt	54.2	1.0	mg/kg	50.0		108	80-120			
Copper	54.2	2.0	mg/kg	50.0		108	80-120			
Lead	52.4	2.0	mg/kg	50.0		105	80-120			
Molybdenum	51.4	2.0	mg/kg	50.0		103	80-120			
Nickel	53.9	2.0	mg/kg	50.0		108	80-120			
Selenium	48.0	2.0	mg/kg	50.0		96	80-120			
Silver	27.1	1.0	mg/kg	25.0		108	80-120			
Thallium	47.6	10	mg/kg	50.0		95	80-120			
Vanadium	54.5	1.0	mg/kg	50.0		109	80-120			
Zinc	52.6	5.0	mg/kg	50.0		105	80-120			

Del Mar Analytical, Irvine
 Amanda Cordova
 Project Manager



Geosyntec Consultants/Project Navigator - Ascon
 2100 Main Street, Suite 150
 Huntington Beach, CA 92648
 Attention: Mike Reardon

Project ID: Ascon - Soils
 SB0202/31
 Report Number: INE0765

Sampled: 05/11/04
 Received: 05/13/04

METHOD BLANK/QC DATA

METALS

Analyte	Result	Reporting Limit	Units	Spike Level	Source Result	%REC %REC	%REC Limits	RPD	RPD Limit	Data Qualifiers
Batch: 4E15042 Extracted: 05/15/04										
Matrix Spike Analyzed: 05/17/04 (4E15042-MS1)					Source: INE0912-01					
Antimony	25.4	10	mg/kg	50.0	ND	51	75-125			M2
Arsenic	55.2	2.0	mg/kg	50.0	3.3	104	75-125			
Barium	137	1.0	mg/kg	50.0	85	104	75-125			
Beryllium	52.8	0.50	mg/kg	50.0	0.16	105	75-125			
Cadmium	50.4	0.50	mg/kg	50.0	0.19	100	75-125			
Chromium	61.0	1.0	mg/kg	50.0	9.7	103	75-125			
Cobalt	53.0	1.0	mg/kg	50.0	2.7	101	75-125			
Copper	66.3	2.0	mg/kg	50.0	8.8	115	75-125			
Lead	55.0	2.0	mg/kg	50.0	3.7	103	75-125			
Molybdenum	50.6	2.0	mg/kg	50.0	1.1	99	75-125			
Nickel	60.3	2.0	mg/kg	50.0	6.7	107	75-125			
Selenium	47.0	2.0	mg/kg	50.0	ND	94	75-125			
Silver	27.4	1.0	mg/kg	25.0	0.16	109	75-125			
Thallium	46.8	10	mg/kg	50.0	1.3	91	75-125			
Vanadium	81.7	1.0	mg/kg	50.0	26	111	75-125			
Zinc	76.8	5.0	mg/kg	50.0	23	108	75-125			
Matrix Spike Dup Analyzed: 05/17/04 (4E15042-MSD1)					Source: INE0912-01					
Antimony	27.0	10	mg/kg	50.0	ND	54	75-125	6	20	M2
Arsenic	54.3	2.0	mg/kg	50.0	3.3	102	75-125	2	20	
Barium	122	1.0	mg/kg	50.0	85	74	75-125	12	20	M2
Beryllium	49.9	0.50	mg/kg	50.0	0.16	99	75-125	6	20	
Cadmium	48.0	0.50	mg/kg	50.0	0.19	96	75-125	5	20	
Chromium	58.9	1.0	mg/kg	50.0	9.7	98	75-125	4	20	
Cobalt	50.7	1.0	mg/kg	50.0	2.7	96	75-125	4	20	
Copper	61.4	2.0	mg/kg	50.0	8.8	105	75-125	8	20	
Lead	53.5	2.0	mg/kg	50.0	3.7	100	75-125	3	20	
Molybdenum	49.2	2.0	mg/kg	50.0	1.1	96	75-125	3	20	
Nickel	56.4	2.0	mg/kg	50.0	6.7	99	75-125	7	20	
Selenium	46.0	2.0	mg/kg	50.0	ND	92	75-125	2	20	
Silver	25.6	1.0	mg/kg	25.0	0.16	102	75-125	7	20	
Thallium	44.7	10	mg/kg	50.0	1.3	87	75-125	5	20	
Vanadium	77.7	1.0	mg/kg	50.0	26	103	75-125	5	20	
Zinc	77.4	5.0	mg/kg	50.0	23	109	75-125	1	20	

Del Mar Analytical, Irvine
 Amanda Cordova
 Project Manager



Geosyntec Consultants/Project Navigator - Ascon
 2100 Main Street, Suite 150
 Huntington Beach, CA 92648
 Attention: Mike Reardon

Project ID: Ascon - Soils
 SB0202/31
 Report Number: INE0765

Sampled: 05/11/04
 Received: 05/13/04

METHOD BLANK/QC DATA

METALS

Analyte	Result	Reporting Limit	Units	Spike Level	Source Result	%REC	%REC Limits	RPD	RPD Limit	Data Qualifiers
Batch: 4E18075 Extracted: 05/18/04										
Blank Analyzed: 05/18/04 (4E18075-BLK1)										
Mercury	ND	0.020	mg/kg							
LCS Analyzed: 05/18/04 (4E18075-BS1)										
Mercury	0.783	0.020	mg/kg	0.800		98	85-120			
Matrix Spike Analyzed: 05/18/04 (4E18075-MS1)										
					Source: INE0751-01					
Mercury	0.809	0.020	mg/kg	0.800	0.039	96	65-135			
Matrix Spike Dup Analyzed: 05/18/04 (4E18075-MSD1)										
					Source: INE0751-01					
Mercury	0.806	0.020	mg/kg	0.800	0.039	96	65-135	0	20	
Batch: 4E18081 Extracted: 05/18/04										
Blank Analyzed: 05/18/04 (4E18081-BLK1)										
Mercury	ND	0.020	mg/kg							
LCS Analyzed: 05/18/04 (4E18081-BS1)										
Mercury	0.837	0.020	mg/kg	0.800		105	85-120			
Matrix Spike Analyzed: 05/18/04 (4E18081-MS1)										
					Source: INE0897-02					
Mercury	0.853	0.020	mg/kg	0.800	0.0098	105	65-135			
Matrix Spike Dup Analyzed: 05/18/04 (4E18081-MSD1)										
					Source: INE0897-02					
Mercury	0.854	0.020	mg/kg	0.800	0.0098	106	65-135	0	20	

Del Mar Analytical, Irvine
 Amanda Cordova
 Project Manager



Geosyntec Consultants/Project Navigator - Ascon
 2100 Main Street, Suite 150
 Huntington Beach, CA 92648
 Attention: Mike Reardon

Project ID: Ascon - Soils
 SB0202/31
 Report Number: INE0765

Sampled: 05/11/04
 Received: 05/13/04

METHOD BLANK/QC DATA

INORGANICS

Analyte	Result	Reporting Limit	Units	Spike Level	Source Result	%REC %REC	%REC Limits	RPD RPD	RPD Limit	Data Qualifiers
Batch: 4E13089 Extracted: 05/13/04										
Duplicate Analyzed: 05/13/04 (4E13089-DUP1)										
pH	8.56	NA	pH Units		8.54			0	5	
Batch: 4E13092 Extracted: 05/13/04										
Duplicate Analyzed: 05/13/04 (4E13092-DUP1)										
Ignitability	Ignitable	NA	N/A		1.0			0	200	
Duplicate Analyzed: 05/13/04 (4E13092-DUP2)										
Ignitability	Ignitable	NA	N/A		1.0			0	200	
Batch: 4E19074 Extracted: 05/19/04										
Blank Analyzed: 05/20/04 (4E19074-BLK1)										
Chromium VI	ND	0.20	mg/kg							
LCS Analyzed: 05/20/04 (4E19074-BS1)										
Chromium VI	4.27	0.20	mg/kg	5.00		85	65-110			
Matrix Spike Analyzed: 05/20/04 (4E19074-MS1)										
Chromium VI	0.0190	0.20	mg/kg	5.00	0.020	0	55-110			M2
Matrix Spike Dup Analyzed: 05/20/04 (4E19074-MSD1)										
Chromium VI	0.0263	0.20	mg/kg	5.00	0.020	0	55-110	32	20	M2
Batch: 4E19094 Extracted: 05/19/04										
Blank Analyzed: 05/19/04 (4E19094-BLK1)										
Oil & Grease	ND	5.0	mg/kg							

Del Mar Analytical, Irvine
 Amanda Cordova
 Project Manager



Geosyntec Consultants/Project Navigator - Ascon
2100 Main Street, Suite 150
Huntington Beach, CA 92648
Attention: Mike Reardon

Project ID: Ascon - Soils
SB0202/31
Report Number: INE0765

Sampled: 05/11/04
Received: 05/13/04

METHOD BLANK/QC DATA

INORGANICS

Analyte	Result	Reporting Limit	Units	Spike Level	Source Result	%REC %REC	%REC Limits	RPD	RPD Limit	Data Qualifiers
Batch: 4E19094 Extracted: 05/19/04										
LCS Analyzed: 05/19/04 (4E19094-BS1)										
Oil & Grease	17.3	5.0	mg/kg	20.0		86	55-130			
Matrix Spike Analyzed: 05/19/04 (4E19094-MS1)										
Oil & Grease	1520	50	mg/kg	20.0	1600	-400	35-130			M-HA
Matrix Spike Dup Analyzed: 05/19/04 (4E19094-MSD1)										
Oil & Grease	1450	50	mg/kg	20.0	1600	-750	35-130	5	25	M-HA

Del Mar Analytical, Irvine
Amanda Cordova
Project Manager

Geosyntec Consultants/Project Navigator - Ascon
 2100 Main Street, Suite 150
 Huntington Beach, CA 92648
 Attention: Mike Reardon

Project ID: Ascon - Soils
 SB0202/31
 Report Number: INE0765

Sampled: 05/11/04
 Received: 05/13/04

METHOD BLANK/QC DATA

Organochlorine Pesticides by EPA Method 8081A

Analyte	Result	Reporting Limit	Units	Spike Level	Source Result	%REC %REC	%REC Limits	RPD RPD	RPD Limit	Data Qualifiers
Batch: 4E19004 Extracted: 05/18/04										
Blank Analyzed: 05/19/04 (4E19004-BLK1)										
Aldrin	ND	1.0	ug/kg							C-06
alpha-BHC	ND	1.0	ug/kg							
beta-BHC	ND	1.0	ug/kg							
delta-BHC	ND	1.0	ug/kg							
gamma-BHC (Lindane)	ND	1.0	ug/kg							
Chlordane (tech)	ND	20	ug/kg							
4,4'-DDD	ND	6.0	ug/kg							
4,4'-DDE	ND	2.0	ug/kg							
4,4'-DDT	ND	6.0	ug/kg							
Dieldrin	ND	2.0	ug/kg							
Endosulfan I	ND	2.0	ug/kg							
Endosulfan II	ND	2.0	ug/kg							
Endosulfan sulfate	ND	6.0	ug/kg							
Endrin	ND	2.0	ug/kg							
Endrin aldehyde	ND	6.0	ug/kg							
Endrin ketone	ND	6.0	ug/kg							
Heptachlor	ND	1.0	ug/kg							
Heptachlor epoxide	ND	1.0	ug/kg							
Methoxychlor	ND	20	ug/kg							
Toxaphene	ND	80	ug/kg							
Surrogate: Tetrachloro-m-xylene	10.9		ug/kg	16.7		65	66-116			S02
Surrogate: Decachlorobiphenyl	19.0		ug/kg	33.3		57	42-153			
LCS Analyzed: 05/19/04 (4E19004-BS1)										
Aldrin	2.18	1.0	ug/kg	3.33		66	58-112			
alpha-BHC	2.41	1.0	ug/kg	3.33		72	66-107			
beta-BHC	2.33	1.0	ug/kg	3.33		70	53-131			
delta-BHC	2.59	1.0	ug/kg	3.33		78	62-126			
gamma-BHC (Lindane)	1.97	1.0	ug/kg	3.33		59	46-123			
4,4'-DDD	18.8	6.0	ug/kg	20.0		94	57-131			
4,4'-DDE	4.35	2.0	ug/kg	6.67		65	62-113			
4,4'-DDT	8.03	6.0	ug/kg	20.0		40	36-146			
Dieldrin	4.86	2.0	ug/kg	6.67		73	62-119			
Endosulfan I	4.75	2.0	ug/kg	6.67		71	56-109			
Endosulfan II	4.08	2.0	ug/kg	6.67		61	53-125			
Endosulfan sulfate	8.58	6.0	ug/kg	20.0		43	61-141			QC02

Del Mar Analytical, Irvine
 Amanda Cordova
 Project Manager

Geosyntec Consultants/Project Navigator - Ascon
 2100 Main Street, Suite 150
 Huntington Beach, CA 92648
 Attention: Mike Reardon

 Project ID: Ascon - Soils
 SB0202/31
 Report Number: INE0765

 Sampled: 05/11/04
 Received: 05/13/04

METHOD BLANK/QC DATA
Organochlorine Pesticides by EPA Method 8081A

Analyte	Result	Reporting Limit	Units	Spike Level	Source Result	%REC %REC	%REC Limits	RPD	RPD Limit	Data Qualifiers
Batch: 4E19004 Extracted: 05/18/04										
LCS Analyzed: 05/19/04 (4E19004-BS1)										
Endrin	4.76	2.0	ug/kg	6.67		71	63-119			C-06
Endrin aldehyde	14.5	6.0	ug/kg	20.0		73	53-132			
Endrin ketone	12.5	6.0	ug/kg	20.0		63	51-144			
Heptachlor	2.18	1.0	ug/kg	3.33		66	56-121			
Heptachlor epoxide	2.46	1.0	ug/kg	3.33		74	66-115			
Methoxychlor	3.70	20	ug/kg	13.3		28	17-165			
Surrogate: Tetrachloro- <i>m</i> -xylene	9.12		ug/kg	13.3		69	66-116			
Surrogate: Decachlorobiphenyl	15.5		ug/kg	26.7		58	42-153			
LCS Dup Analyzed: 05/19/04 (4E19004-BSD1)										
Aldrin	2.19	1.0	ug/kg	3.33		66	58-112	0	20	C-06
alpha-BHC	2.40	1.0	ug/kg	3.33		72	66-107	0	20	
beta-BHC	2.37	1.0	ug/kg	3.33		71	53-131	2	20	
delta-BHC	2.62	1.0	ug/kg	3.33		79	62-126	1	20	
gamma-BHC (Lindane)	1.92	1.0	ug/kg	3.33		58	46-123	3	20	
4,4'-DDD	19.2	6.0	ug/kg	20.0		96	57-131	2	20	
4,4'-DDE	4.43	2.0	ug/kg	6.67		66	62-113	2	20	
4,4'-DDT	8.09	6.0	ug/kg	20.0		40	36-146	1	20	
Dieldrin	4.96	2.0	ug/kg	6.67		74	62-119	2	20	
Endosulfan I	4.83	2.0	ug/kg	6.67		72	56-109	2	20	
Endosulfan II	4.14	2.0	ug/kg	6.67		62	53-125	1	20	
Endosulfan sulfate	8.78	6.0	ug/kg	20.0		44	61-141	2	20	QC02
Endrin	4.83	2.0	ug/kg	6.67		72	63-119	1	20	
Endrin aldehyde	14.7	6.0	ug/kg	20.0		74	53-132	1	20	
Endrin ketone	12.7	6.0	ug/kg	20.0		64	51-144	2	20	
Heptachlor	2.11	1.0	ug/kg	3.33		63	56-121	3	20	
Heptachlor epoxide	2.55	1.0	ug/kg	3.33		77	66-115	4	20	
Methoxychlor	3.32	20	ug/kg	13.3		25	17-165	11	20	
Surrogate: Tetrachloro- <i>m</i> -xylene	9.24		ug/kg	13.3		70	66-116			
Surrogate: Decachlorobiphenyl	16.8		ug/kg	26.7		63	42-153			

Del Mar Analytical, Irvine
 Amanda Cordova
 Project Manager

Geosyntec Consultants/Project Navigator - Ascon
 2100 Main Street, Suite 150
 Huntington Beach, CA 92648
 Attention: Mike Reardon

Project ID: Ascon - Soils
 SB0202/31
 Report Number: INE0765

Sampled: 05/11/04
 Received: 05/13/04

METHOD BLANK/QC DATA

Polychlorinated Biphenyls (as Aroclors) by EPA Method 8082

Analyte	Result	Reporting Limit	Units	Spike Level	Source Result	%REC %REC	Limit	RPD	RPD Limit	Data Qualifiers
Batch: 4E18024 Extracted: 05/18/04										
Blank Analyzed: 05/19/04 (4E18024-BLK1)										
PCB-1016	ND	20	ug/kg							
PCB-1221	ND	80	ug/kg							
PCB-1232	ND	20	ug/kg							
PCB-1242	ND	20	ug/kg							
PCB-1248	ND	20	ug/kg							
PCB-1254	ND	20	ug/kg							
PCB-1260	ND	20	ug/kg							
PCB-1268	ND	20	ug/kg							
Surrogate: Tetrachloro-m-xylene	18.0		ug/kg	16.7		108	23-151			
Surrogate: Decachlorobiphenyl	39.5		ug/kg	33.3		119	26-142			
LCS Analyzed: 05/19/04 (4E18024-BS1)										
PCB-1260	89.7	20	ug/kg	83.3		108	47-126			
Surrogate: Tetrachloro-m-xylene	18.2		ug/kg	16.7		109	23-151			
Surrogate: Decachlorobiphenyl	37.9		ug/kg	33.3		114	26-142			
Matrix Spike Analyzed: 05/19/04 (4E18024-MS1)					Source: MNE0280-01					
PCB-1260	83.2	20	ug/kg	83.3	ND	100	47-126			
Surrogate: Tetrachloro-m-xylene	16.0		ug/kg	16.7		96	23-151			
Surrogate: Decachlorobiphenyl	34.4		ug/kg	33.3		103	26-142			
Matrix Spike Dup Analyzed: 05/19/04 (4E18024-MSD1)					Source: MNE0280-01					
PCB-1260	70.4	20	ug/kg	83.3	ND	85	47-126	17	37	
Surrogate: Tetrachloro-m-xylene	13.1		ug/kg	16.7		78	23-151			
Surrogate: Decachlorobiphenyl	27.7		ug/kg	33.3		83	26-142			

Del Mar Analytical, Irvine
 Amanda Cordova
 Project Manager



Geosyntec Consultants/Project Navigator - Ascon
2100 Main Street, Suite 150
Huntington Beach, CA 92648
Attention: Mike Reardon

Project ID: Ascon - Soils
SB0202/31
Report Number: INE0765

Sampled: 05/11/04
Received: 05/13/04

DATA QUALIFIERS AND DEFINITIONS

- B** Analyte was detected in the associated Method Blank.
- B-1** Analyte was detected in the associated method blank. Analyte concentration in the sample is greater than 10x the concentration found in the method blank.
- C-06** To reduce matrix interference, the sample extract has undergone TBA (sulfur) clean-up, method 3660B.
- CF1** Primary and confirmation results varied by greater than 40% RPD. The results may still be useful for their intended purpose.
- M2** The MS and/or MSD were below the acceptance limits due to sample matrix interference. See Blank Spike (LCS).
- M-HA** Due to high levels of analyte in the sample, the MS/MSD calculation does not provide useful spike recovery information. See Blank Spike (LCS).
- QC02** The percent recovery was below the control limits. The sample results may still be useful for their intended purpose.
- R** The RPD exceeded the method control limit due to sample matrix effects. The individual analyte QA/QC recoveries, however, were within acceptance limits.
- R-05** The sample was diluted due to the presence of high levels of non-target analytes resulting in elevated reporting limits.
- R-3** The RPD exceeded the method control limit due to sample matrix effects.
- RL-2** Reporting limit raised due to high concentrations of hydrocarbons.
- S02** The surrogate recovery was below control limits. The result may still be useful for its intended purpose.
- S07** The surrogate recovery for this sample cannot be accurately quantified due to interference from coeluting organic compounds present in the sample extract.
- S08** The surrogate recovery for this sample is not available due to sample dilution which was required by high analyte concentration and/or matrix interference.
- Z3** The sample required a dilution due to the nature of the sample matrix. Because of this dilution, the surrogate spike concentration in the sample was reduced to a level where the recovery calculation does not provide useful information.
- ND** Analyte NOT DETECTED at or above the reporting limit or MDL, if MDL is specified.
- RPD** Relative Percent Difference

ADDITIONAL COMMENTS

For 1,2-Diphenylhydrazine:

The result for 1,2-Diphenylhydrazine is based upon the reading of its breakdown product, Azobenzene.

For Extractable Fuel Hydrocarbons (EFH, DRO, ORO) :

Unless otherwise noted, Extractable Fuel Hydrocarbons (EFH, DRO, ORO) are quantitated against a Diesel Fuel Standard.

Del Mar Analytical, Irvine
Amanda Cordova
Project Manager



Geosyntec Consultants/Project Navigator - Ascon
 2100 Main Street, Suite 150
 Huntington Beach, CA 92648
 Attention: Mike Reardon

Project ID: Ascon - Soils
 SB0202/31
 Report Number: INE0765

Sampled: 05/11/04
 Received: 05/13/04

Certification Summary

Del Mar Analytical, Irvine

Method	Matrix	NELAP	CA
EPA 413.2 MOD.	Soil	N/A	N/A
EPA 418.1	Soil	X	X
EPA 6010B	Soil	X	X
EPA 7199	Soil	X	X
EPA 7471A	Soil	X	X
EPA 8015B MOD.	Soil	N/A	N/A
EPA 8260B	Soil-extr	X	X
EPA 8270C	Soil	X	X
EPA 9045C	Soil	X	X
SW846 7.1.2	Solid		
SW846 7.3.2.1	Soil		X

NV and NELAP provide analyte specific accreditations. Analyte specific information for Del Mar Analytical may be obtained by contacting the laboratory or visiting our website at www.dmalabs.com.

Subcontracted Laboratories

Calscience-SUB CA ELAP Cert #1230

7440 Lincoln Way - Garden Grove, CA 92841

Analysis Performed: Organic Lead

Samples: INE0765-01, INE0765-02, INE0765-03

Sequoia Analytical, Morgan Hill CA ELAP Cert #1210 and AZ DHS Licence #01117CA

885 Jarvis Drive - Morgan Hill, CA 95037

Method Performed: EPA 8081A

Samples: INE0765-01, INE0765-02, INE0765-03

Method Performed: EPA 8082

Samples: INE0765-01, INE0765-02, INE0765-03

Del Mar Analytical, Irvine

Amanda Cordova

Project Manager



2852 Alton Ave., Irvine CA 92606 (949) 261-1022 FAX (949) 261-1228
1014 E. Cooley Dr., Suite A, Colton, CA 92324 (909) 370-4667 FAX (949) 370-1046
9484 Chesapeake Dr., Suite 805, San Diego, CA 92123 (858) 505-8596 FAX (858) 505-9689
9830 South 51st St., Suite B-120, Phoenix, AZ 85044 (480) 785-0043 FAX (480) 785-0851
2520 E. Sunset Rd. #3, Las Vegas, NV 89120 (702) 798-3620 FAX (702) 798-3621

June 9, 2004

Geosyntec Consultants/Project Navigator - Ascon
2100 Main Street, Suite 150
Huntington Beach, CA 92648

Attention: Mike Reardon

Subject: Ascon-Soils
Sampled: 05/11/04
Del Mar Analytical Report Number: INE0765

Dear Mr. Reardon:

Calscience Laboratories performed the Organic Lead Analysis by Method DHS LUFT for the project referenced above. Please use the following cross-reference table when reviewing your results.

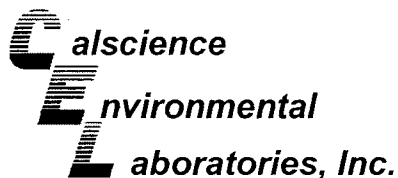
Geosyntec ID	Del Mar – Irvine ID	Calscience ID
PNL-BA08-Stockpile	INE0765-01	04-05-1717-1
PNL-BA07-Stockpile	INE0765-02	04-05-1717-2
PNL-BA01-Stockpile	INE0765-03	04-05-1717-3

The final report from the subcontract laboratory is attached. Should you have any questions or comments please contact me at (949) 261-1022, extension 229.

Sincerely,
DEL MAR ANALYTICAL

Amanda Cordova
Project Manager

Enclosure



June 07, 2004

Amanda Cordova
Del Mar Analytical
2852 Alton Parkway
Irvine, CA 92606-5104

Subject: **Calscience Work Order No.: 04-05-1717**
Client Reference: INE0765

Dear Client:

Enclosed is an analytical report for the above-referenced project. The samples included in this report were received 5/29/2004 and analyzed in accordance with the attached chain-of-custody.

Unless otherwise noted, all analytical testing was accomplished in accordance with the guidelines established in our Quality Assurance Program Manual, applicable standard operating procedures, and other related documentation. The original report of any subcontracted analysis is provided herein, and follows the standard Calscience data package. The results in this analytical report are limited to the samples tested and any reproduction thereof must be made in its entirety.

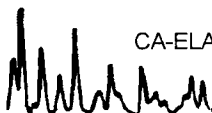
If you have any questions regarding this report, please do not hesitate to contact the undersigned.

Sincerely,

A handwritten signature in black ink, appearing to read 'S. Lane'.

Calscience Environmental
Laboratories, Inc.
Steven L. Lane
Laboratory Director

Michael J. Crisostomo
Quality Assurance Manager





Del Mar Analytical
 2852 Alton Parkway
 Irvine, CA 92606-5104

Date Received: 05/29/04
 Work Order No: 04-05-1717
 Preparation: DHS LUFT
 Method: DHS LUFT

Project: INE0765

Page 1 of 1

Client Sample Number	Lab Sample Number	Date Collected	Matrix	Date Prepared	Date Analyzed	QC Batch ID
INE0765-01	04-05-1717-1	05/11/04	Solid	06/03/04	06/03/04	040603L07

Parameter	Result	RL	DF	Qual	Units
Organic Lead	ND	1.00	1		mg/kg

INE0765-02	04-05-1717-2	05/11/04	Solid	06/03/04	06/03/04	040603L07
------------	--------------	----------	-------	----------	----------	-----------

Parameter	Result	RL	DF	Qual	Units
Organic Lead	ND	1.00	1		mg/kg

INE0765-03	04-05-1717-3	05/11/04	Solid	06/03/04	06/03/04	040603L07
------------	--------------	----------	-------	----------	----------	-----------

Parameter	Result	RL	DF	Qual	Units
Organic Lead	ND	1.00	1		mg/kg

Method Blank	099-10-020-202	N/A	Solid	06/03/04	06/03/04	040603L07
--------------	----------------	-----	-------	----------	----------	-----------

Parameter	Result	RL	DF	Qual	Units
Organic Lead	ND	1.00	1		mg/kg

RL - Reporting Limit , DF - Dilution Factor , Qual - Qualifiers



Del Mar Analytical
 2852 Alton Parkway
 Irvine, CA 92606-5104

Date Received: 05/29/04
 Work Order No: 04-05-1717
 Preparation: DHS LUFT
 Method: DHS LUFT

Project: INE0765

Quality Control Sample ID	Matrix	Instrument	Date Prepared	Date Analyzed	MS/MSD Batch Number
04-05-1718-1	Solid	FLAA	06/03/04	06/03/04	040603S07

Parameter	MS %REC	MSD %REC	%REC CL	RPD	RPD CL	Qualifiers
Organic Lead	92	92	50-130	0	0-20	

RPD - Relative Percent Difference , CL - Control Limit



Environmental Quality Control - Laboratory Control Sample
Laboratories, Inc.



Del Mar Analytical
 2852 Alton Parkway
 Irvine, CA 92606-5104

Date Received: N/A
 Work Order No: 04-05-1717
 Preparation: DHS LUFT
 Method: DHS LUFT

Project: INE0765

Quality Control Sample ID	Matrix	Instrument	Date Analyzed	Lab File ID	LCS Batch Number
099-10-020-202	Solid	FLAA	06/03/04	NONE	040603L07

Parameter	Conc Added	Conc Recovered	LCS %Rec	%Rec CL	Qualifiers
Organic Lead	25.0	23.8	95	50-130	

RPD - Relative Percent Difference , CL - Control Limit



Work Order Number: 04-05-1717

<u>Qualifier</u>	<u>Definition</u>
*	See applicable analysis comment.
1	Surrogate compound recovery was out of control due to a required sample dilution, therefore, the sample data was reported without further clarification.
2	Surrogate compound recovery was out of control due to matrix interference. The associated method blank surrogate spike compound was in control and, therefore, the sample data was reported without further clarification.
3	Recovery of the Matrix Spike or Matrix Spike Duplicate compound was out of control due to matrix interference. The associated LCS and/or LCSD was in control and, therefore, the sample data was reported without further clarification.
4	The MS/MSD RPD was out of control due to matrix interference. The LCS/LCSD RPD was in control and, therefore, the sample data was reported without further clarification.
5	The PDS/PDSD associated with this batch of samples was out of control due to a matrix interference effect. The associated batch LCS/LCSD was in control and, hence, the associated sample data was reported with no further corrective action required.
A	Result is the average of all dilutions, as defined by the method.
B	Analyte was present in the associated method blank.
C	Analyte presence was not confirmed on primary column.
D	The analyte concentration was reported from analysis of the diluted sample.
E	Concentration exceeds the calibration range.
H	Sample received and/or analyzed past the recommended holding time.
J	Analyte was detected at a concentration below the reporting limit and above the laboratory method detection limit. Reported value is estimated.
N	Nontarget Analyte.
ND	Parameter not detected at the indicated reporting limit.
Q	Spike recovery and RPD control limits do not apply resulting from the parameter concentration in the sample exceeding the spike concentration by a factor of four or greater.
U	Undetected at the laboratory method detection limit.
X	% Recovery and/or RPD out-of-range.
Z	Analyte presence was not confirmed by second column or GC/MS analysis.



2852 Alton Ave., Irvine, CA 92626 Ph (949) 261-1022 Fax (949) 261-1228
 1014 E. Cooley Dr., Suite A, Colton, CA 92324 Ph (909) 370-4667 Fax (909) 370-1046
 9484 Chesapeake Drive, Suite 805, San Diego, CA 92123 Ph (619) 505-9596 Fax (619) 505-9689
 9830 South 51st Street, Suite B-120, Phoenix, AZ 85044 Ph (480) 785-0043 Fax (480) 785-0851
 2520 E. Sunset Rd., Suite #3, Las Vegas, NV 89120 Ph (702) 798-3620 Fax (702) 798-3621

SUBCONTRACT ORDER - PROJECT # INE0765

<p align="center">SENDING LABORATORY:</p> <p>Del Mar Analytical, Irvine 2852 Alton Parkway Irvine, CA 92606 Phone: (949) 261-1022 Fax: (949) 261-1228 Project Manager: Amanda Cordova</p>	<p align="center">RECEIVING LABORATORY:</p> <p>Calscience-SUB 7440 Lincoln Way Garden Grove, CA 92841 Phone :714-895-5494 Fax: 714-894-7501</p> <p style="font-size: 2em; font-family: cursive;">04-05-1717</p>
---	--

Work Order Comments: ~~Please charge 800 for 8001. Please include cleanup fees.~~

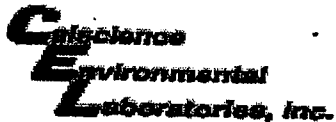
Standard TAT is requested unless specific due date is requested => Due Date: _____ Initials: _____

Analysis	Expiration	Comments
Sample ID: INE0765-01 Soil Organic Lead-Out	Expired: 05/25/04 11:29 Sampled: 05/11/04 11:29	Sub to Calscience
Containers Supplied: 8 oz Jar (INE0765-01A)		
Sample ID: INE0765-02 Soil Organic Lead-Out	Expired: 05/25/04 15:39 Sampled: 05/11/04 15:39	Sub to Calscience
Containers Supplied: 8 oz Jar (INE0765-02A)		
Sample ID: INE0765-03 Soil Organic Lead-Out	Expired: 05/25/04 15:55 Sampled: 05/11/04 15:55	Sub to Calscience
Containers Supplied: 2 oz jar (INE0765-03C)		

SAMPLE INTEGRITY:

All containers intact: <input type="checkbox"/> Yes <input type="checkbox"/> No	Sample labels/COC agree: <input type="checkbox"/> Yes <input type="checkbox"/> No	Samples Received On Ice: <input type="checkbox"/> Yes <input type="checkbox"/> No
Custody Seals Present: <input type="checkbox"/> Yes <input type="checkbox"/> No	Samples Preserved Property: <input type="checkbox"/> Yes <input type="checkbox"/> No	Samples Received at (temp): _____

Released By: *[Signature]* Date: 5/29/04 Time: _____
 Received By: *[Signature]* Date: 5/29/04 Time: 12:10



WORK ORDER #: 04 - 05 - 1717

Cooler 1 of 1

SAMPLE RECEIPT FORM

CLIENT: DEL MAR ANALYTICAL

DATE: 5/29/04

TEMPERATURE - SAMPLES RECEIVED BY:

CALSCIENCE COURIER:

- Chilled, cooler with temperature blank provided.
- Chilled, cooler without temperature blank.
- Chilled and placed in cooler with wet ice.
- Ambient and placed in cooler with wet ice.
- Ambient temperature.
- °C Temperature blank.

LABORATORY (Other than Calscience Courier):

- °C Temperature blank.
- 3.7 °C IR thermometer.
- Ambient temperature.

Initial: KN

CUSTODY SEAL INTACT:

Sample(s): _____ Cooler: _____ No (Not Intact): _____ Not Applicable (N/A):

Initial: KN

SAMPLE CONDITION:

	Yes	No	N/A
Chain-Of-Custody document(s) received with samples.....	<input checked="" type="checkbox"/>	<input type="checkbox"/>	<input type="checkbox"/>
Sample container label(s) consistent with custody papers.....	<input checked="" type="checkbox"/>	<input type="checkbox"/>	<input type="checkbox"/>
Sample container(s) intact and good condition.....	<input checked="" type="checkbox"/>	<input type="checkbox"/>	<input type="checkbox"/>
Correct containers for analyses requested.....	<input checked="" type="checkbox"/>	<input type="checkbox"/>	<input type="checkbox"/>
Proper preservation noted on sample label(s).....	<input type="checkbox"/>	<input type="checkbox"/>	<input checked="" type="checkbox"/>
VOA vial(s) free of headspace.....	<input type="checkbox"/>	<input type="checkbox"/>	<input checked="" type="checkbox"/>
Tedlar bag(s) free of condensation.....	<input type="checkbox"/>	<input type="checkbox"/>	<input checked="" type="checkbox"/>

Initial: KN

COMMENTS:
